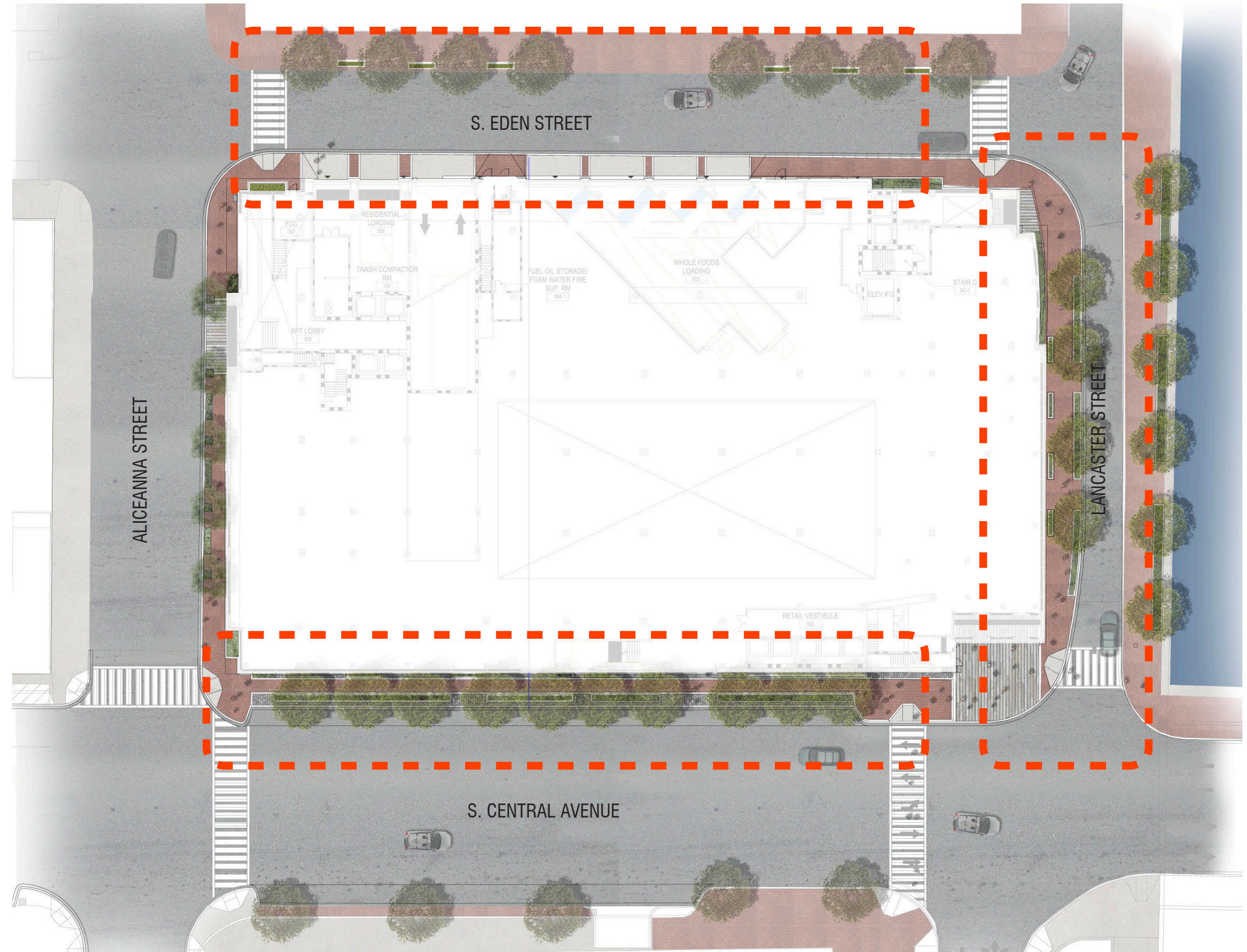
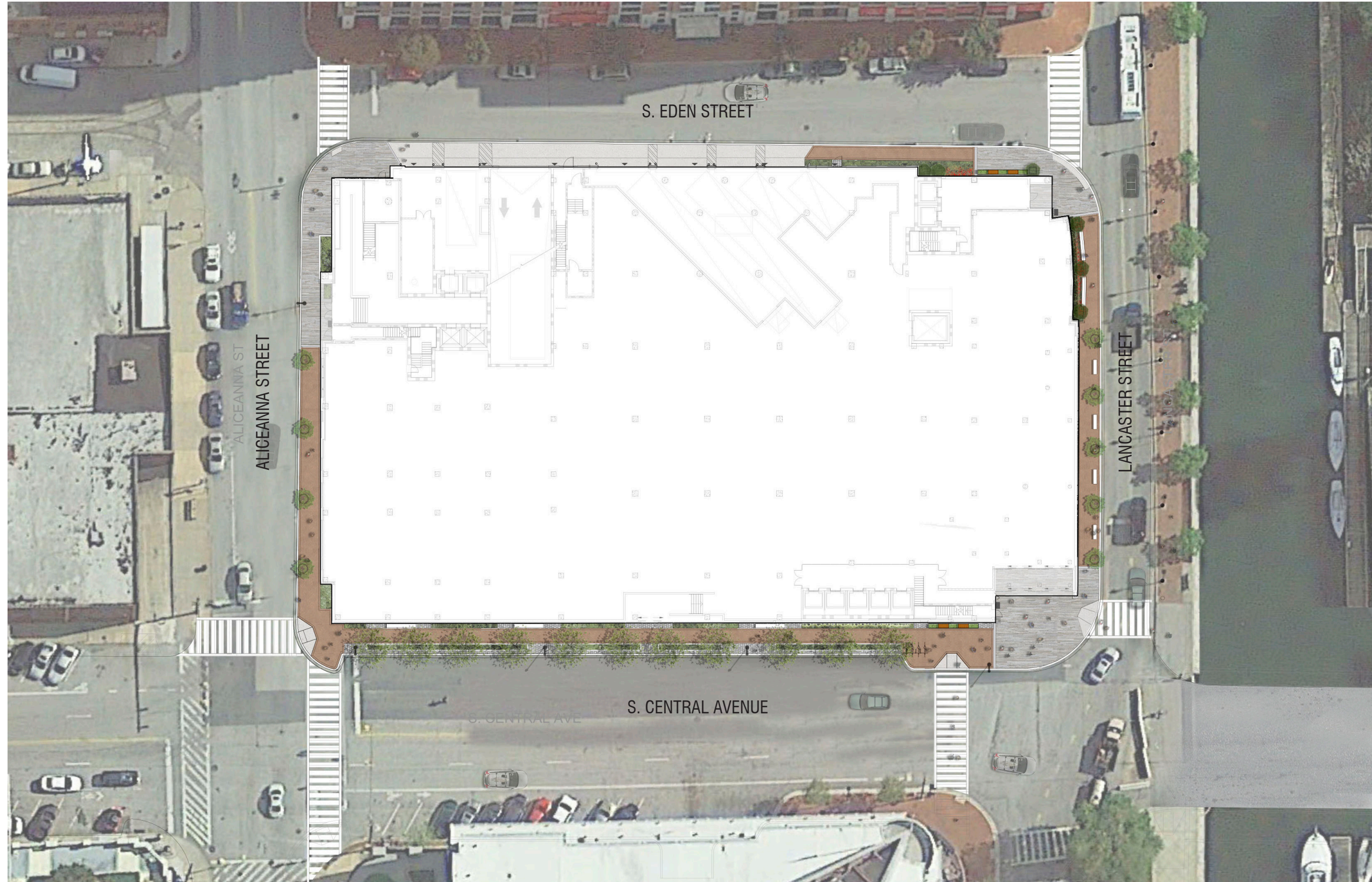


# OVERALL SITE | PREVIOUS COMMENTS

- Improve overall pedestrian experience
- **Eden Street** - improve quality and viability of pedestrian experience
- **Lancaster Street** - verify regulatory agency approval of proposed road narrowing
- **S. Central Avenue** - better connection between Art Wall and pedestrian experience



# OVERALL SITE | CURRENT REVISIONS



HARBOR EAST



HARBOR EAST  
711 S. CENTRAL AVE, BALTIMORE, MD/ BCI LOT

FEBRUARY 18, 2016  
UDARP - DESIGN DEVELOPMENT SESSION

L-2

MAHAN RYKIEL  
LANDSCAPE ARCHITECTURE  
URBAN DESIGN & PLANNING



# S. CENTRAL AVENUE

**UDARP 2:** better connection between Art Wall and pedestrian experience



HARBOR EAST



HARBOR EAST  
711 S. CENTRAL AVE, BALTIMORE, MD/ BCI LOT

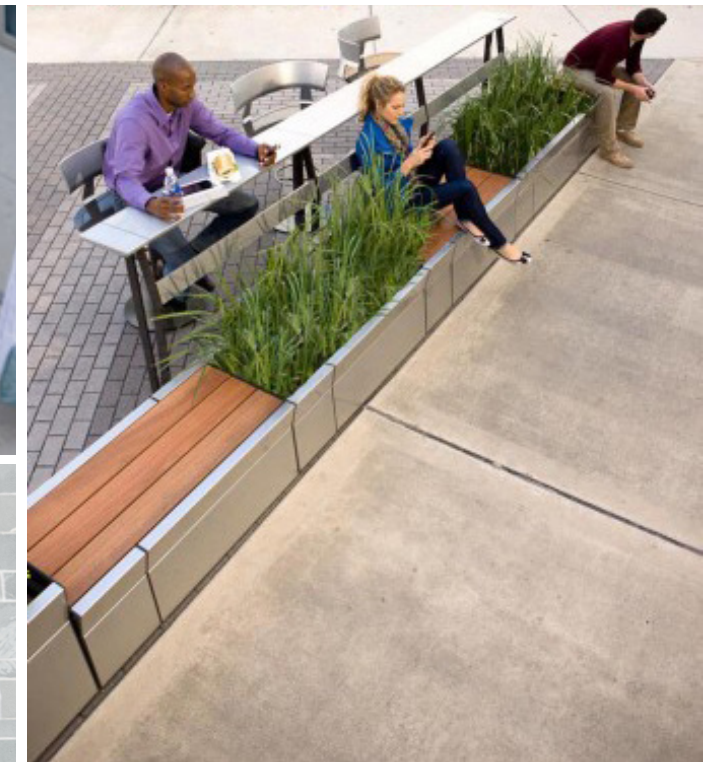
FEBRUARY 18, 2016  
UDARP - DESIGN DEVELOPMENT SESSION

L-3

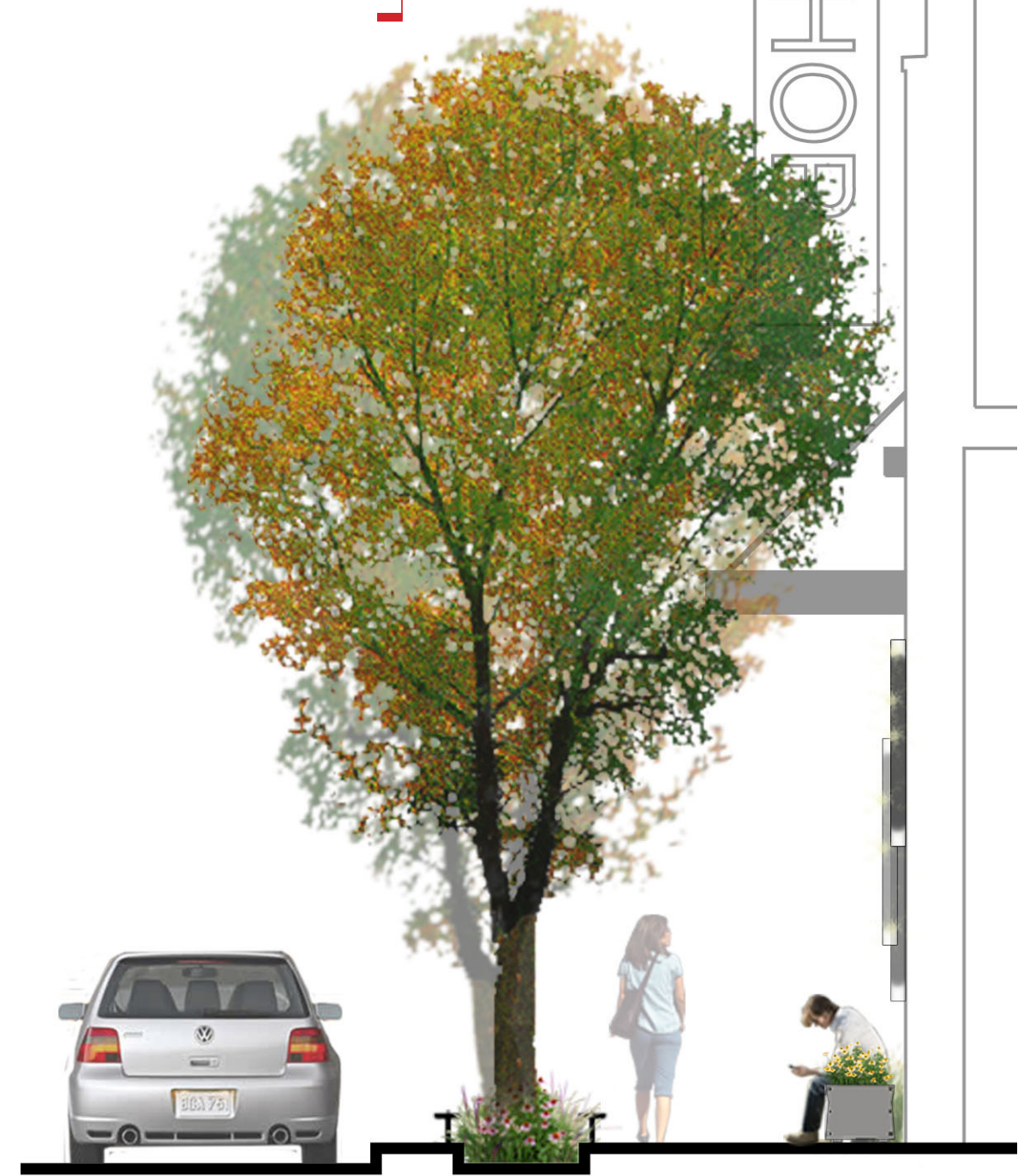
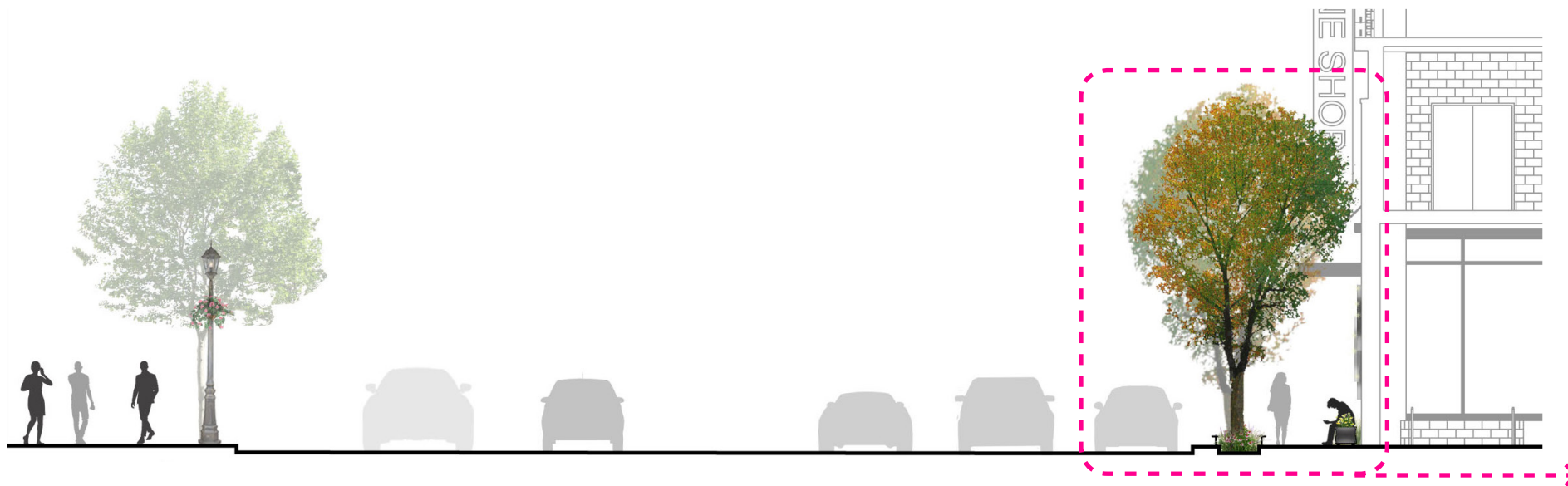
MAHAN RYKIEL  
LANDSCAPE ARCHITECTURE  
URBAN DESIGN & PLANNING



# S. CENTRAL AVE. | REVISIONS

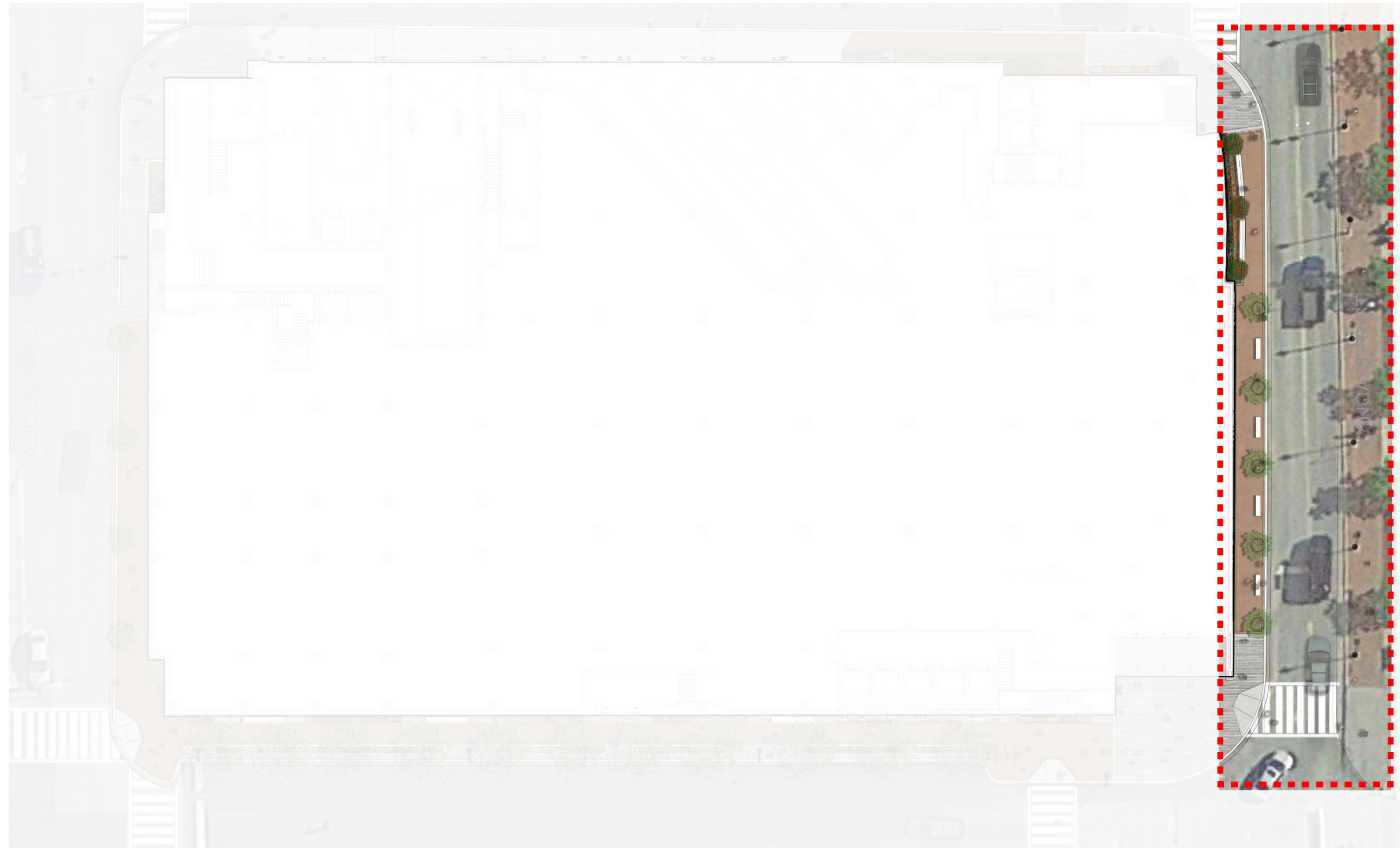


# S. CENTRAL AVE. | REVISIONS



# LANCASTER STREET

**UDARP 2:** verify regulatory agency approval of proposed road narrowing



HARBOR EAST



HARBOR EAST  
711 S. CENTRAL AVE, BALTIMORE, MD/ BCI LOT

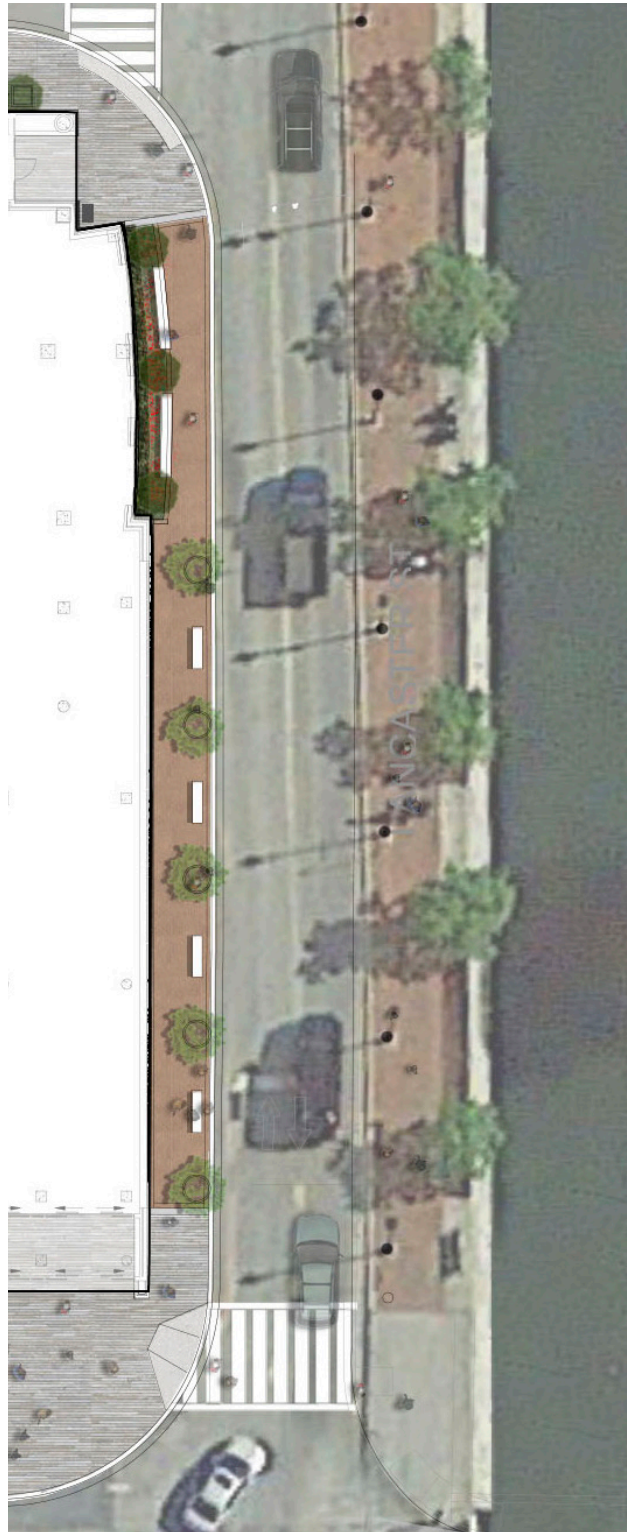
FEBRUARY 18, 2016  
UDARP - DESIGN DEVELOPMENT SESSION

L-6

MAHAN RYKIEL  
LANDSCAPE ARCHITECTURE  
URBAN DESIGN & PLANNING



# LANCASTER ST. | REVISIONS



HARBOR EAST



HARBOR EAST  
711 S. CENTRAL AVE, BALTIMORE, MD/ BCI LOT

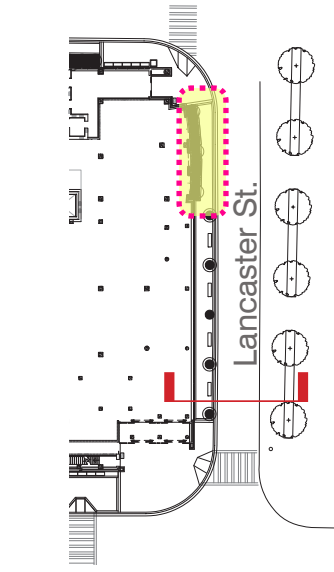
FEBRUARY 18, 2016  
UDARP - DESIGN DEVELOPMENT SESSION

L-7

MAHAN RYKIEL  
LANDSCAPE ARCHITECTURE  
URBAN DESIGN & PLANNING



# LANCASTER ST. | REVISIONS



HARBOR EAST



HARBOR EAST  
711 S. CENTRAL AVE, BALTIMORE, MD/ BCI LOT

FEBRUARY 18, 2016  
UDARP - DESIGN DEVELOPMENT SESSION

L-8

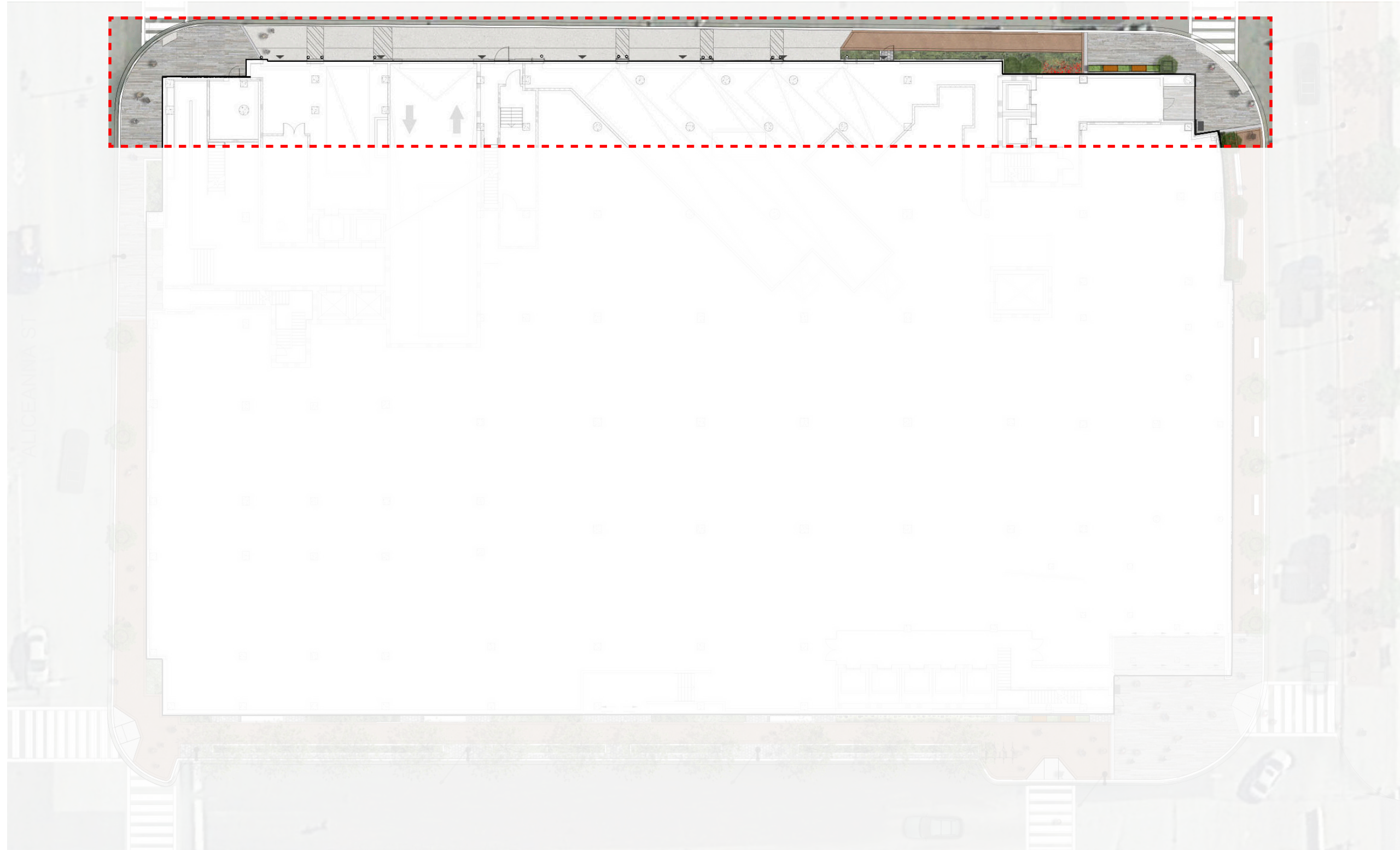
MAHAN RYKIEL  
LANDSCAPE ARCHITECTURE  
URBAN DESIGN & PLANNING





# EDEN STREET

**UDARP 2:** improve quality and viability of pedestrian experience



HARBOR EAST



HARBOR EAST  
711 S. CENTRAL AVE, BALTIMORE, MD/ BCI LOT

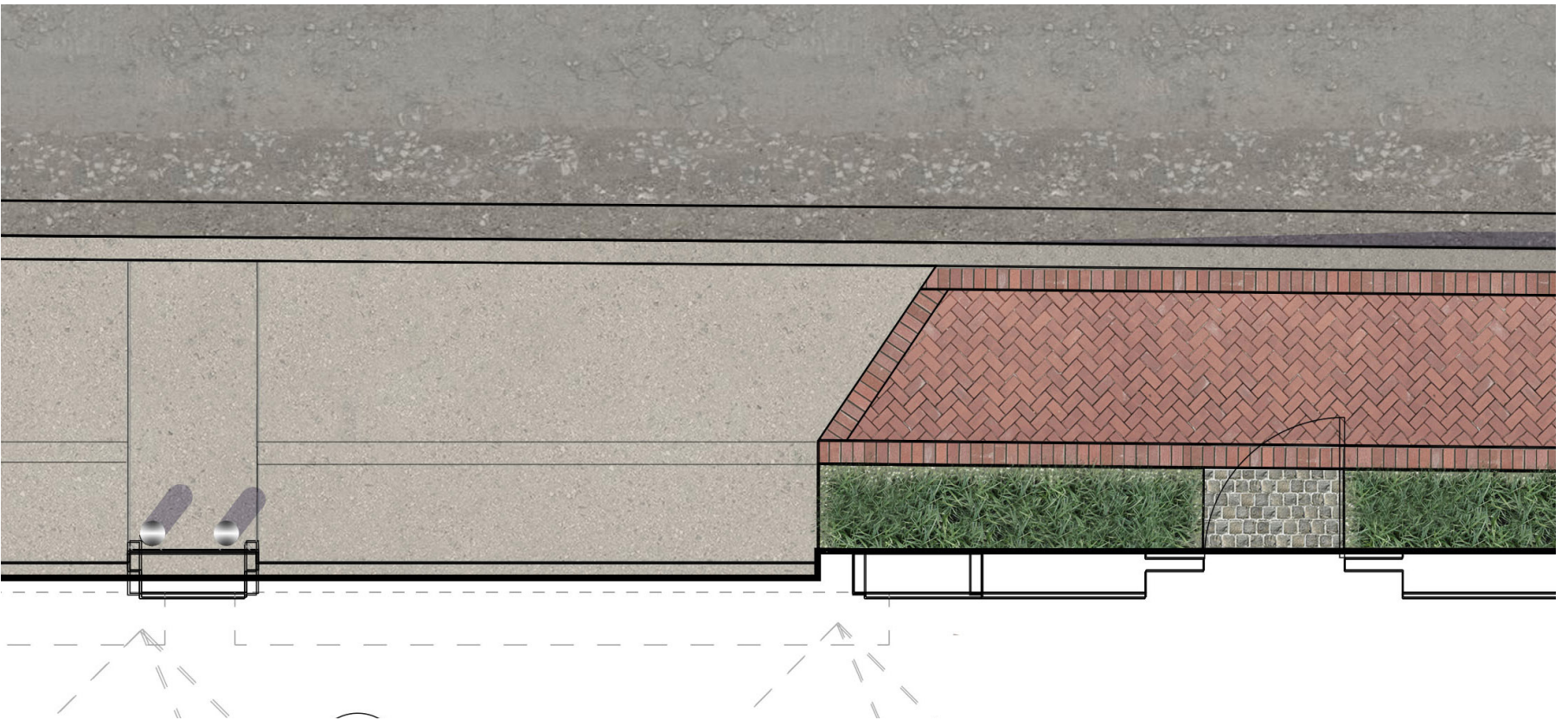
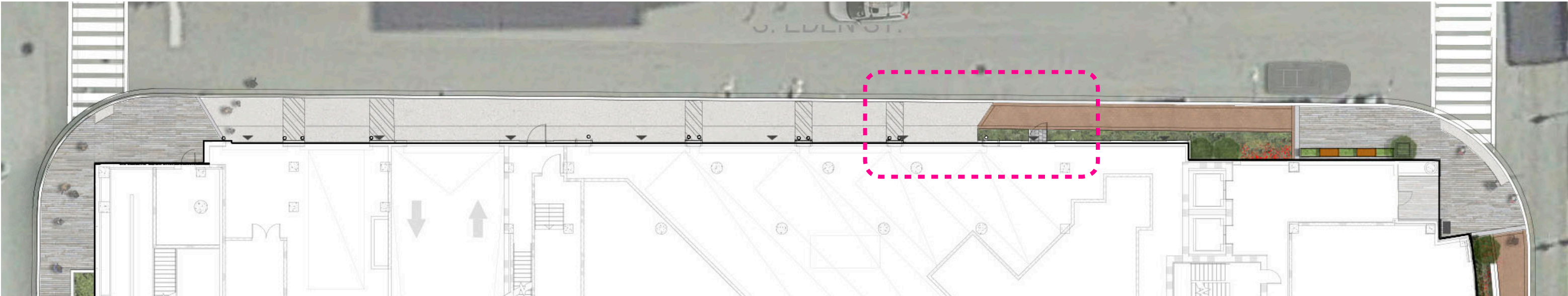
FEBRUARY 18, 2016  
UDARP - DESIGN DEVELOPMENT SESSION

L-9

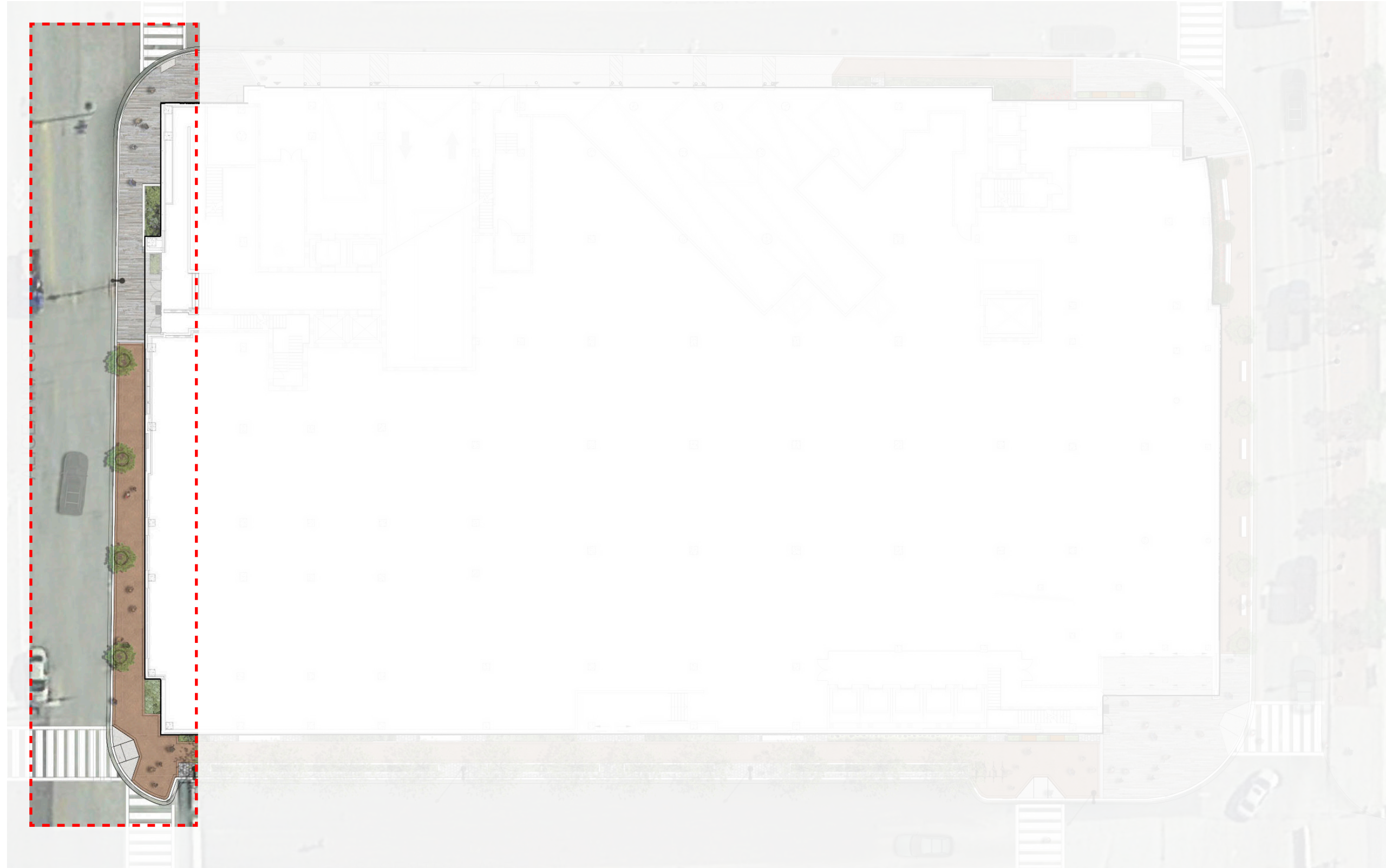
MAHAN RYKIEL  
LANDSCAPE ARCHITECTURE  
URBAN DESIGN & PLANNING



EDEN ST. | REVISIONS



# ALICEANNA STREET



HARBOR EAST



HARBOR EAST  
711 S. CENTRAL AVE, BALTIMORE, MD/ BCI LOT

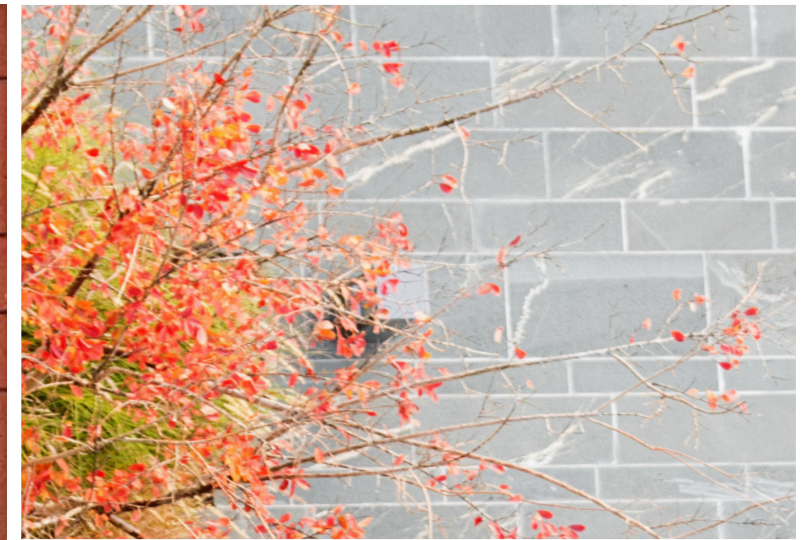
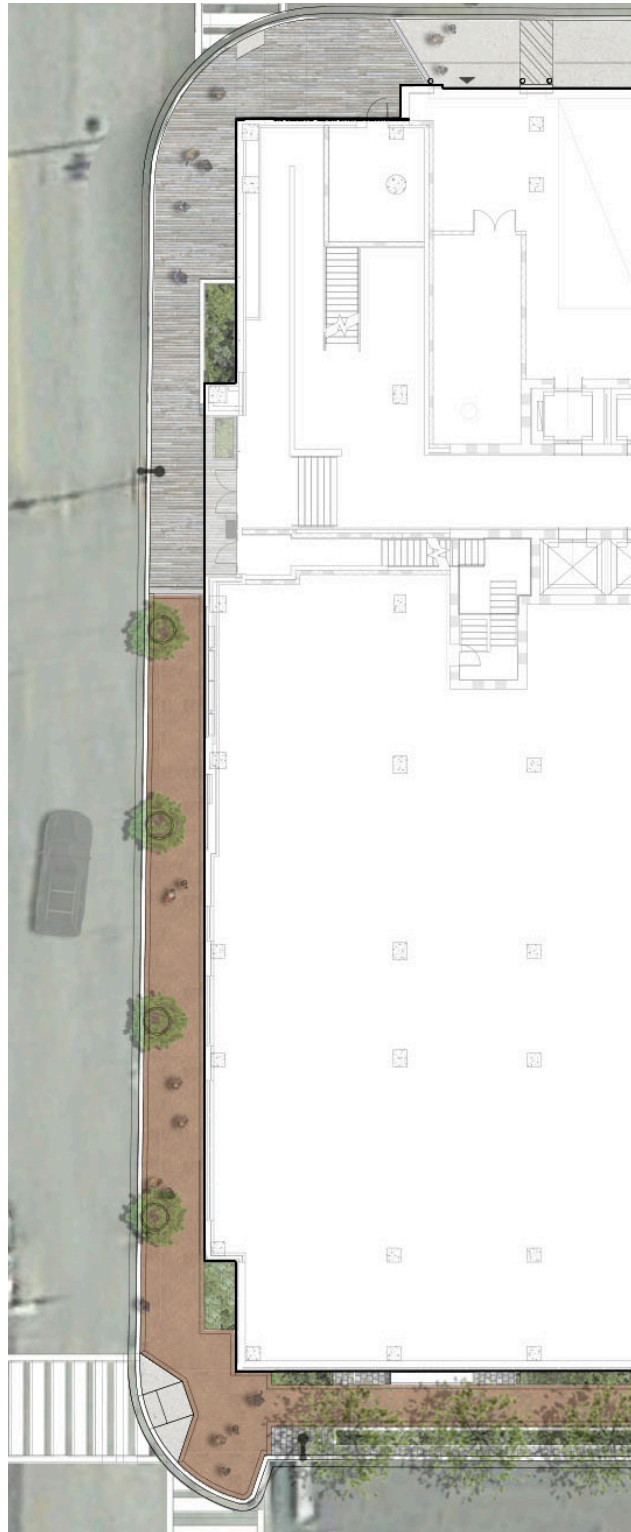
FEBRUARY 18, 2016  
UDARP - DESIGN DEVELOPMENT SESSION

L-11

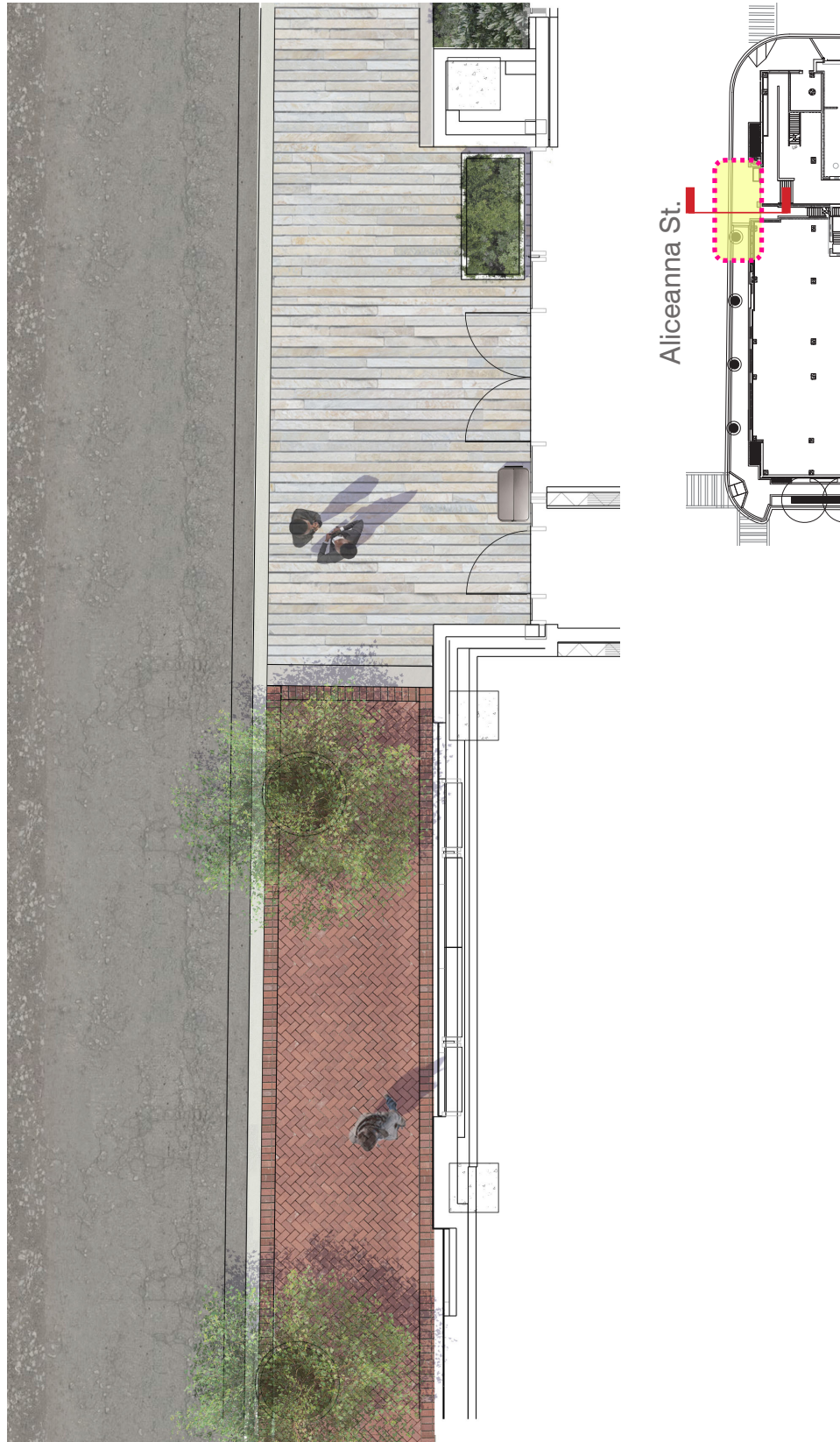
MAHAN RYKIEL  
LANDSCAPE ARCHITECTURE  
URBAN DESIGN & PLANNING



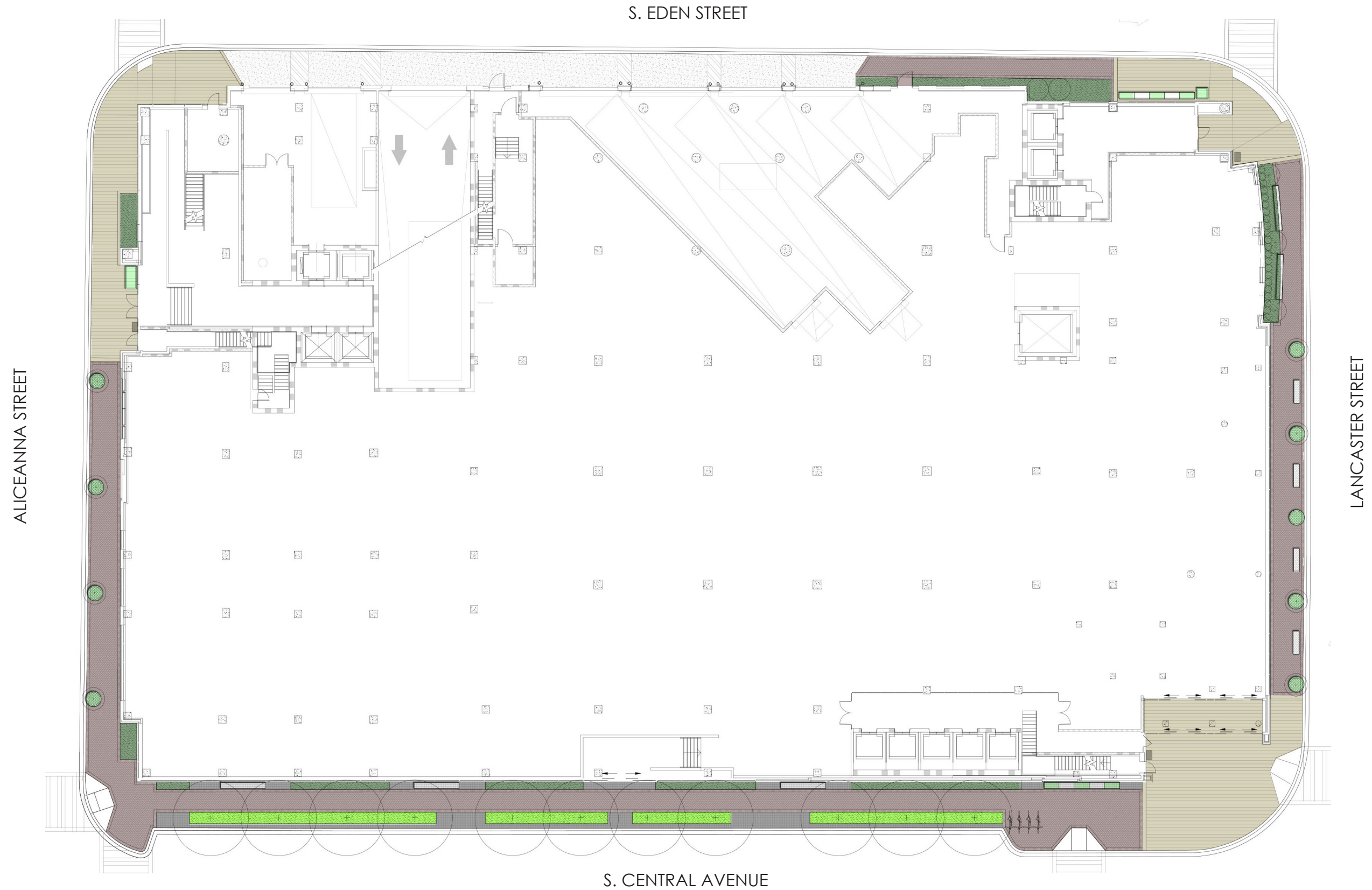
# ALICEANNA ST. | REVISIONS



# ALICEANNA ST. | REVISIONS



# OVERALL SITE | MATERIALS



HARBOR EAST



HARBOR EAST  
711 S. CENTRAL AVE, BALTIMORE, MD/ BCI LOT

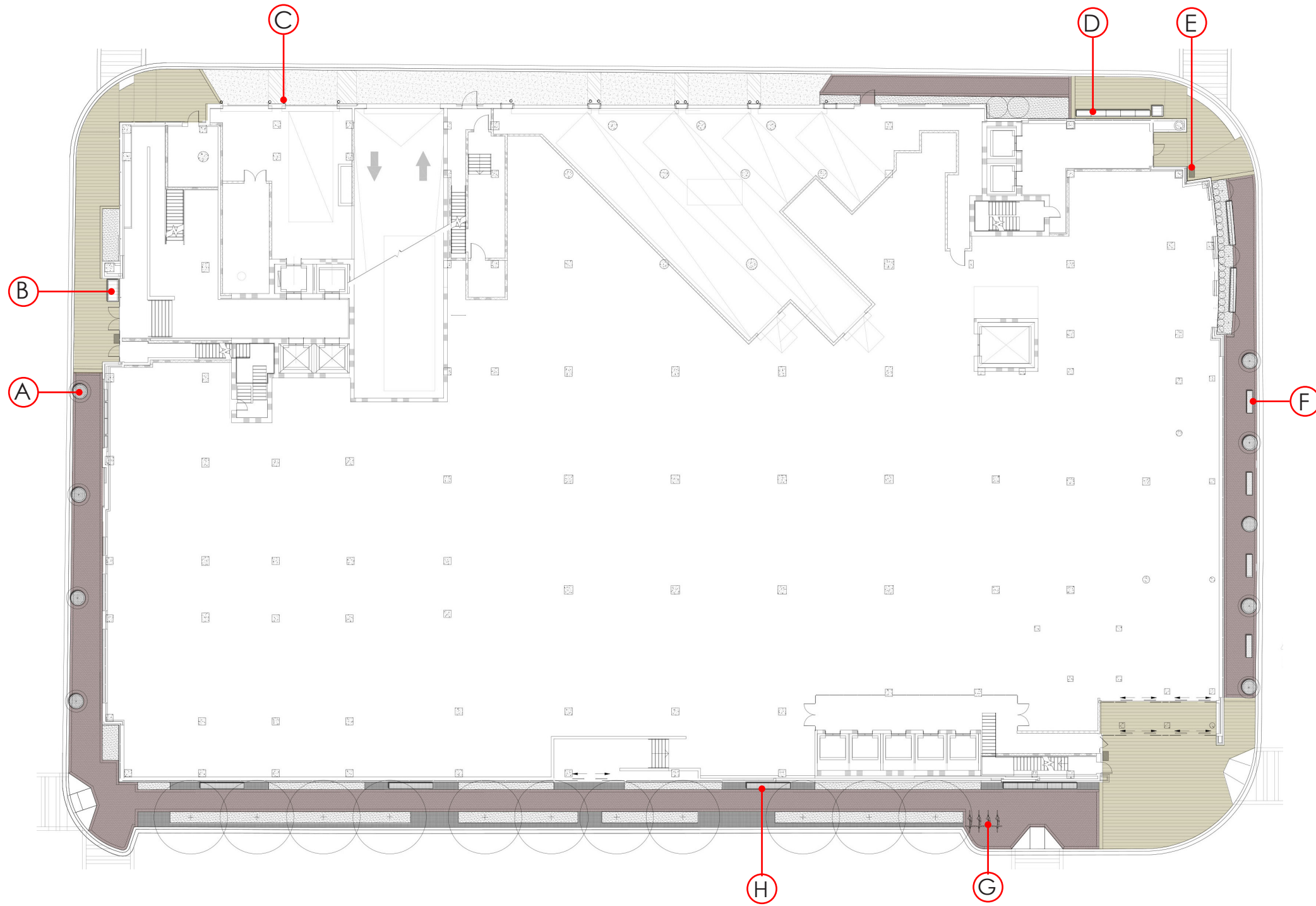
FEBRUARY 18, 2016  
UDARP - DESIGN DEVELOPMENT SESSION

L-14

MAHAN RYKIEL  
LANDSCAPE ARCHITECTURE  
URBAN DESIGN & PLANNING



# OVERALL SITE | HARDSCAPE

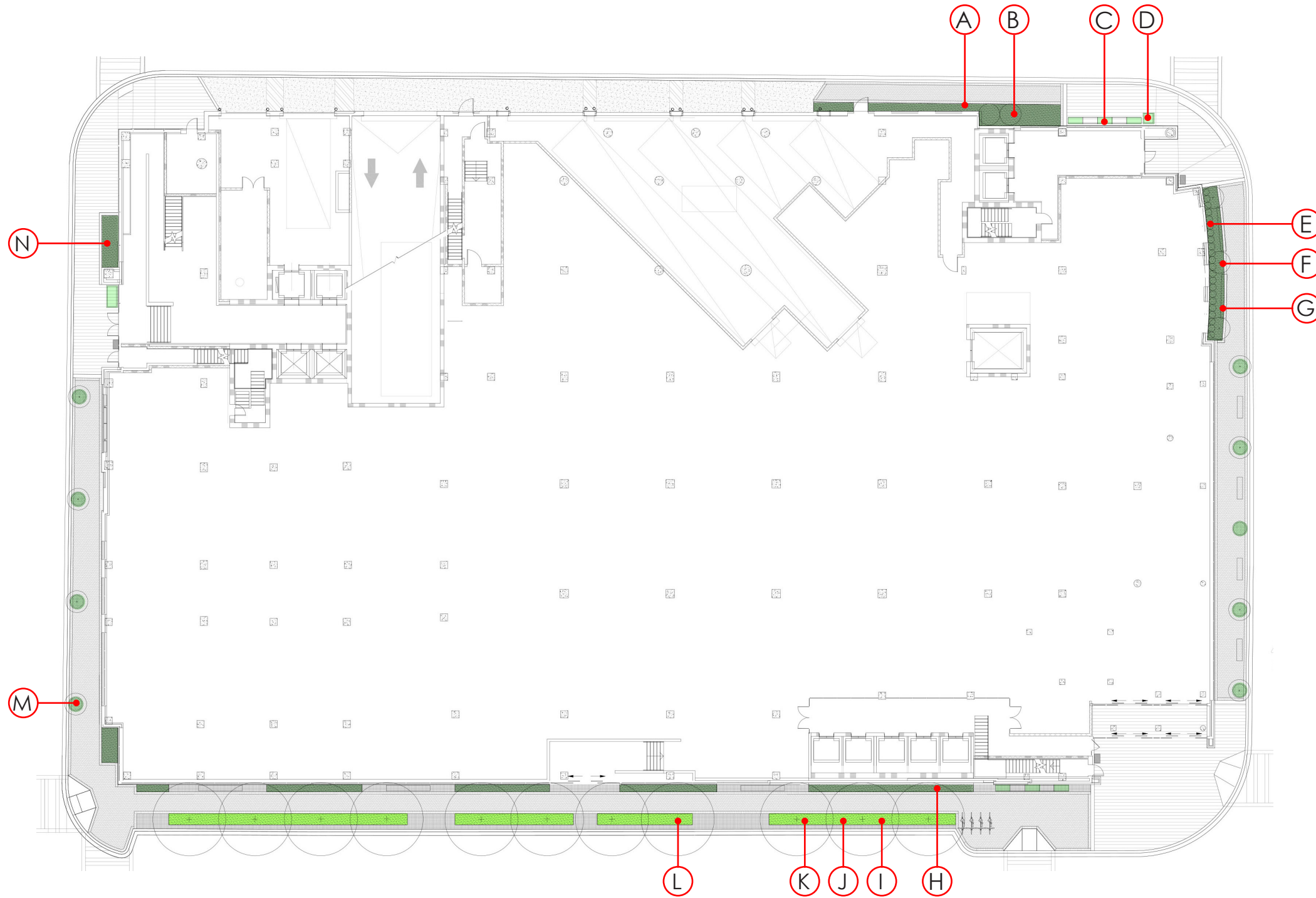


PAVING TYPES:

-  Brick
-  Specialty Stone
-  Concrete
-  Cobble Stone



# OVERALL SITE | LANDSCAPE





**THANK YOU.**