

University Lofts Location Map



Site from Fayette Street (incl. building to be demolished)



Fayette and Eutaw, NW corner (Drover's Bank)



Eutaw Street, W side



Eutaw Street, W side



Fayette and Paca, NW corner



Fayette and Paca, NW corner (across from site)



Paca Street, W side (across from site)



Site from Fayette and Paca, NE corner



Fayette and Paca, SW corner



Fayette and Paca, SW corner



Fayette Street, S side (across from site)



Fayette and Paca, NE corner (across from site)





Fayette and Eutaw, SW corner



Fayette and Eutaw, SE corner



Eutaw Street, S side



Paca Street looking S



Eutaw Street, E side (across from Drover's Bank)



Fayette and Eutaw, NE corner (across from Drover's Bank)



Marion Street looking E



Marion Street looking E



Greater Context: Masonry Loft Buildings



Greater Context: Masonry Loft Buildings

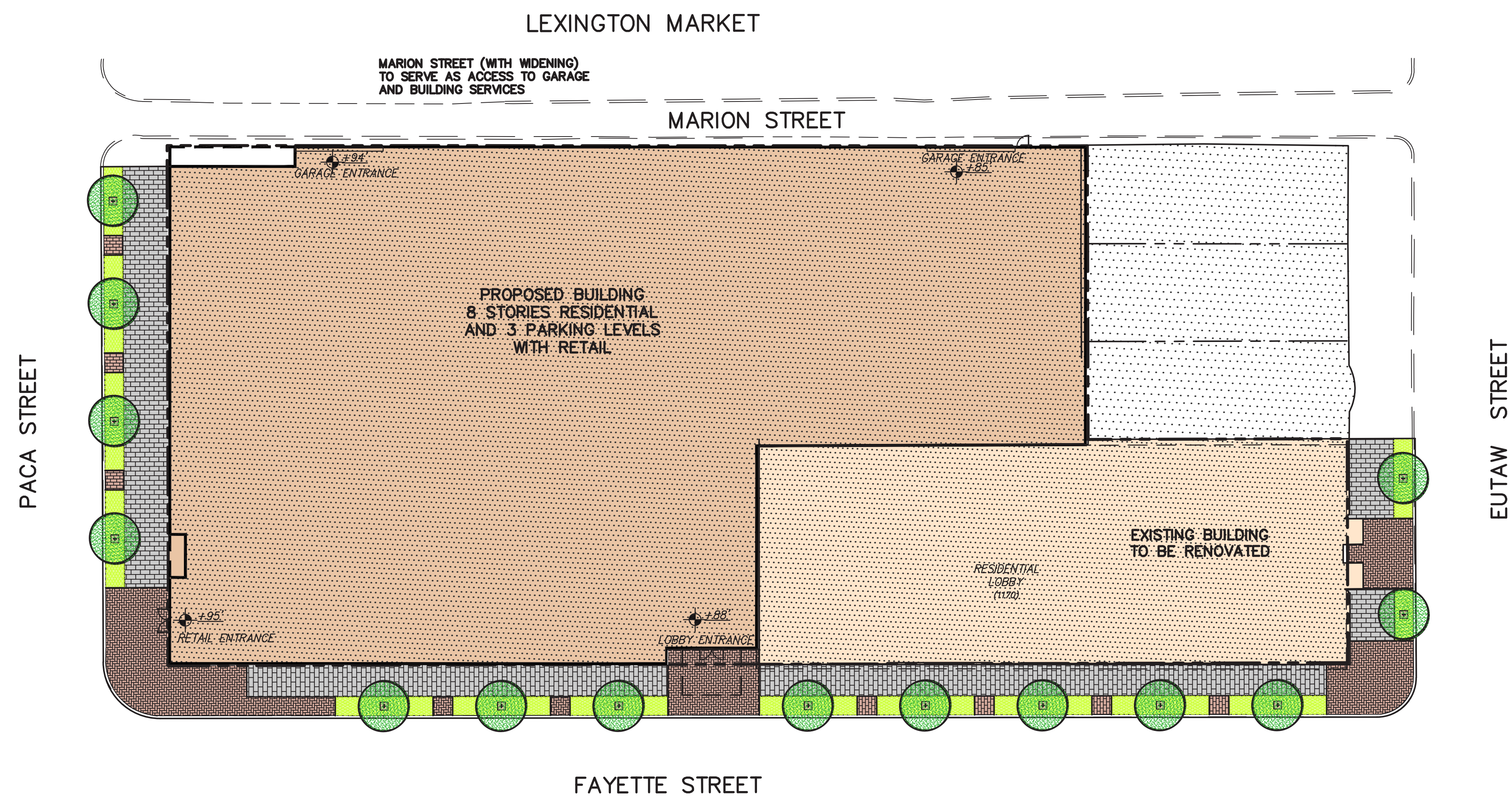


Greater Context: Masonry Loft Buildings

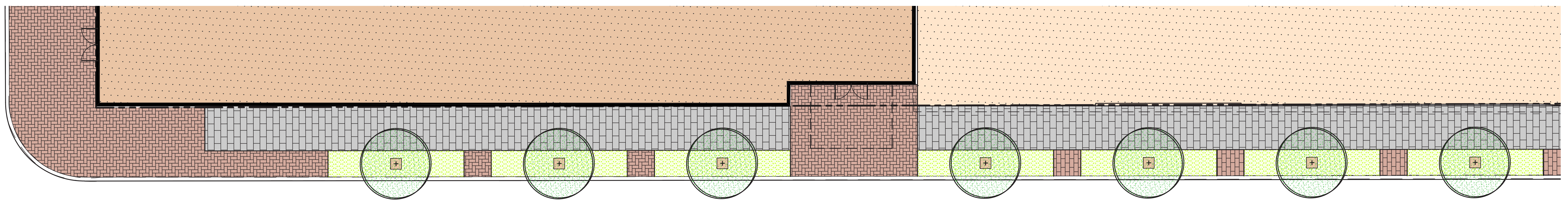
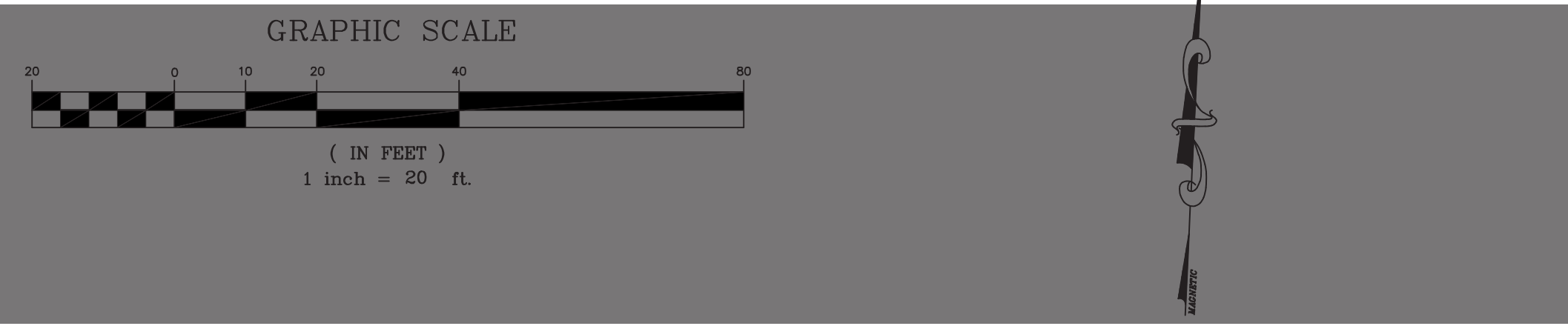


Greater Context: Masonry Loft Buildings

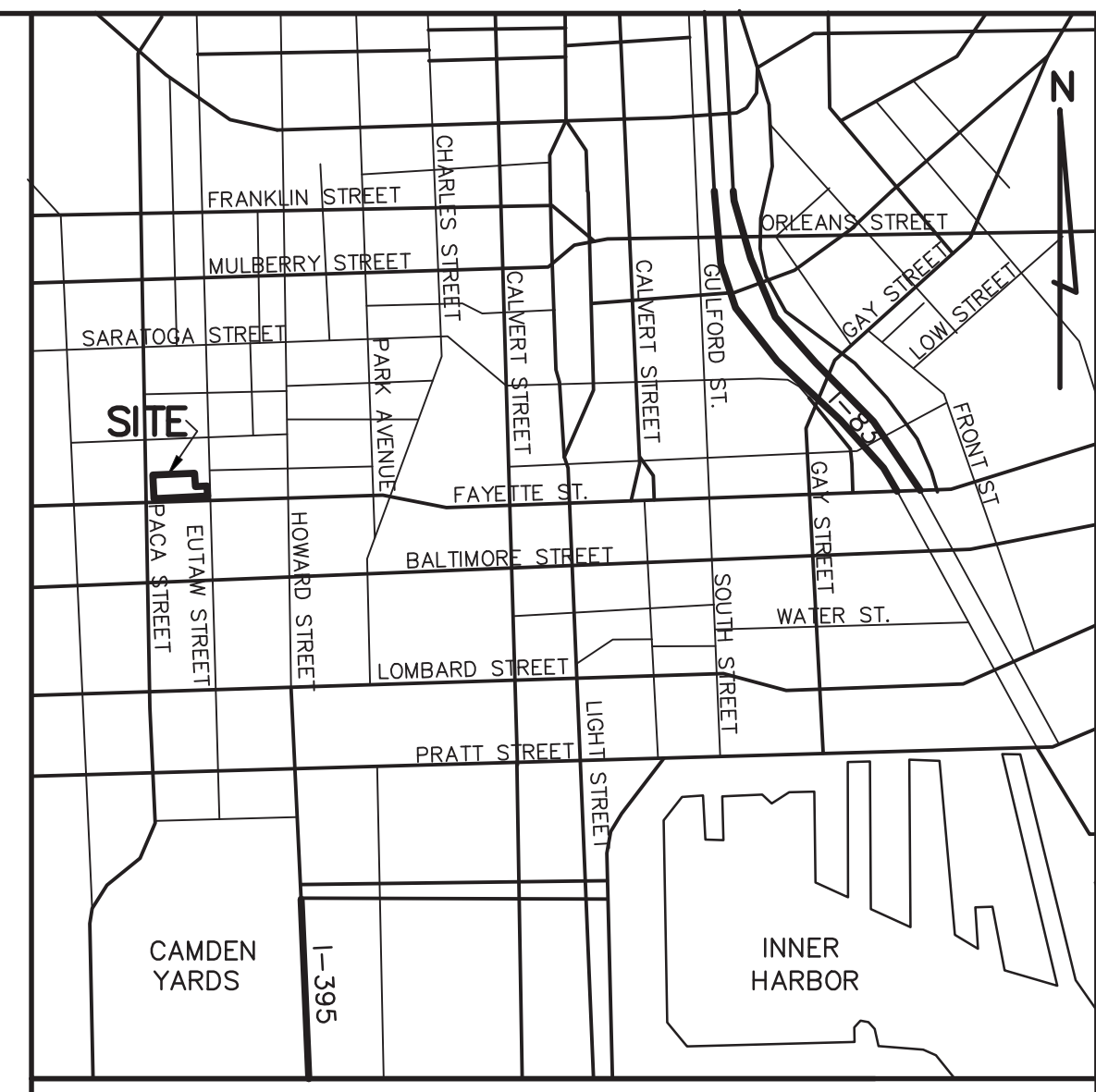
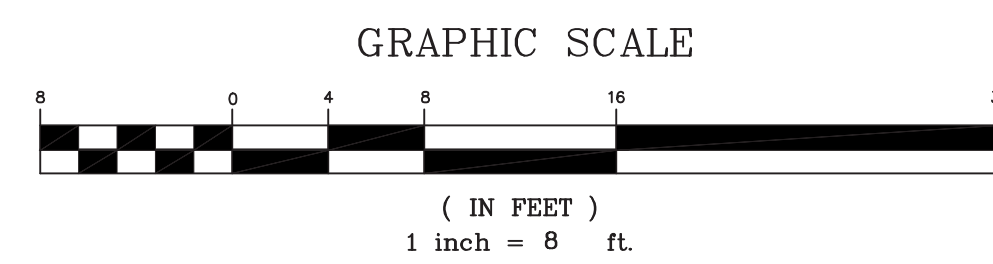




OVERALL SITE PLAN



DETAIL PLAN



LOCATION MAP SCALE: 1" = 500'

WARD 04 BLOCK 0618
SECTION 07 LOT 1/2,3/4,5,33,34 (To Be Consolidated)

OWNER: STATE OF MARYLAND, UNIVERSITY OF MARYLAND

CONTRACT PURCHASER/APPLICANT/DEVELOPER:

SITE AREA: 0.806 ACRES

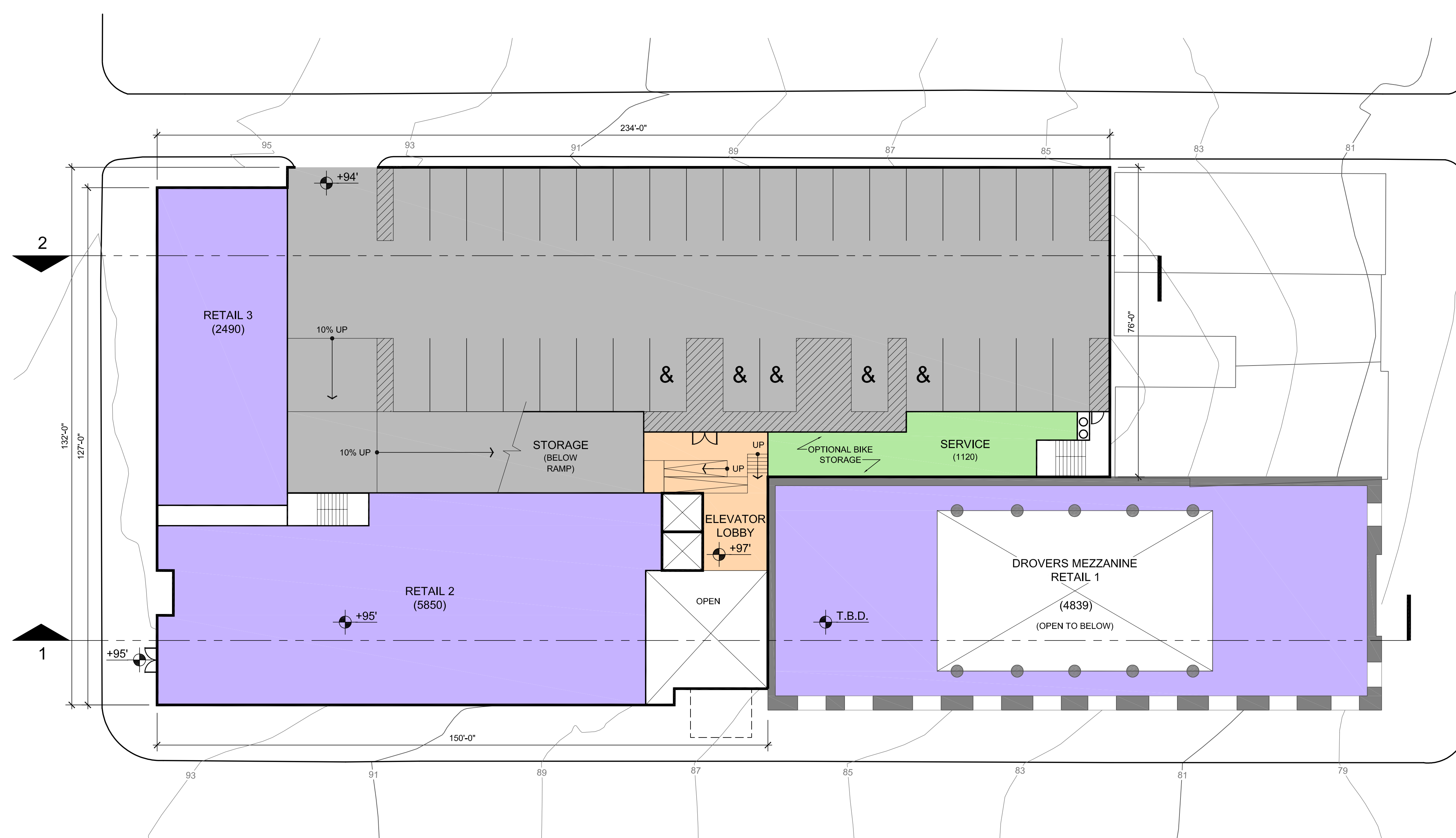
ZONING: B-4-2

EXISTING USE: VACANT

PROPOSED USE: HOUSING, RETAIL



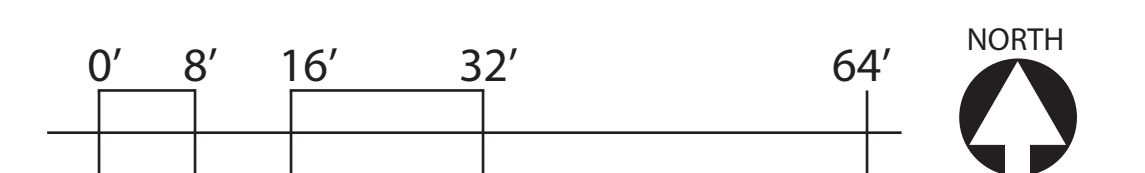
P.O. Box 19059
Towson, Maryland 21284
Phone 410-532-0101
Fax 410-532-0104
Email GOWERTHOMP@AOL.COM

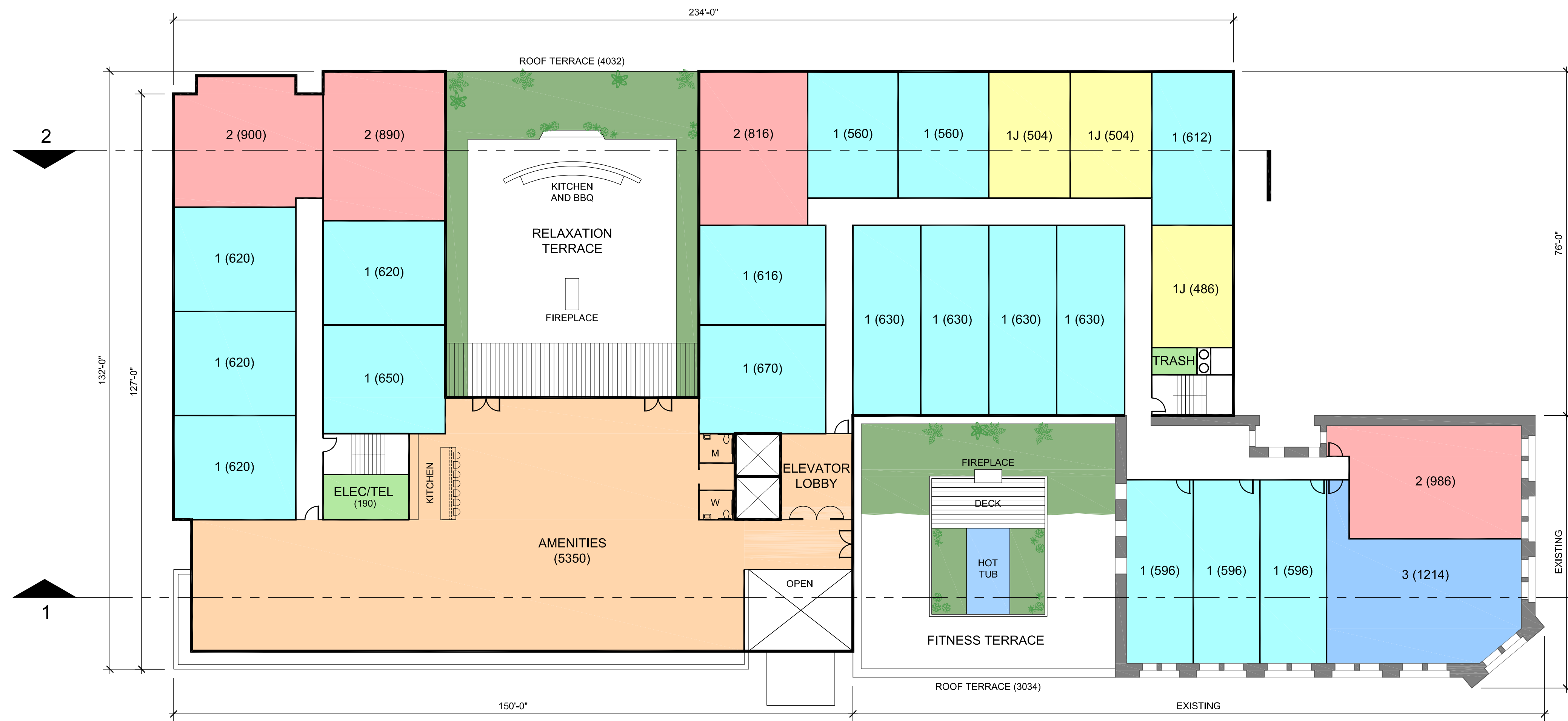


Parking Level 2

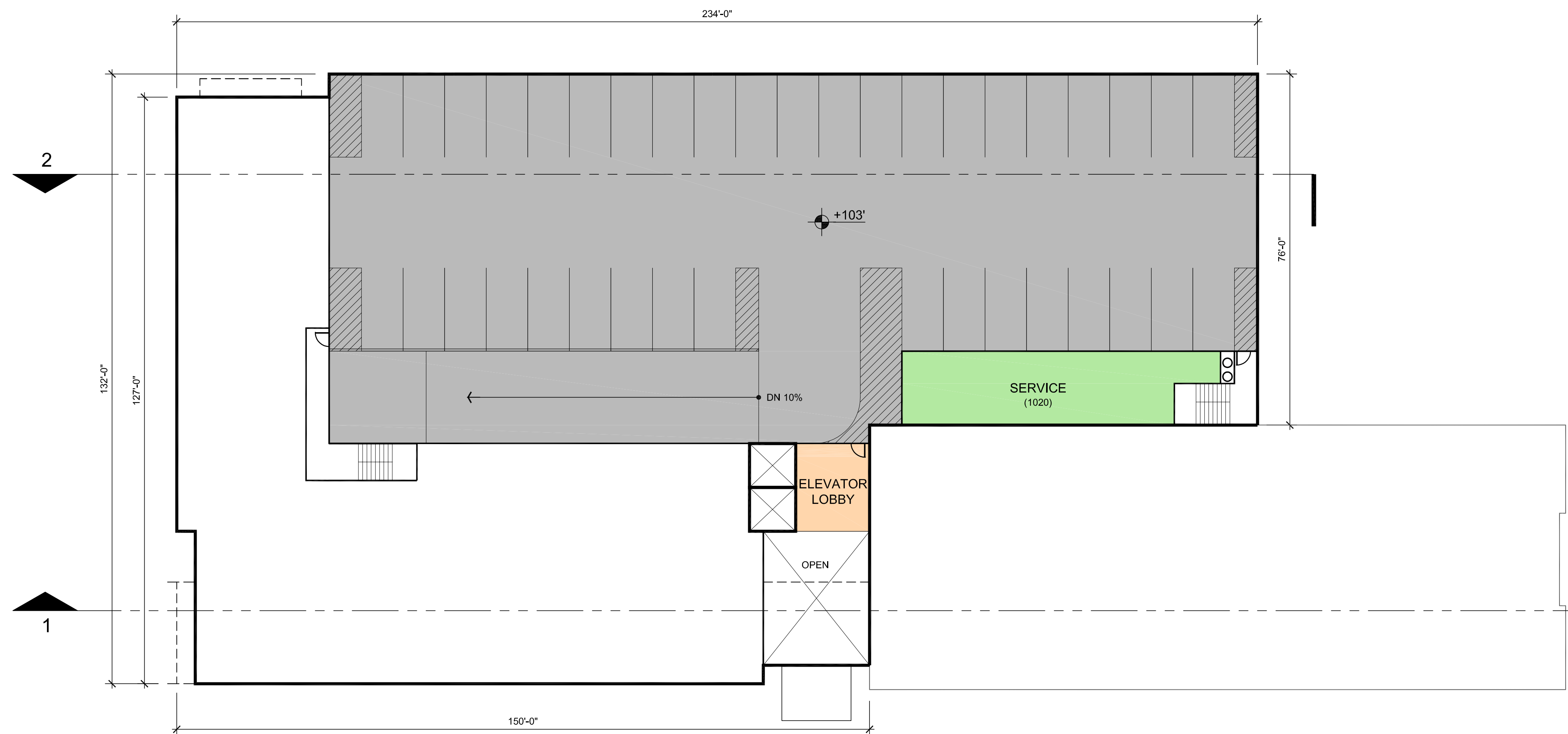


Parking Level 1

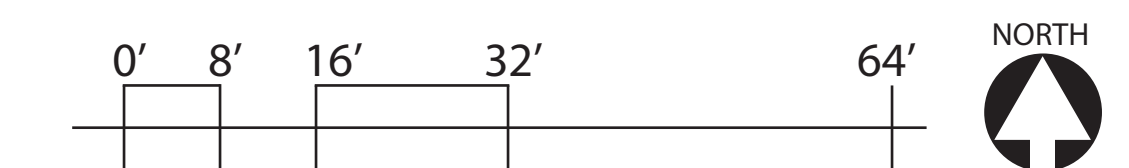


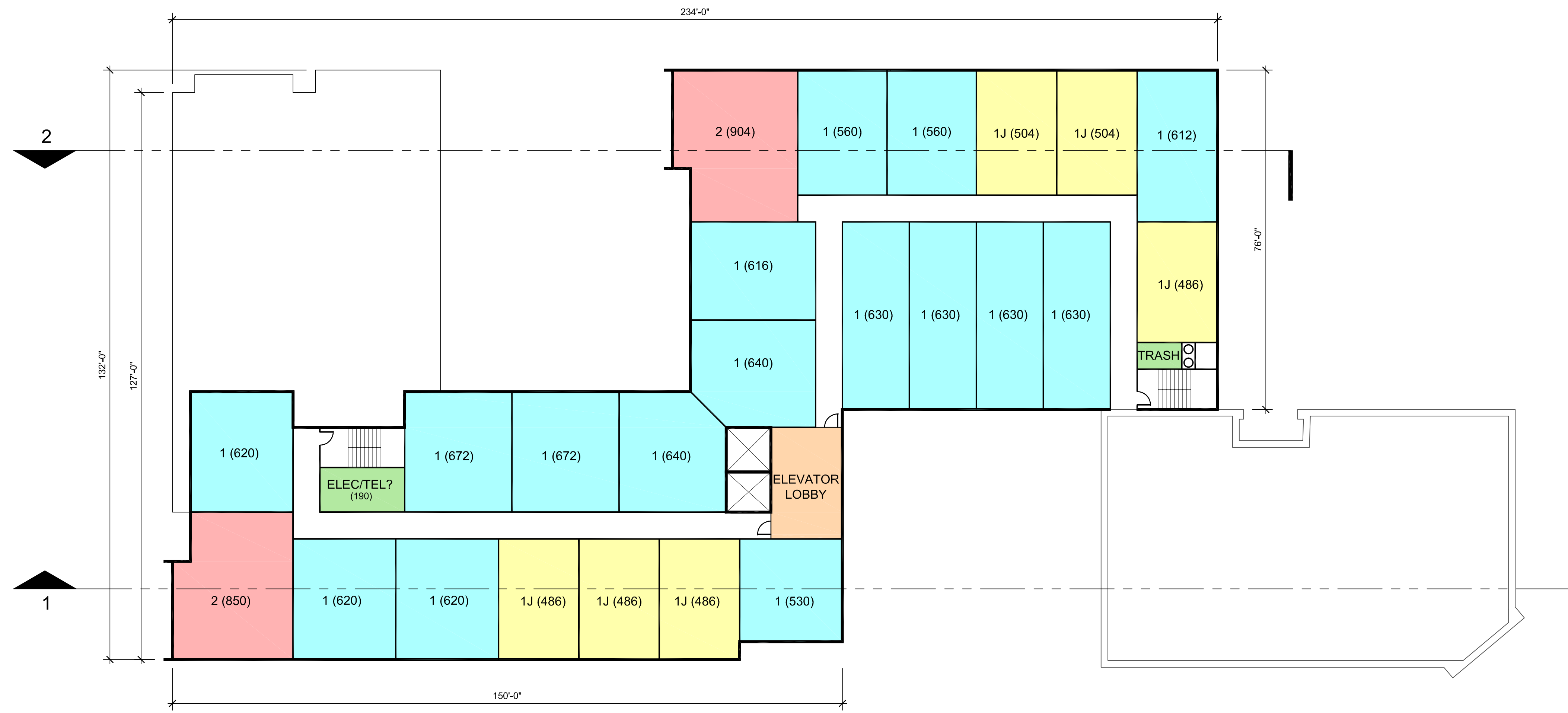


Floor 1

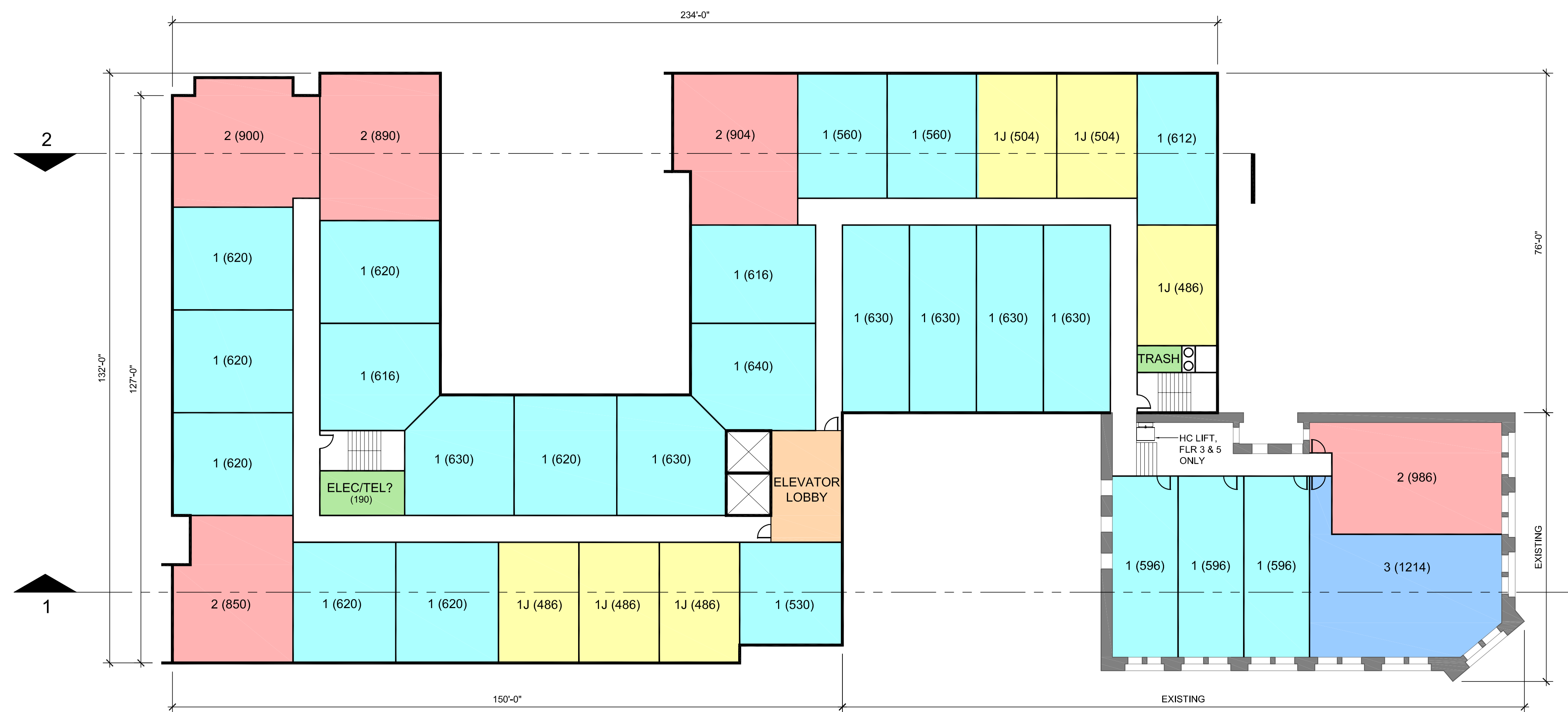


Parking Level 3

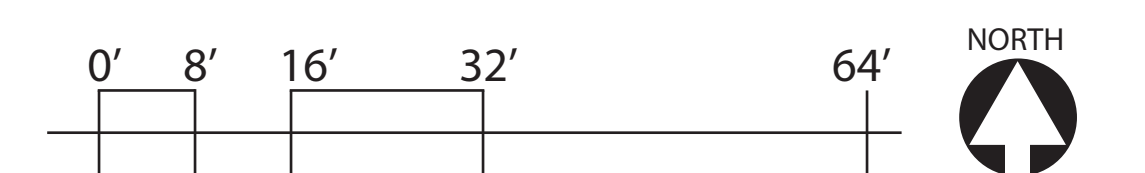




Floor 5, 6, 7, 8, and 9



Floor 2, 3, and 4





MARKS, THOMAS ARCHITECTS

University Lofts View from W Fayette Street

December 1, 2016

Copyright - All Rights Reserved

These drawings are protected under the Copyright Act of 1976 and shall not be reused without the written permission of the Architect.

Architectural building designs, unit layouts, unit mix and exterior elevations renderings shown hereon are for illustrative purposes only and subject to change with final design and permit documents.



University Lofts View from N Eutaw Street

December 1, 2016



University Lofts View fom N Paca Street and Aerial View

December 1, 2016

MARKS, THOMAS ARCHITECTS

Copyright - All Rights Reserved

These drawings are protected under the Copyright Act of 1976 and shall not be reused without the written permission of the Architect.

Architectural building designs, unit layouts, unit mix and exterior elevations renderings shown hereon are for illustrative purposes only and subject to change with final design and permit documents.



South Elevation



West Elevation - Courtyard

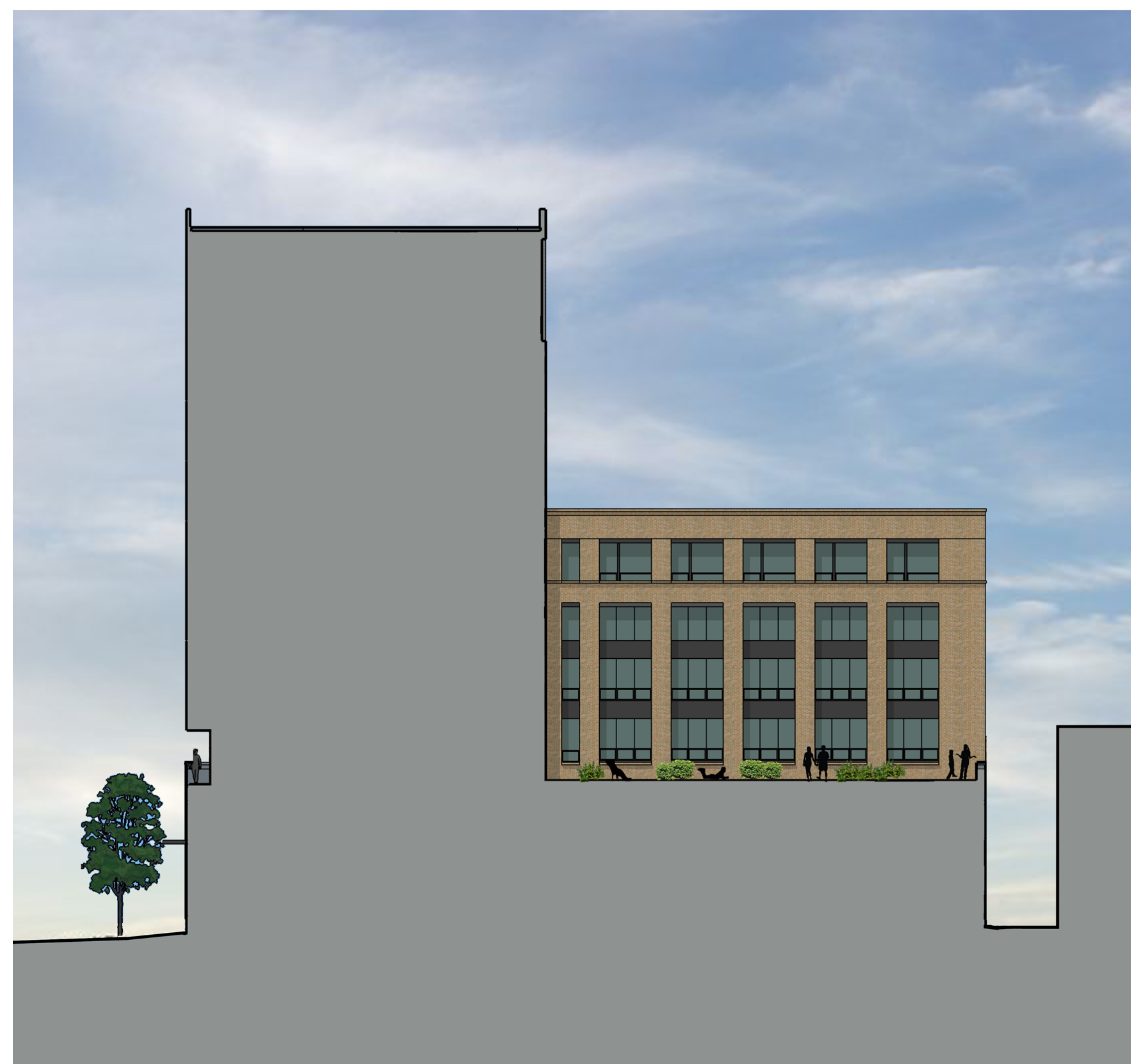


West Elevation





North Elevation



East Elevation - Courtyard

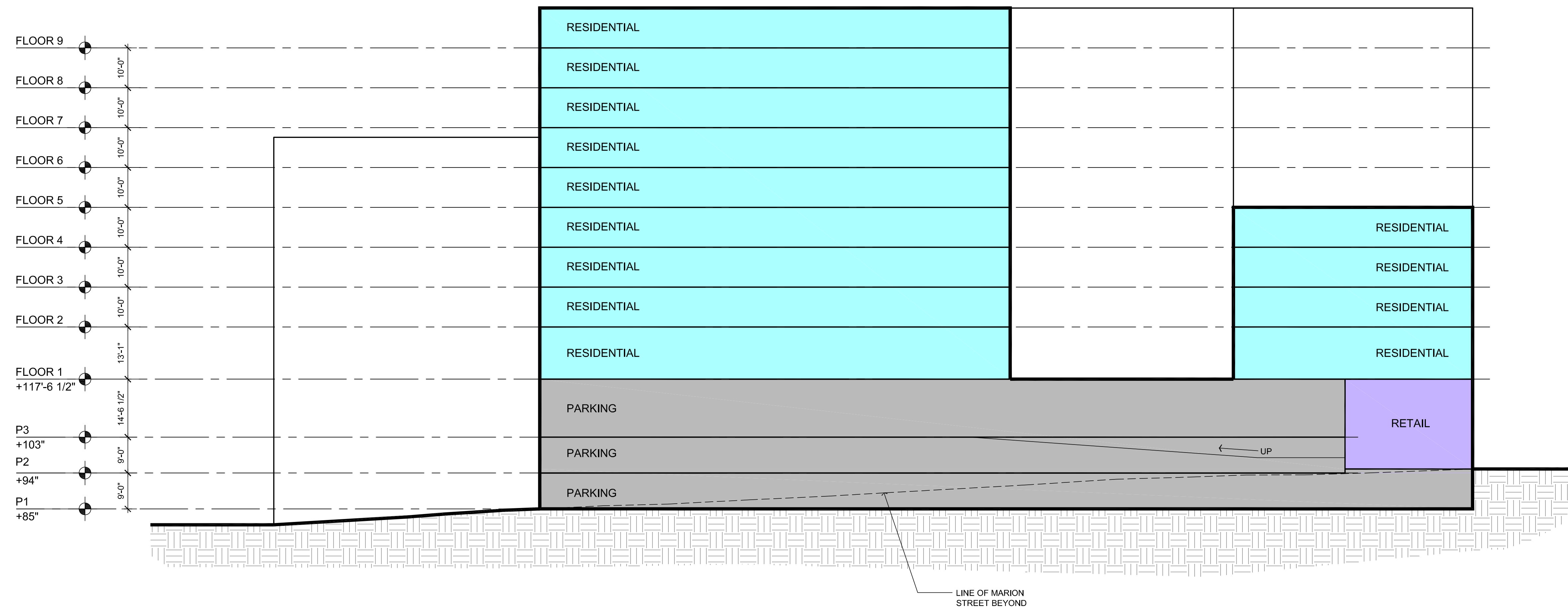


East Elevation - Courtyard

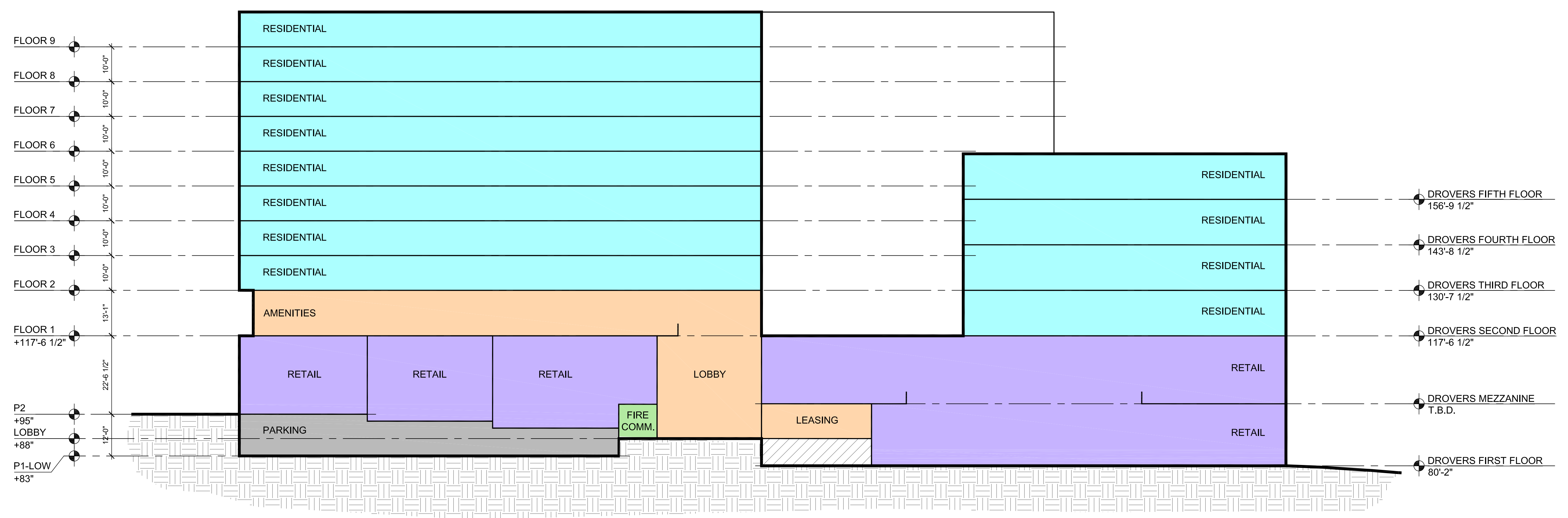


East Elevation





Section 2



Section 1