

2017|04|06

# 800 FLEET

UDARP Discussion



hord | coplan | macht

## AGENDA

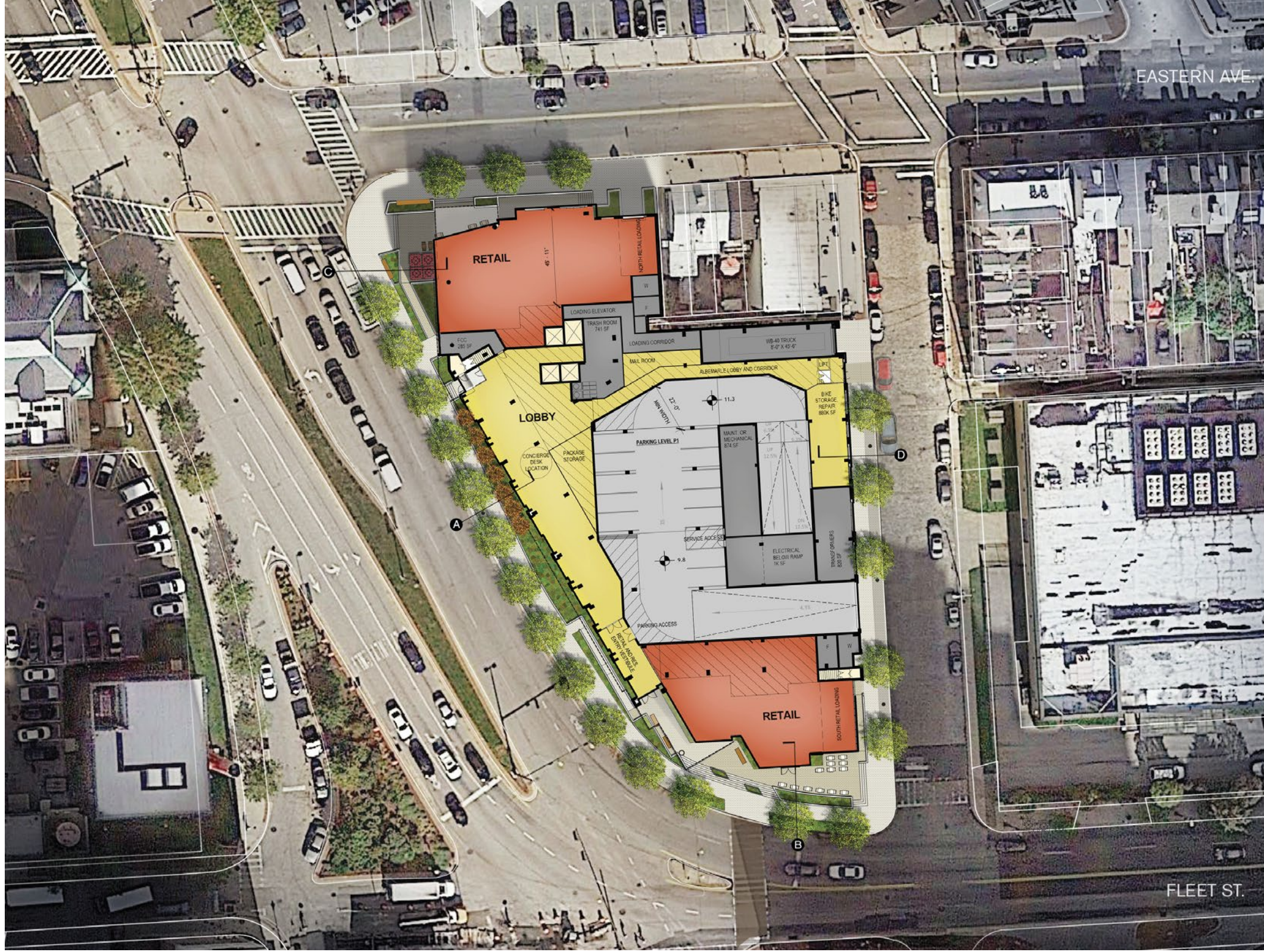
- 01 Vehicular drop-off on President St.
- 02 Residential lobby location
- 03 Overall massing
- 04 Miscellaneous Facade Comments
  - ...Northeast corner – “townhouse” volume
  - ...”End Cap” massing
  - ...Stacked v staggered masonry grid
  - ...Penthouse expression
  - ...Residential entry visibility
  - ...Simplification of Southwest corner retail
  - ...Exposed column expression

# 01

Vehicular drop-off on President St.

3 800 Fleet

 hord | coplan | macht



4 800 Fleet

# 02

## Residential Lobby Location/Visibility

5 800 Fleet

 hord | coplan | macht



Schematic UDARP

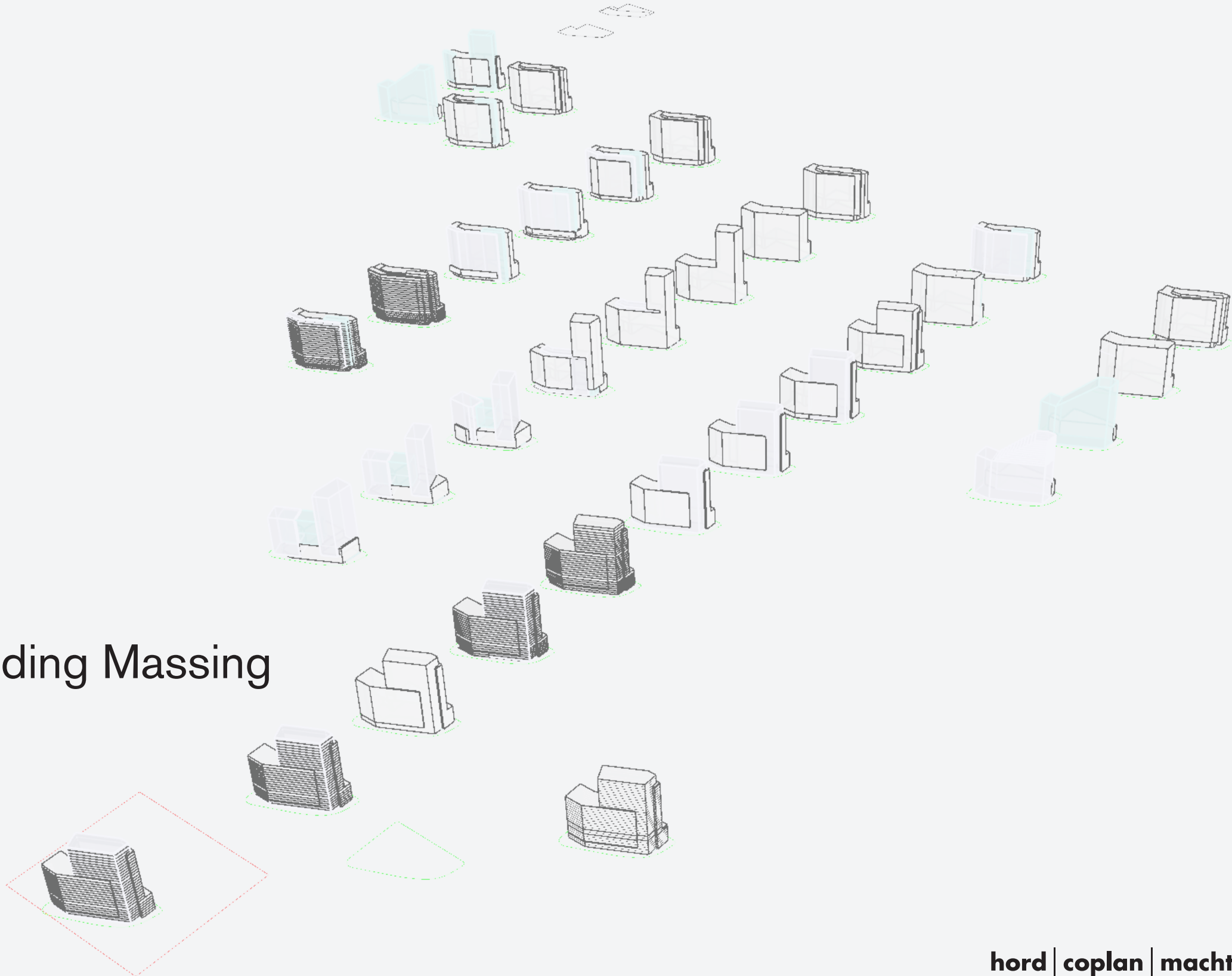
6 800 Fleet



Updated Plan

# 03

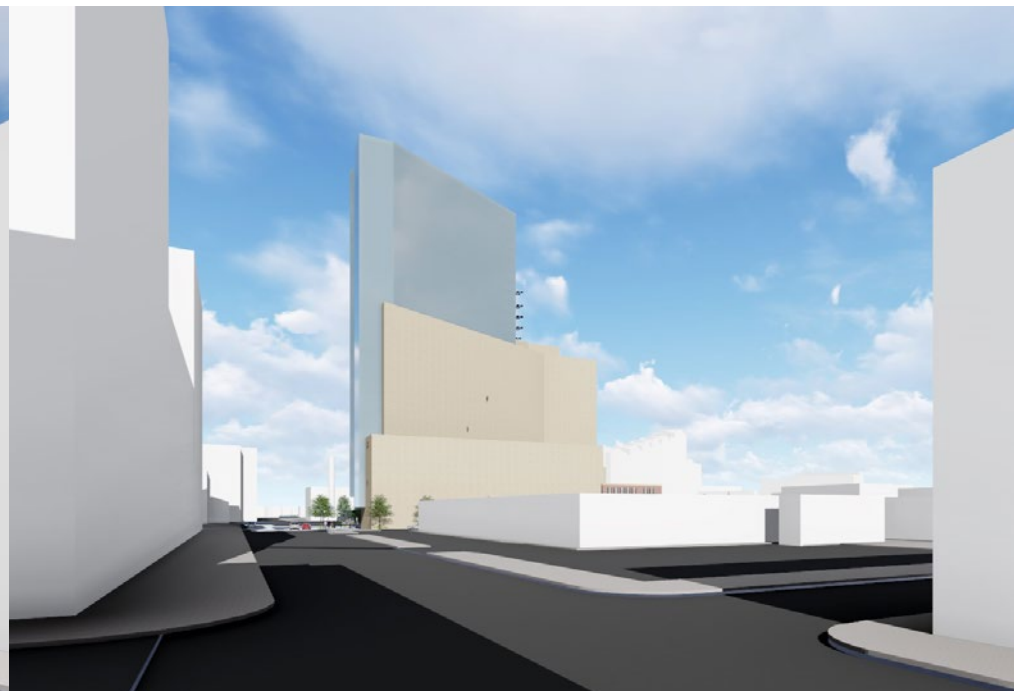
## Overall Building Massing



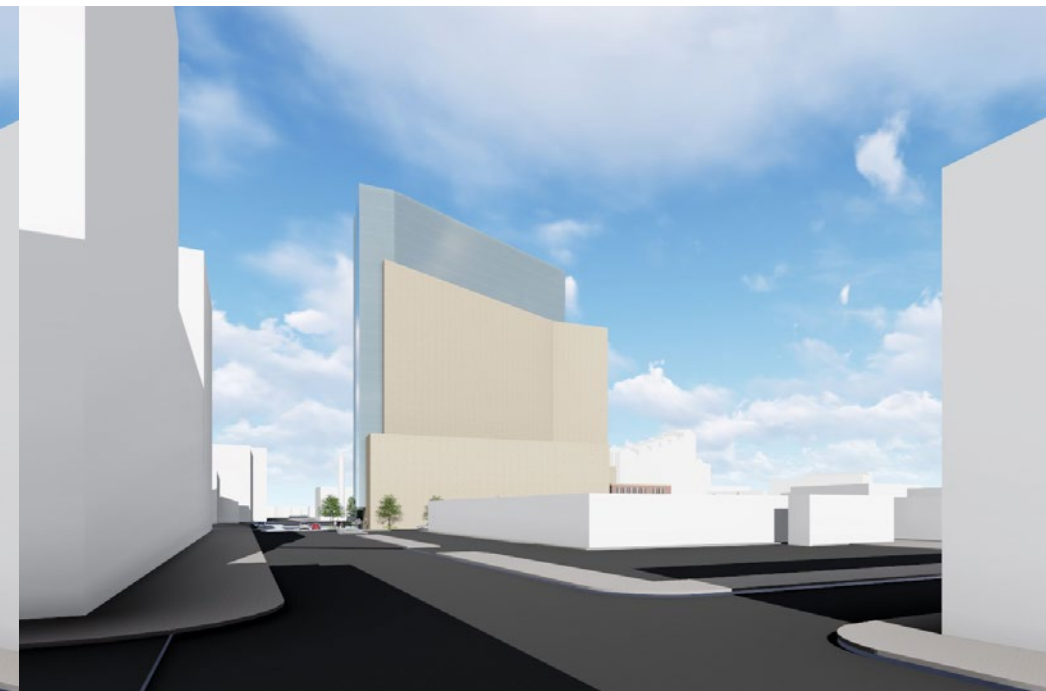
7 800 Fleet



Schematic UDARP



Alt Massing\_01



Alt Massing\_02



Schematic UDARP



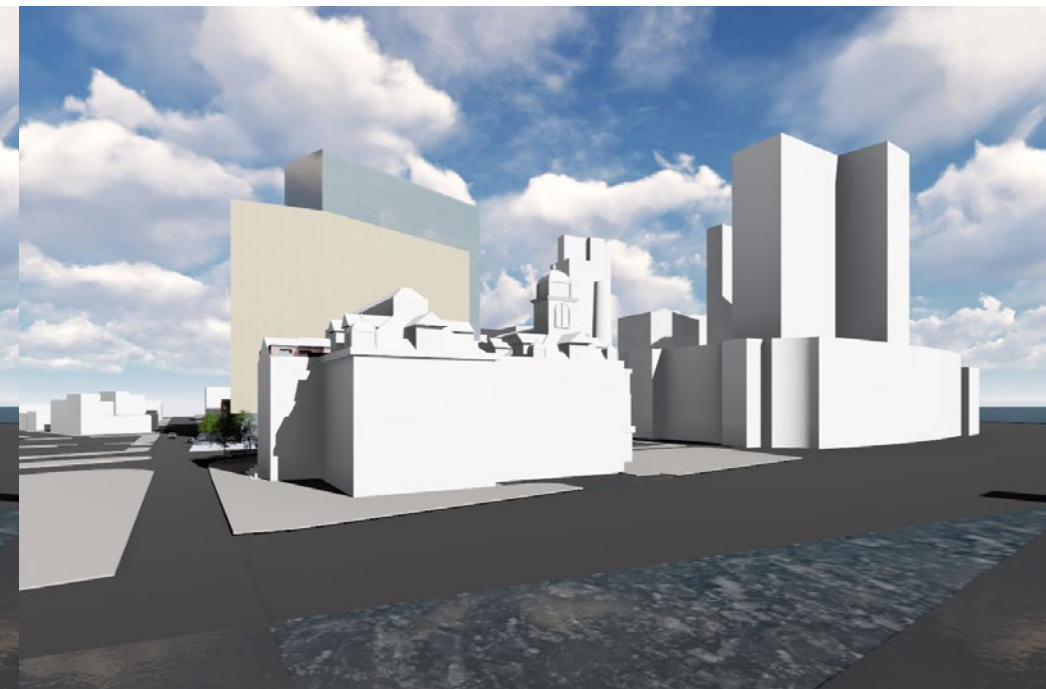
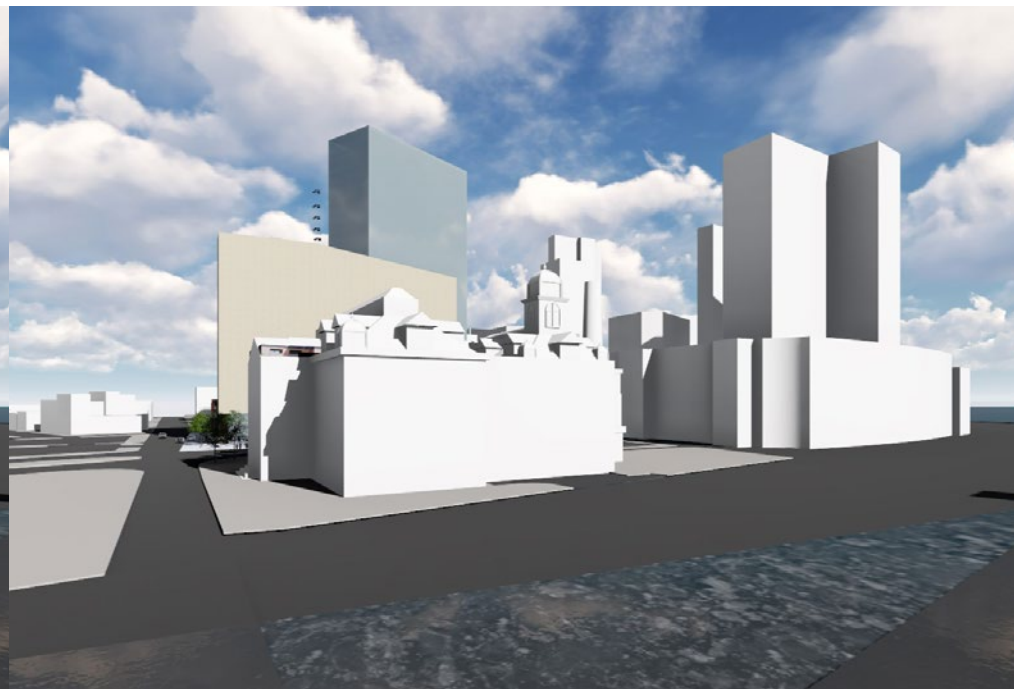
Alt Massing\_01



Alt Massing\_02

**8 800 Fleet**





Schematic UDARP

Alt Massing\_01

Alt Massing\_02



Schematic UDARP

Alt Massing\_01

Alt Massing\_02

9 800 Fleet



Schematic UDARP

Alt Massing\_01

Alt Massing\_02

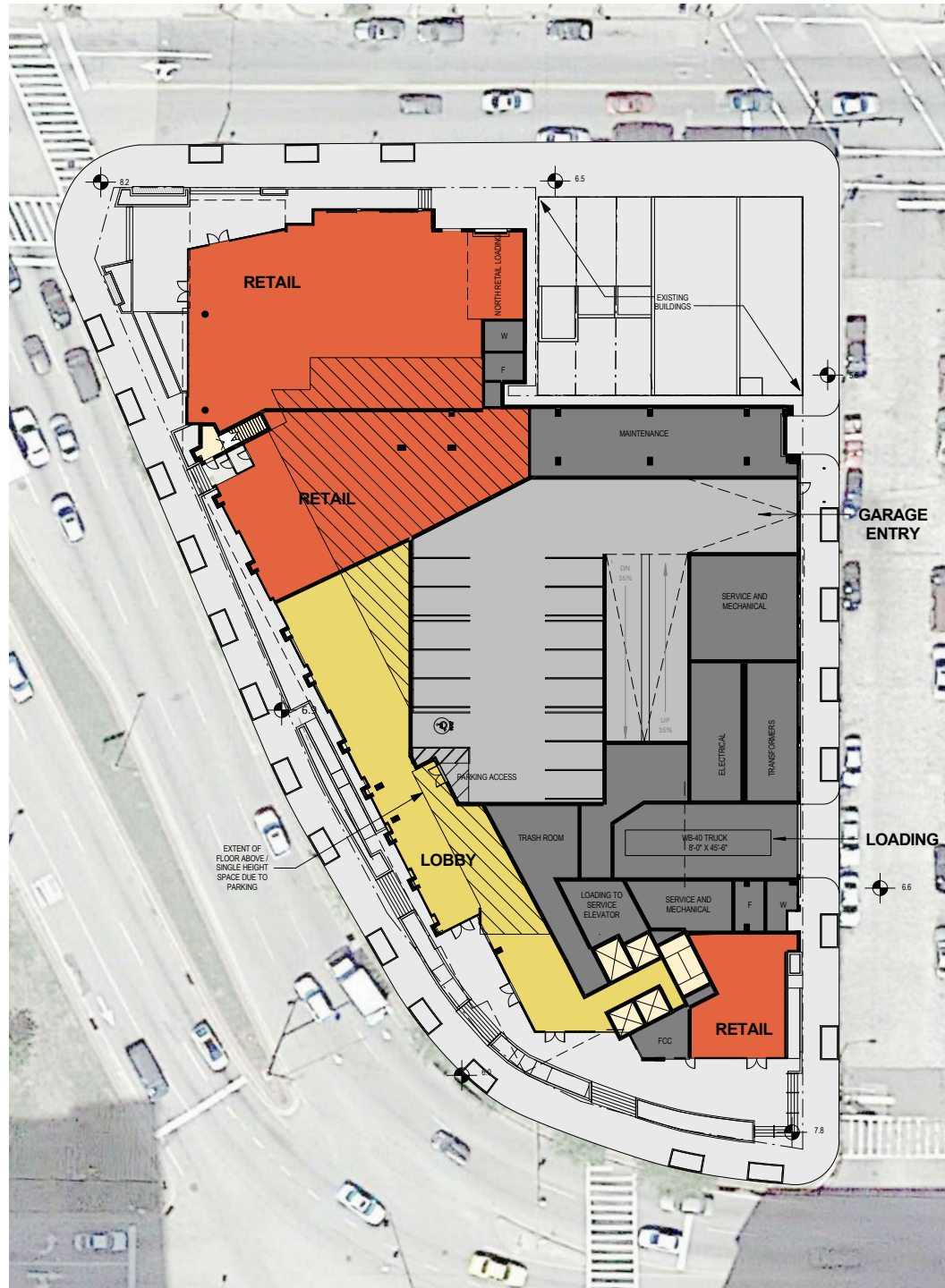


Schematic UDARP

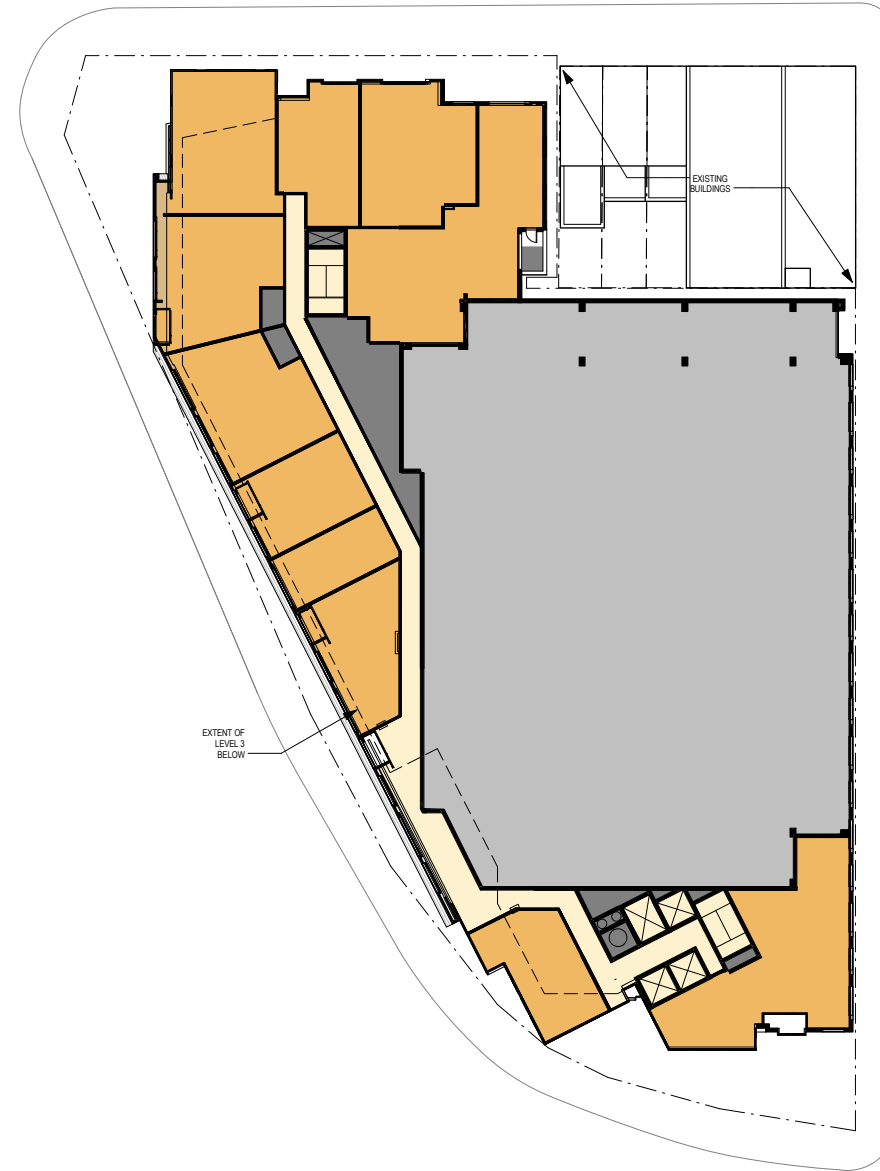
Alt Massing\_01

Alt Massing\_02

**10 800 Fleet**



Ground Floor Plan



Typical Garage Level

# 04

## Miscellaneous Facade Comments



Schematic UDARP

Suggested Massing

**13 800 Fleet**

**hord | coplan | macht**



Proposed Massing



Schematic UDARP



Suggested Massing

**15 800 Fleet**

**hord | coplan | macht**



Proposed Massing

**16 800 Fleet**

**hord | coplan | macht**





Schematic UDARP



Suggested Massing

**17 800 Fleet**

**hord | coplan | macht**



Proposed Massing

**18 800 Fleet**

**hord | coplan | macht**



Schematic UDARP



Proposed Facade

**19 800 Fleet**

**hord | coplan | macht**



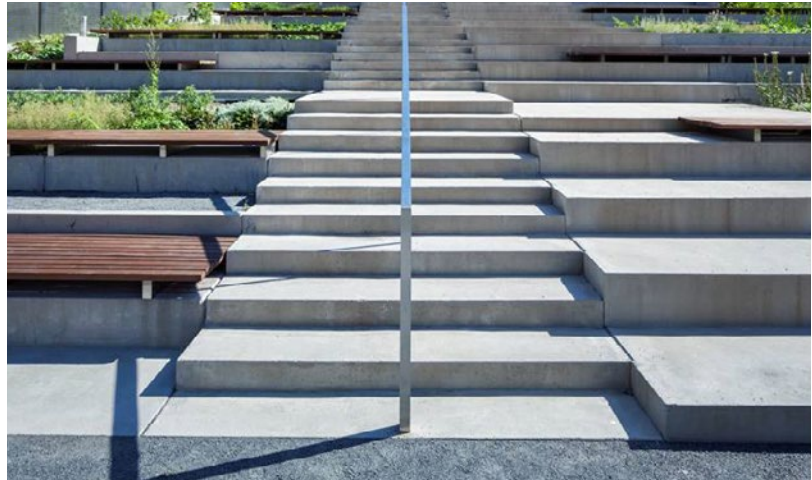
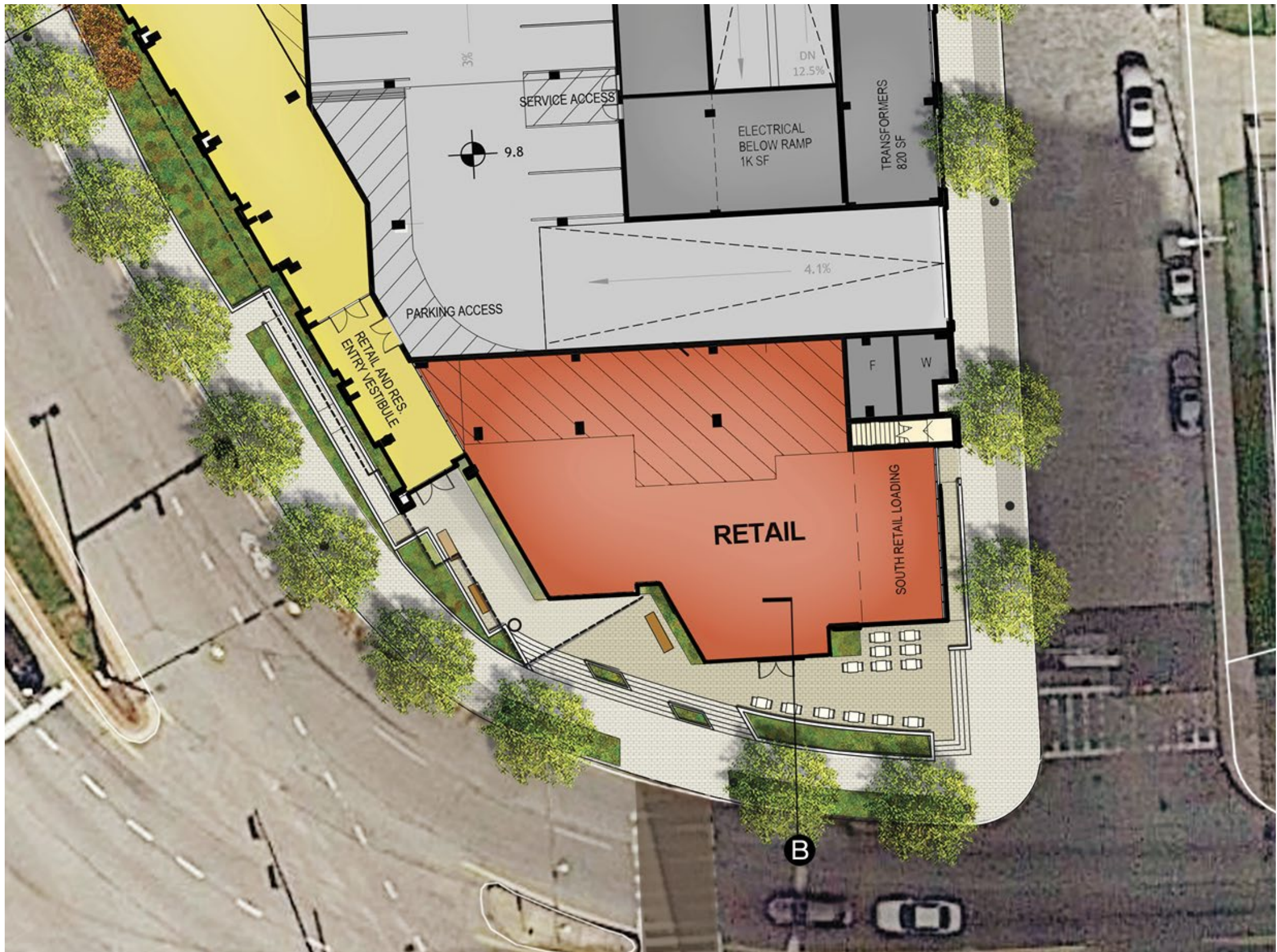
Schematic UDARP



Suggested | Proposed Massing

**20 800 Fleet**

**hord | coplan | macht**



21 800 Fleet





23 800 Fleet

hord | coplan | macht

