



WWW.RASHFIELD.ORG 

UDARP DISCUSSION 2

JUNE 16, 2016

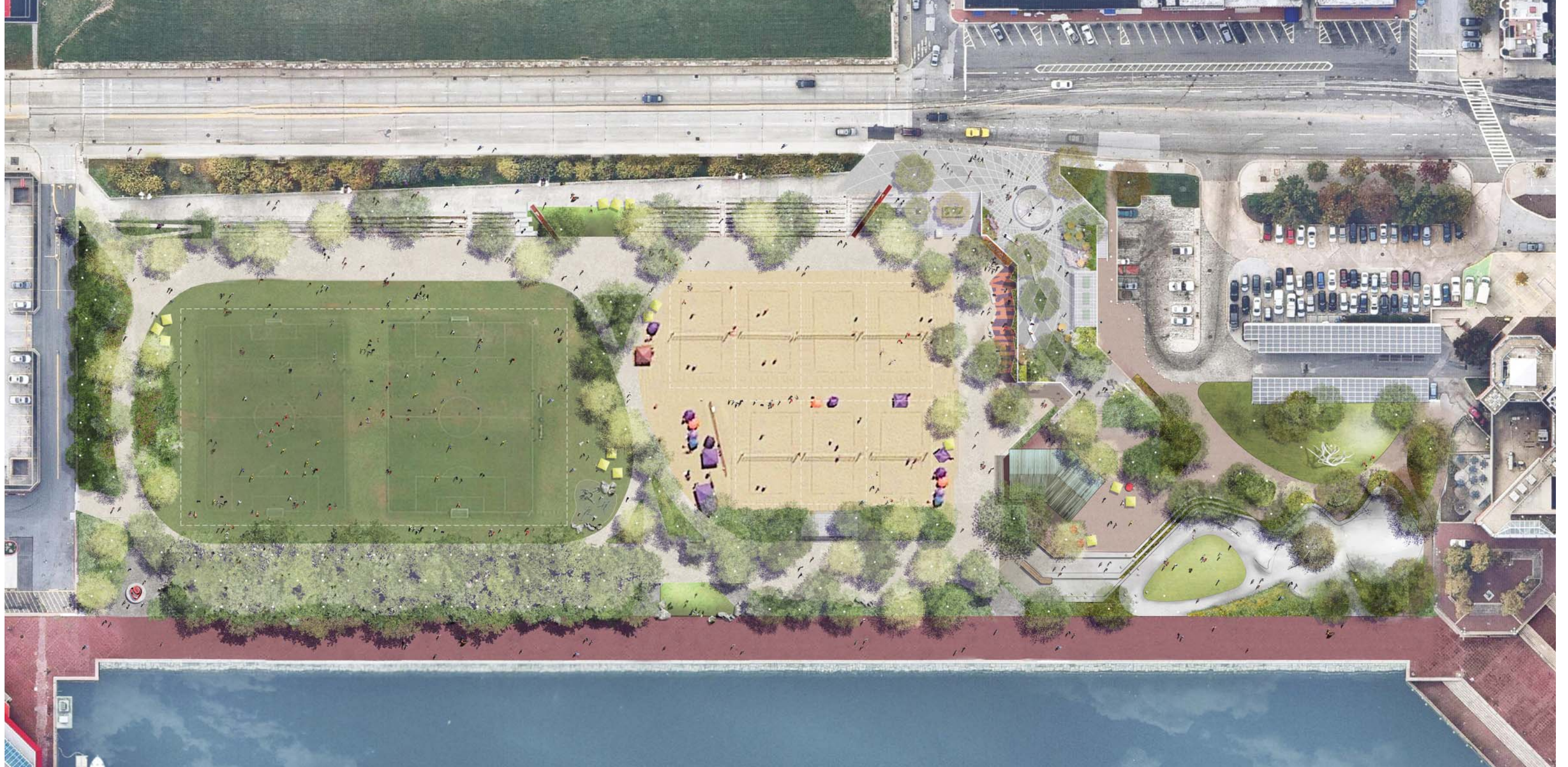
MAHAN RYKIEL
ASSOCIATES INC

WATERFRONT
PARTNERSHIP
OF BALTIMORE

AGENDA

UDARP 1 Comments
Post-UDARP 1 Revisions
Discussion & Next Steps

PREVIOUS SITE PLAN



COMMENTS

MOVEMENT AND CONNECTIVITY

- Need stronger connections and gateways between the waterfront promenade and Federal Hill.
- Review/revise southeast entry, next to parking garage, and north-south connection along west edge of park
- Further coordinate east and south edges to ensure adequate connections and transitions to park

PRIDE MEMORIAL LOCATION

- Concern with new location of Pride Memorial; examine more contemplative environment; closer to water

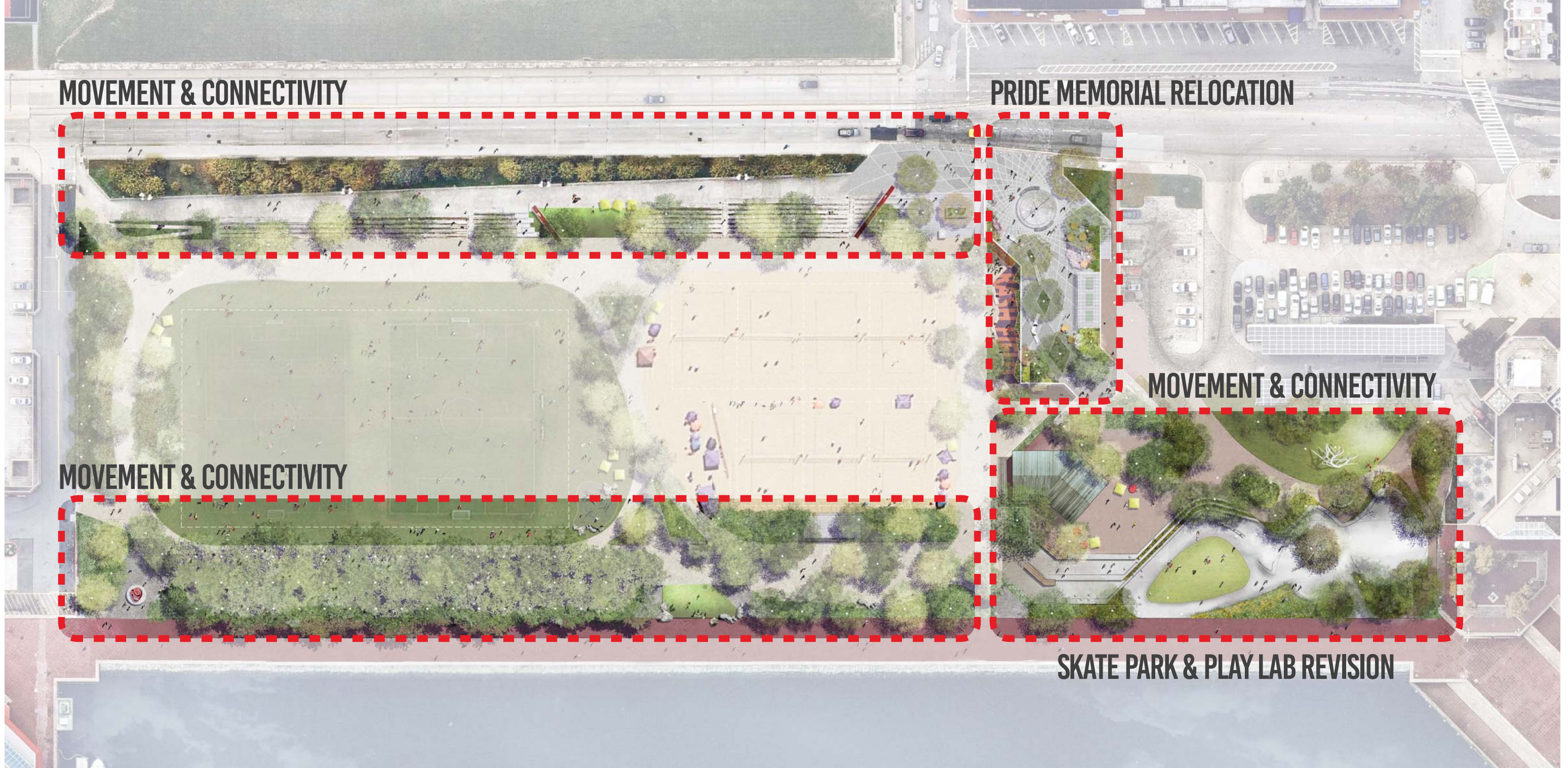
PROGRAMMED RECREATION

- Positive reaction to variety of programming 'built' in the design
- Enhance recreational diversity for users
- Revisit location, size and configuration of skate park, play lab & café

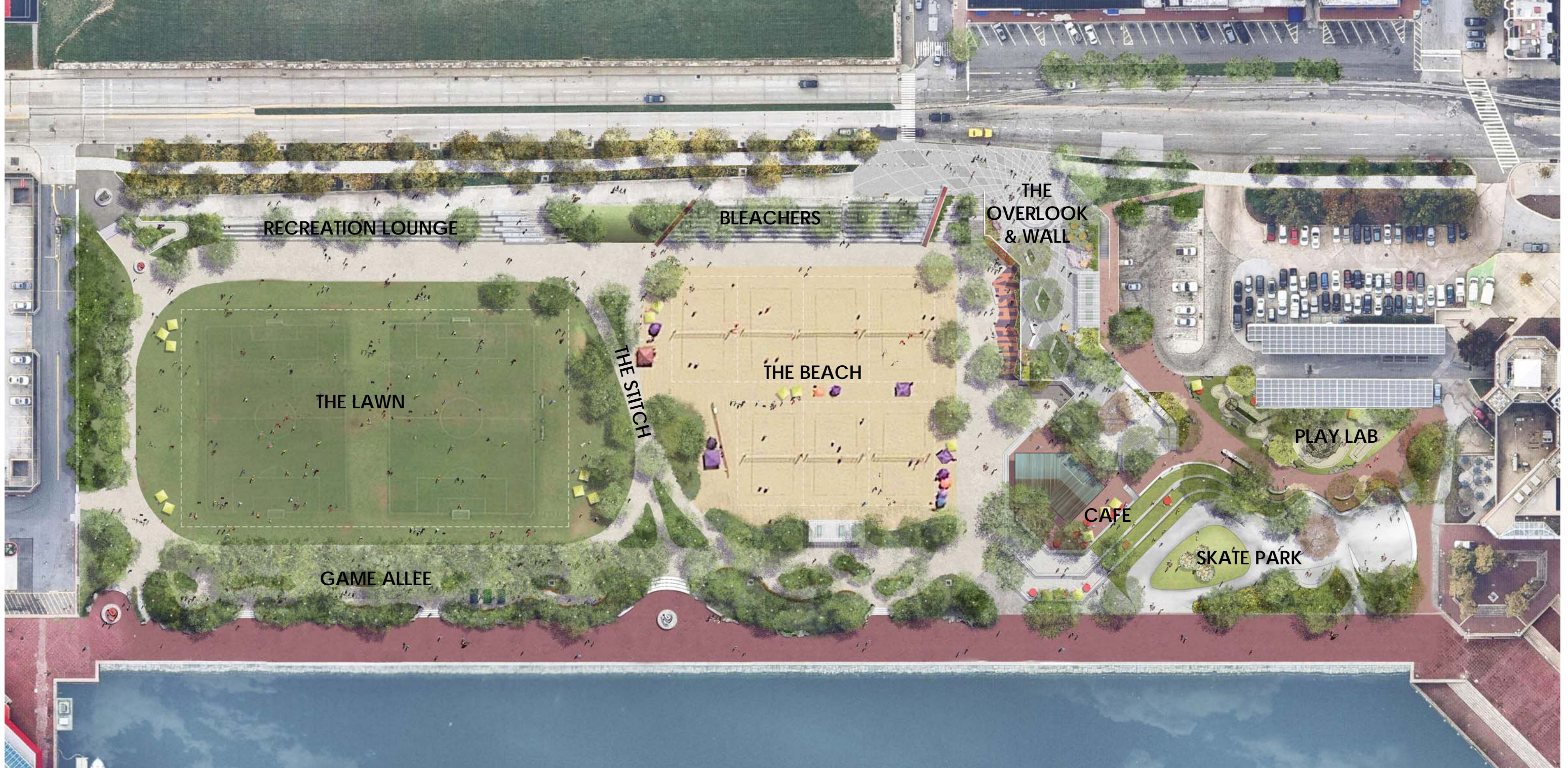
FEASIBILITY & OVERALL VISION

- Concern with feasibility of proposed design considering limited budget and its ability to contribute to the broader vision of the Inner Harbor as outlined in previous Master Plans
- Develop proposed design further in consideration with broader vision for Inner Harbor area

REVISION AREAS



REVISED SITE PLAN



BLEACHERS & S.E. ENTRANCE

Previous



BLEACHERS

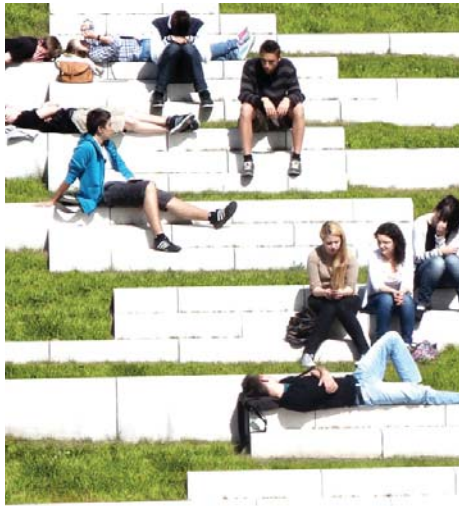
Previous



Revised



BLEACHERS



PROMENADE & GAME ALLEE

Previous



PROMENADE & GAME ALLEE

Revised



** Trees removed for clarity*

PROMENADE & GAME ALLEE

Previous



Revised



PROMENADE & GAME ALLEE

Revised



PROMENADE & GAME ALLEE



THE OVERLOOK

Previous



THE OVERLOOK

Previous



Revised



THE WALL



THE WALL



SKATE PARK & PLAY LAB Previous



RASH FIELD
» P R E S S P L A Y

POST-UDARP REVISIONS

UDARP DISCUSSION 2 // June 16, 2016



SKATE PARK & PLAY LAB

Previous



Revised



SKATE PARK & PAVILION

Revised



RASH FIELD

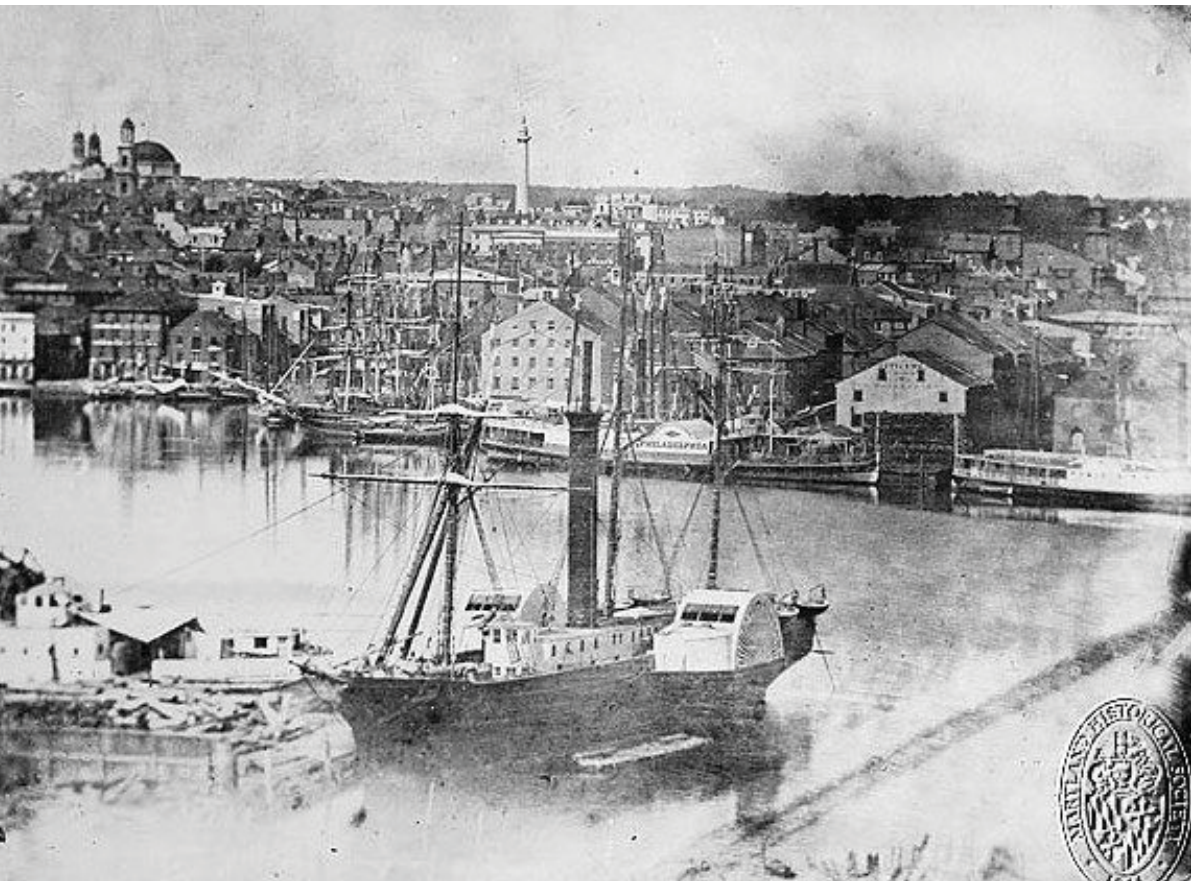
POST-UDARP REVISIONS

» P R E S S P L A Y

UDARP DISCUSSION 2 // June 16, 2016



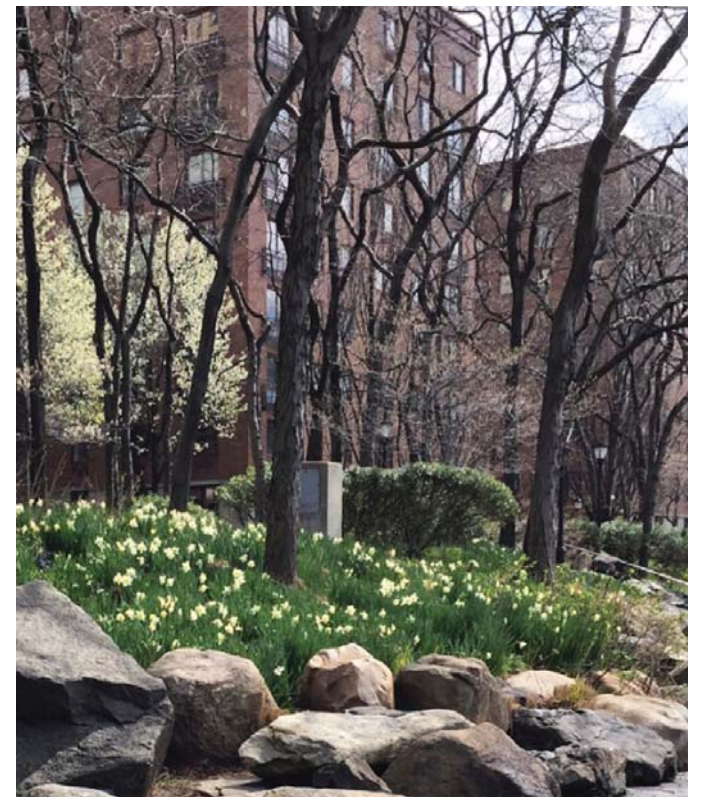
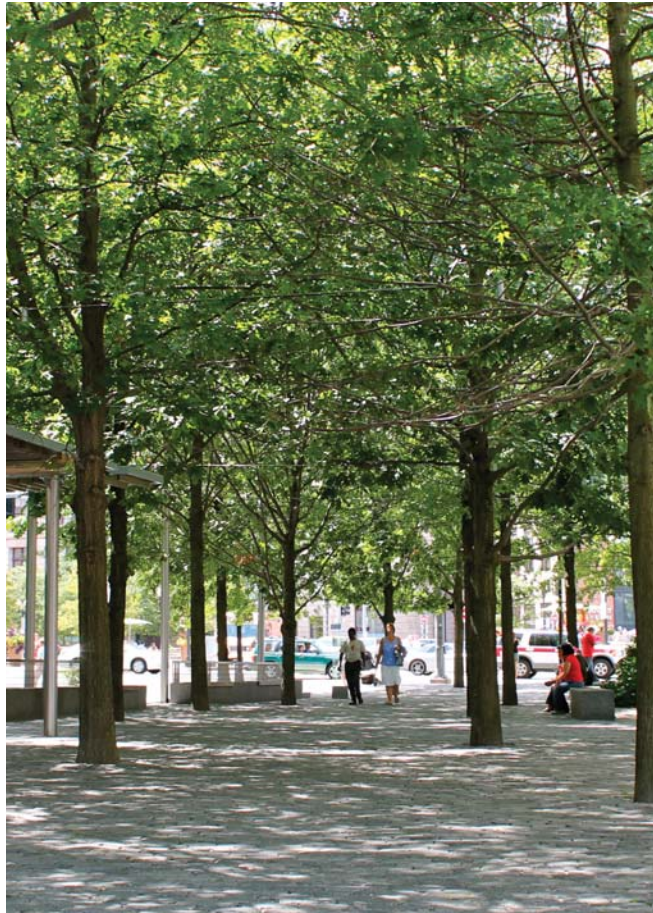
THE PAVILION



SITE AMENITIES

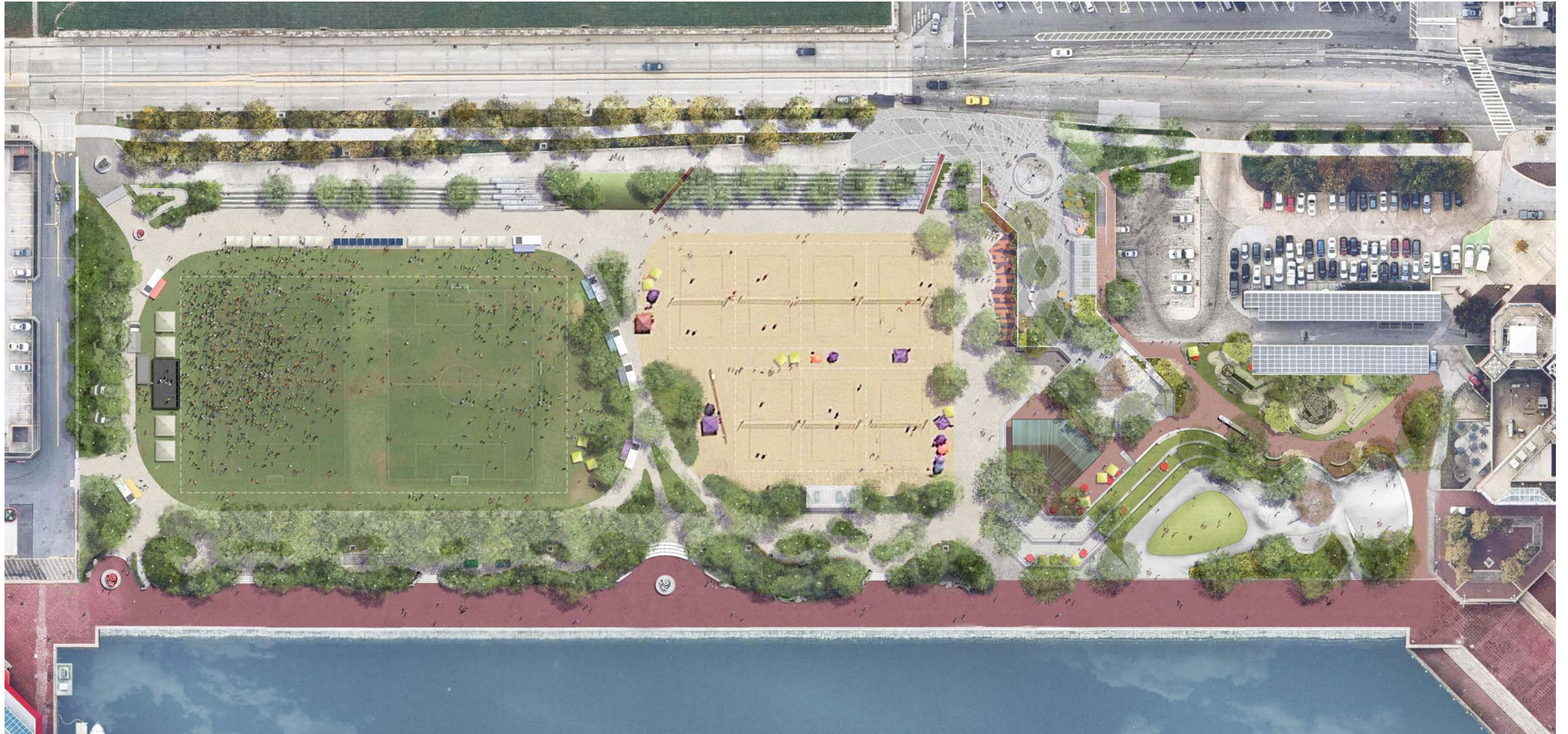


PLANTING



PROGRAMMING

Festivals



PROGRAMMING

Sports



- Parks & People has partnered with Baltimore City schools to develop school-based leagues for baseball, lacrosse, soccer and volleyball.
- Since 1992, this partnership has created sports and recreational opportunities for almost 30,000 young people in Baltimore City.
- Skate Park of Baltimore estimates the city's skateboarding community to be approximately 7,500 regular skateboarders and 29,000 casual skateboarders
- Other potential recreational sports activities for Rash Field:

• Kickball	Flag Football	Volleyball
• Bocce	Kan Jam	Yoga
• Bubble Ball	Youth Soccer	Youth Lacrosse



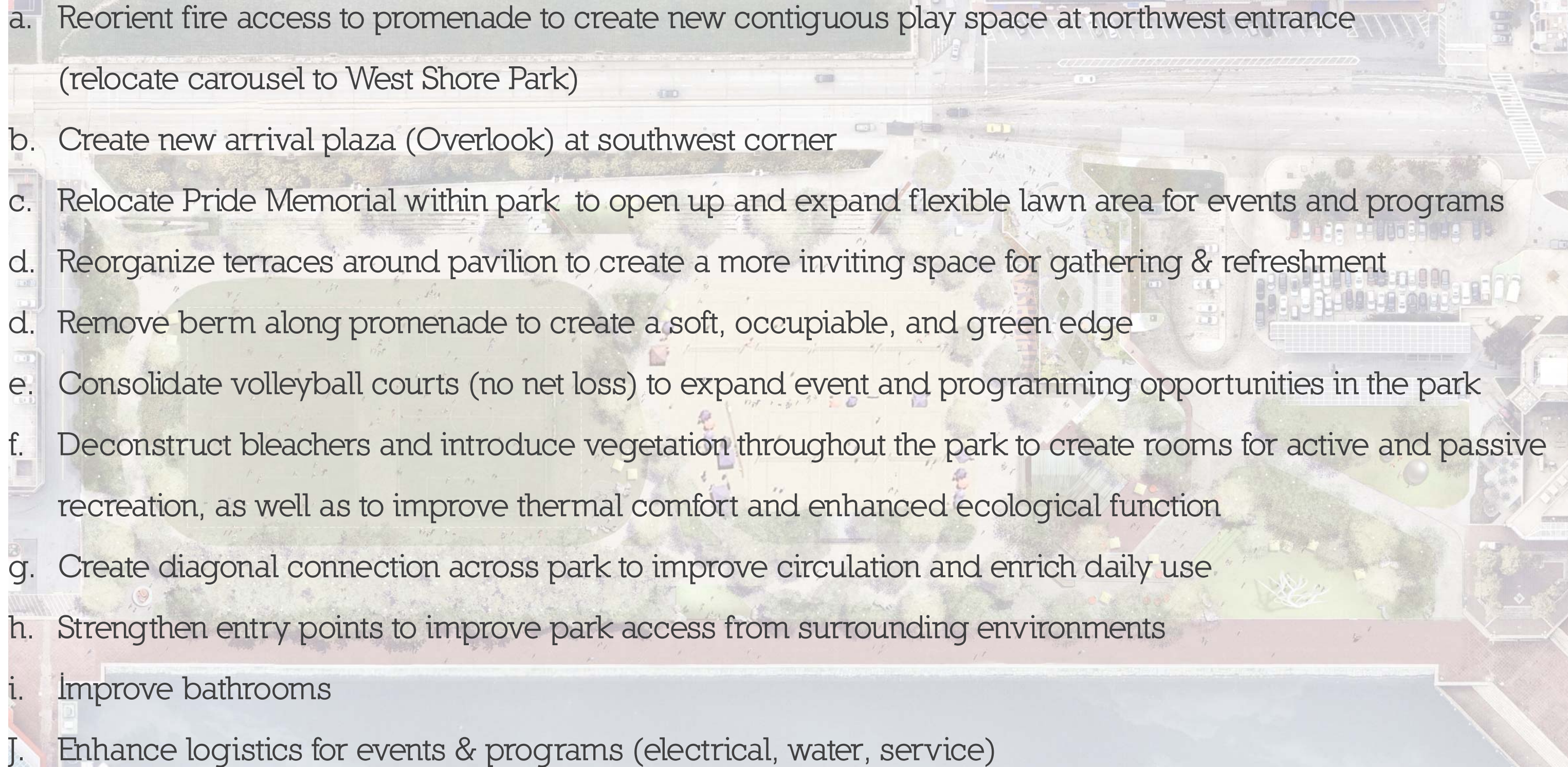
THANK YOU.



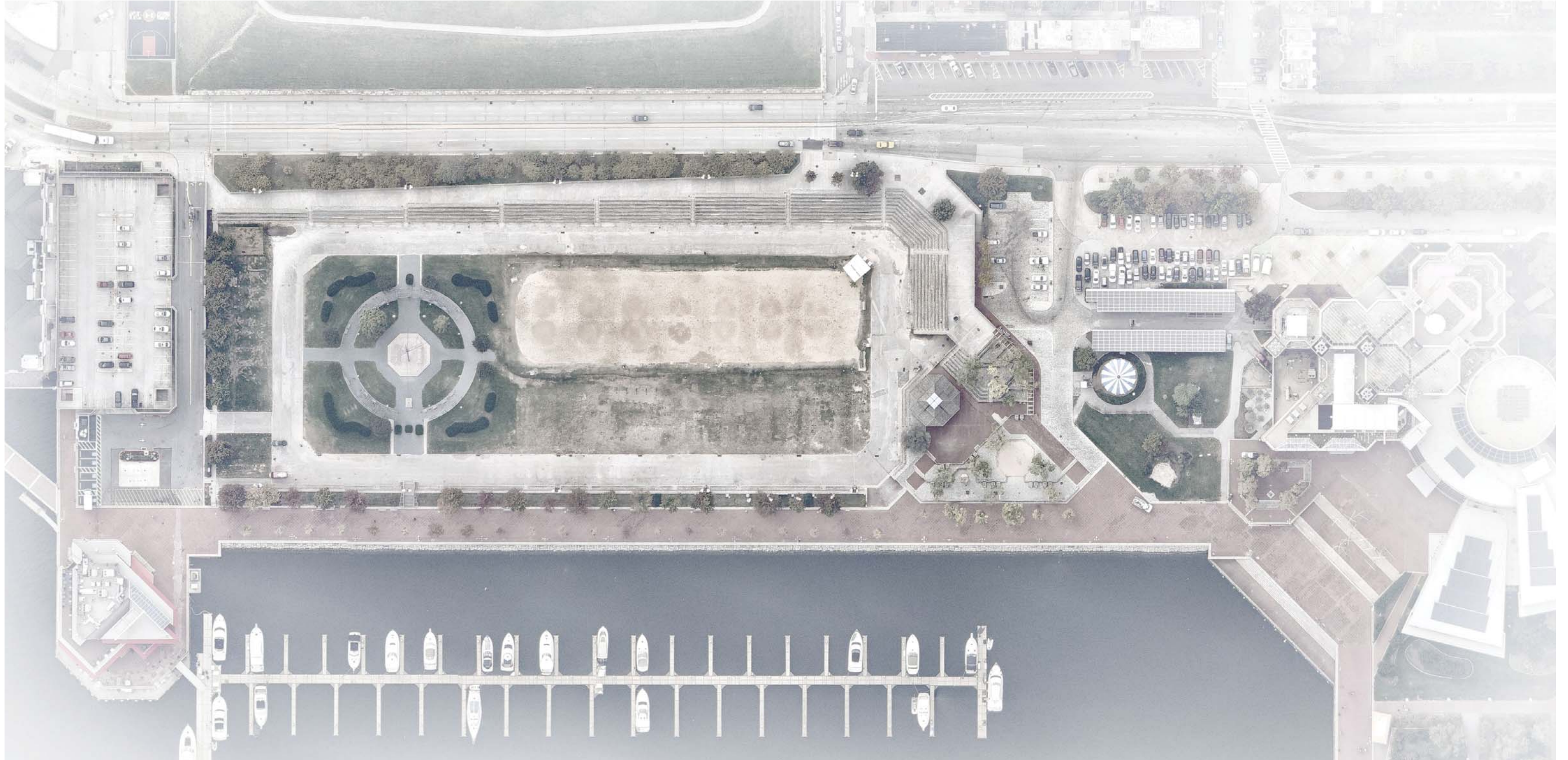
APPENDIX



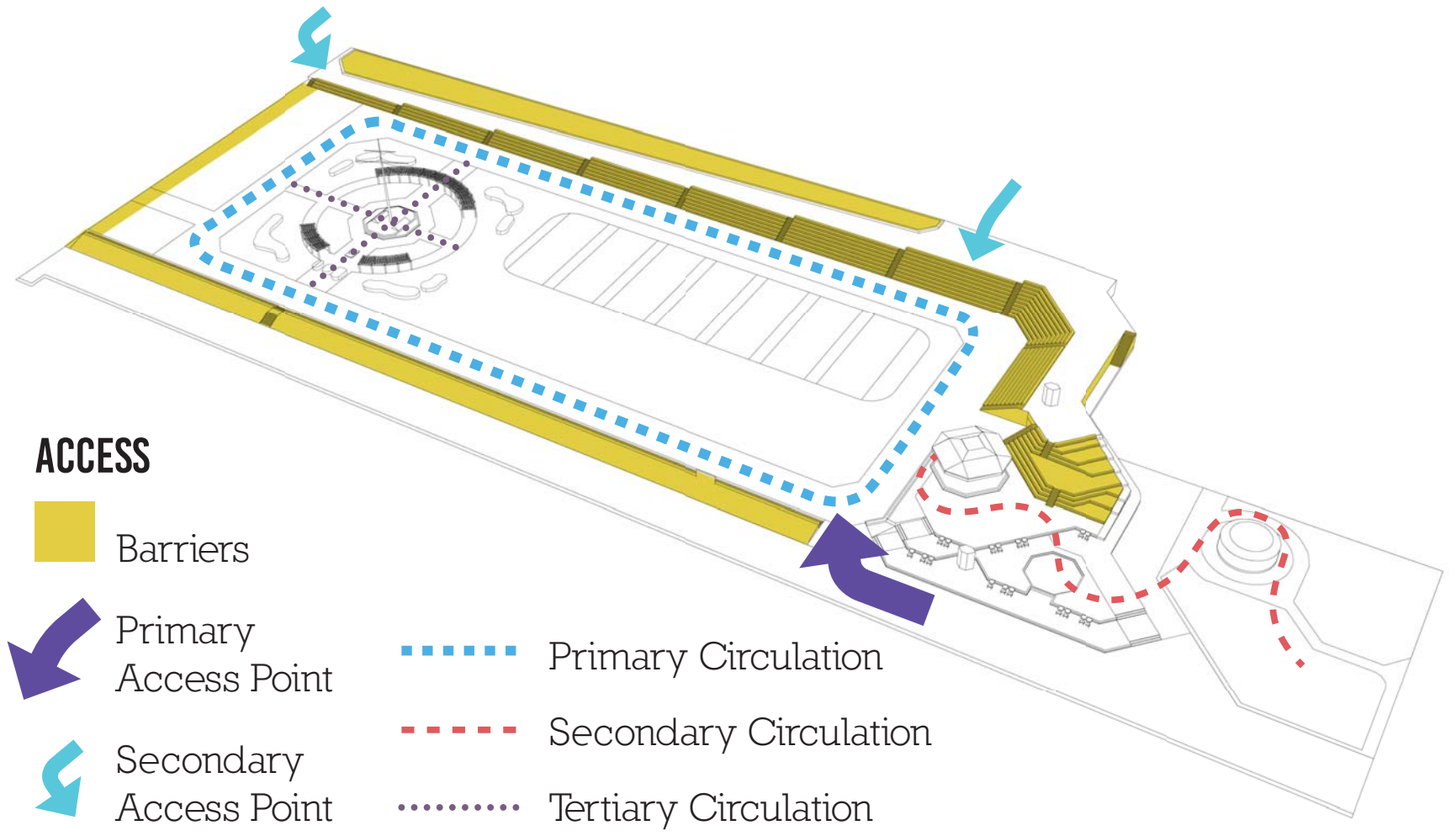
RASH FIELD: KEY MOVES

- 
- a. Reorient fire access to promenade to create new contiguous play space at northwest entrance (relocate carousel to West Shore Park)
 - b. Create new arrival plaza (Overlook) at southwest corner
 - c. Relocate Pride Memorial within park to open up and expand flexible lawn area for events and programs
 - d. Reorganize terraces around pavilion to create a more inviting space for gathering & refreshment
 - d. Remove berm along promenade to create a soft, occupiable, and green edge
 - e. Consolidate volleyball courts (no net loss) to expand event and programming opportunities in the park
 - f. Deconstruct bleachers and introduce vegetation throughout the park to create rooms for active and passive recreation, as well as to improve thermal comfort and enhanced ecological function
 - g. Create diagonal connection across park to improve circulation and enrich daily use
 - h. Strengthen entry points to improve park access from surrounding environments
 - i. Improve bathrooms
 - J. Enhance logistics for events & programs (electrical, water, service)

EXISTING CONDITIONS



ACCESS/BARRIERS



ACCESS



Barriers



Primary Access Point



Secondary Access Point



Primary Circulation

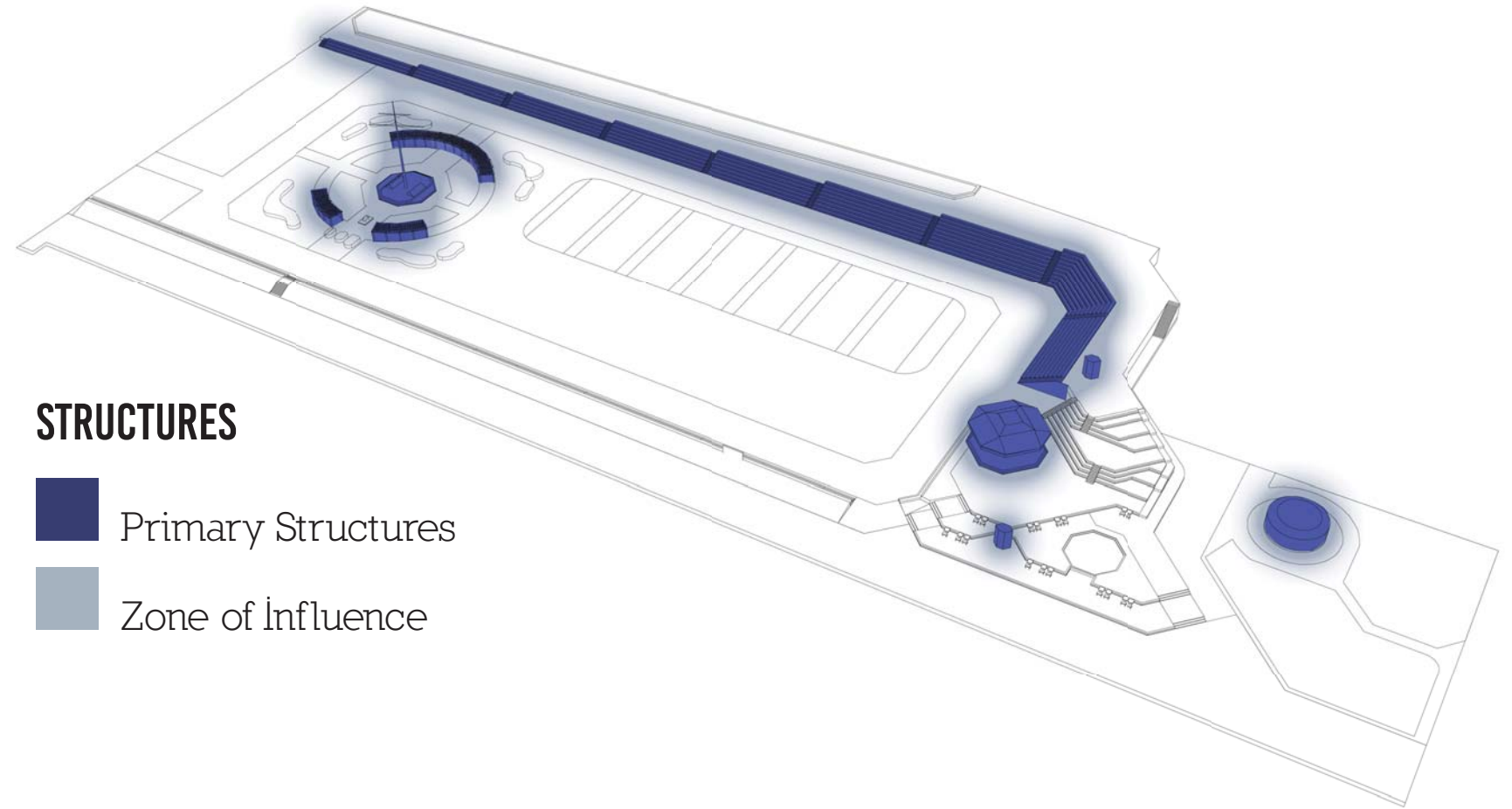


Secondary Circulation



Tertiary Circulation

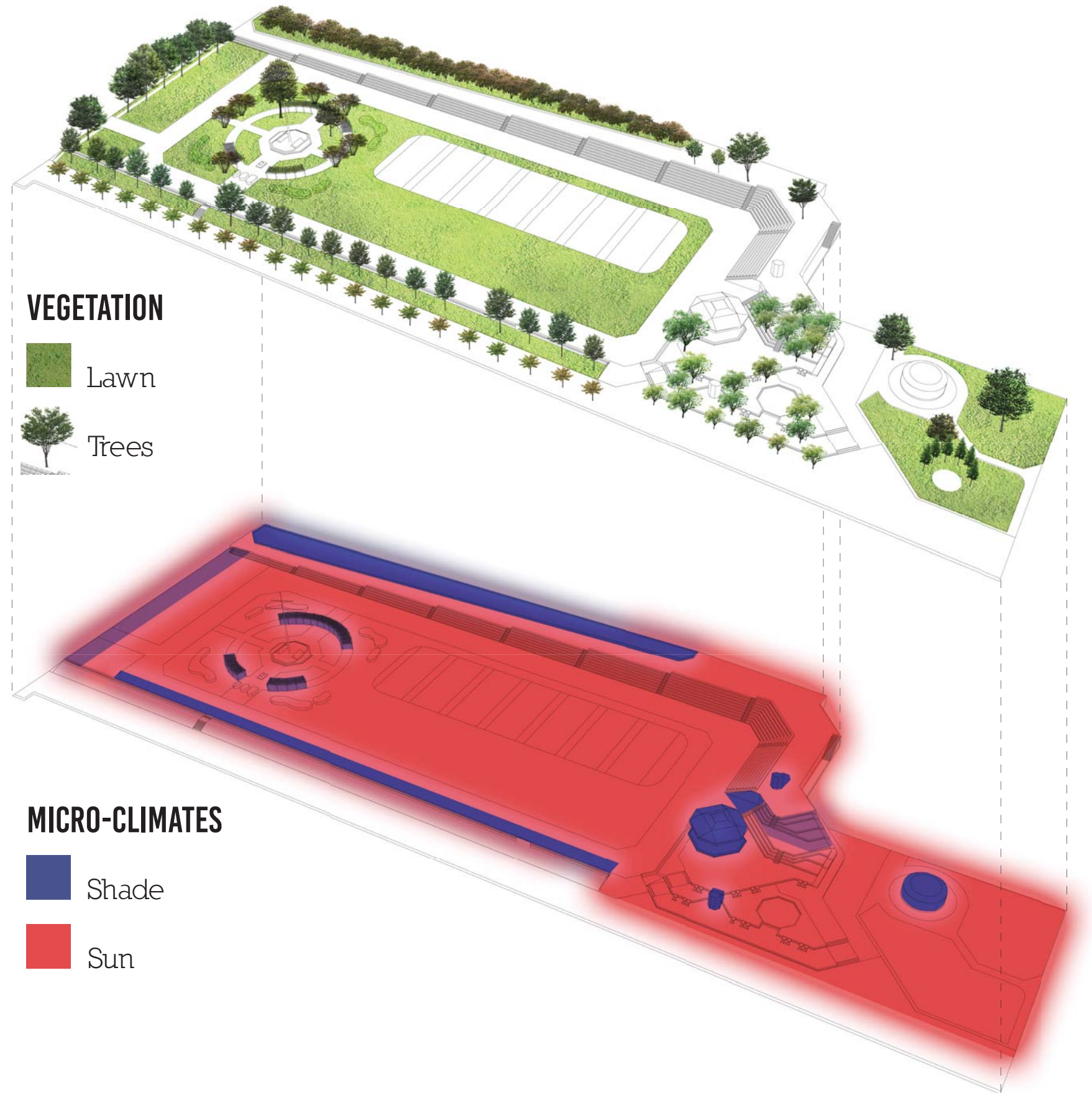
STRUCTURES



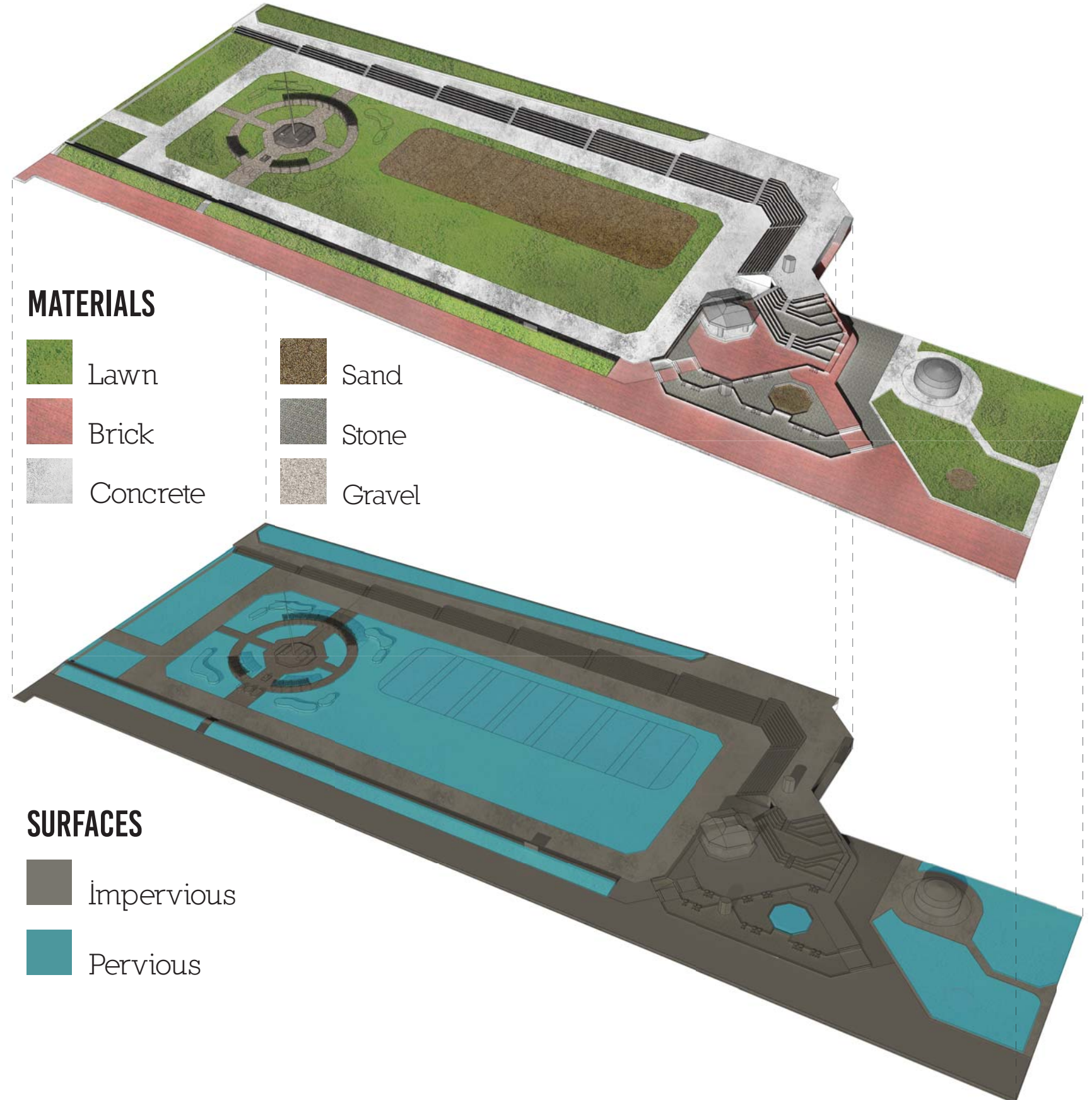
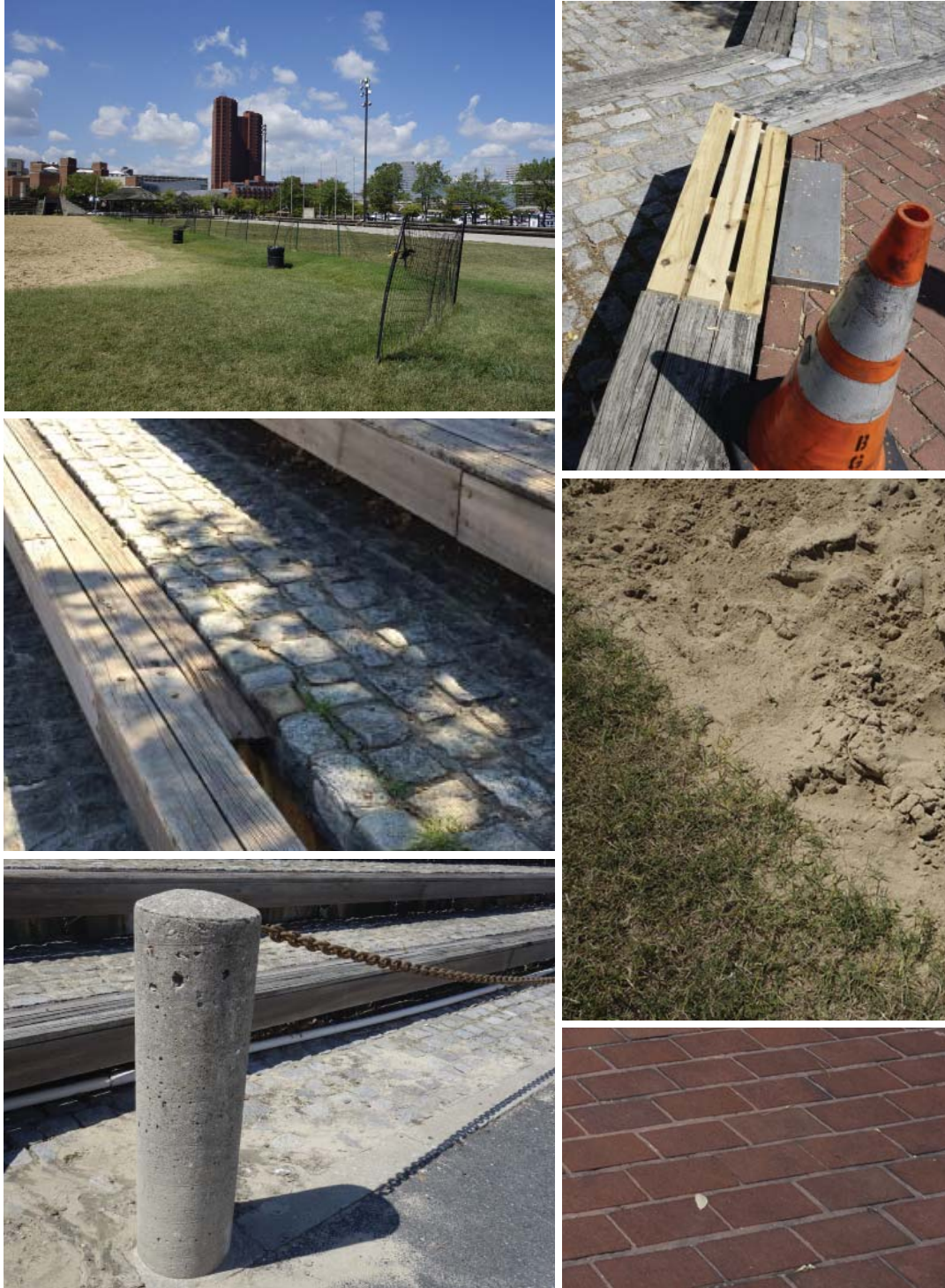
STRUCTURES

- Primary Structures
- Zone of Influence

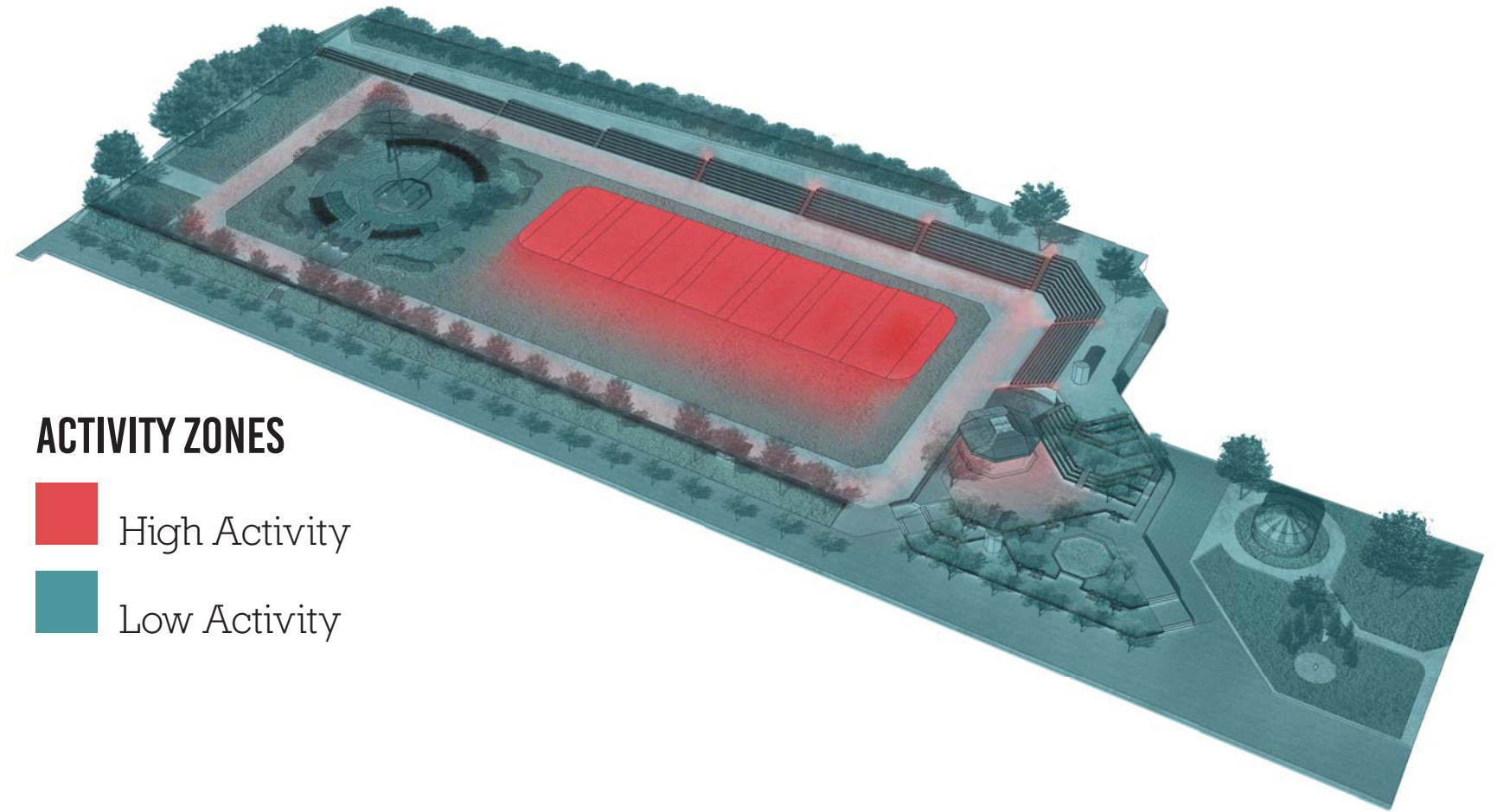
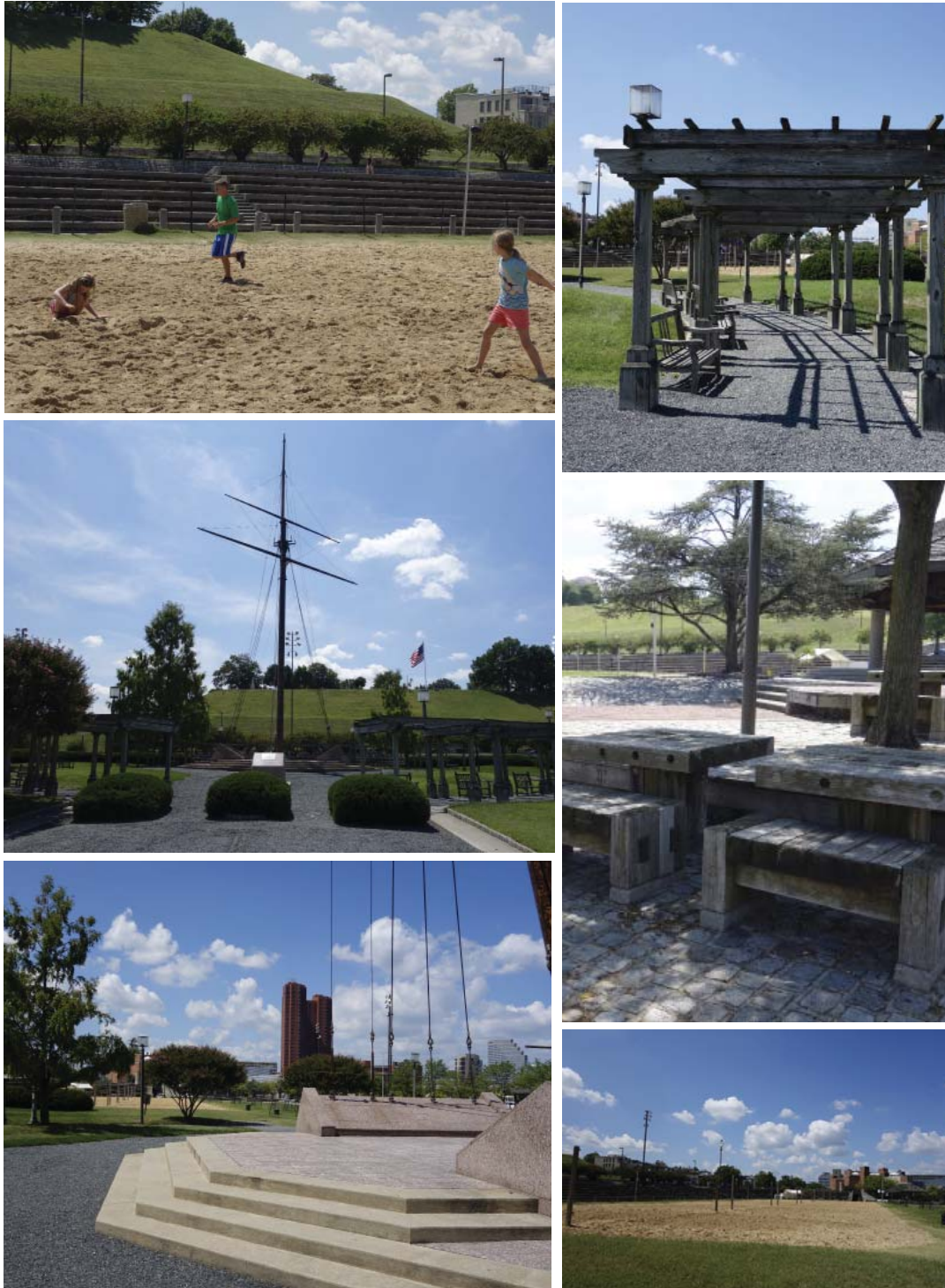
VEGETATION & MICRO-CLIMATES



MATERIALS & SURFACES



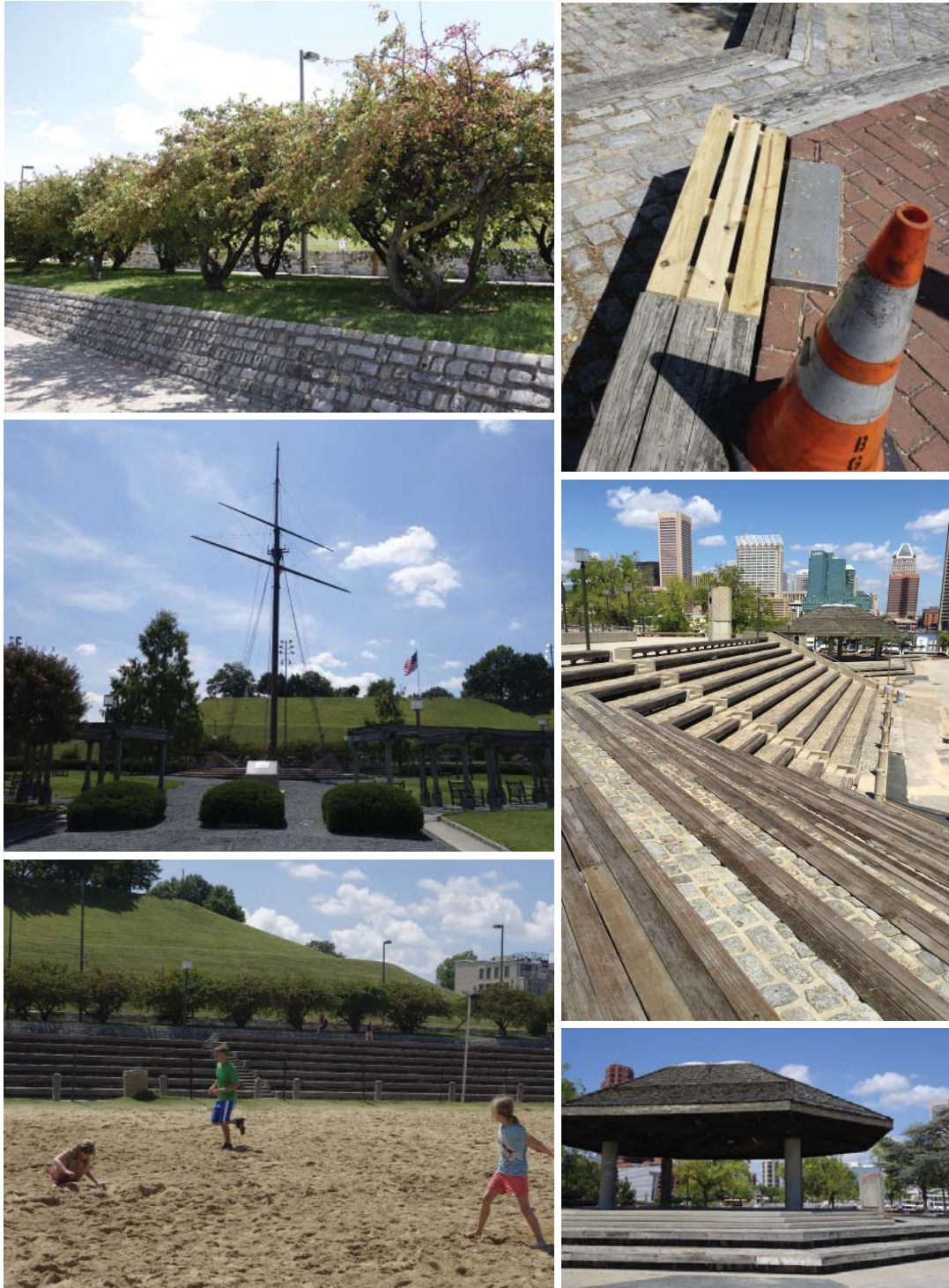
ACTIVITY ZONES



ACTIVITY ZONES

-  High Activity
-  Low Activity

SITE CHALLENGES

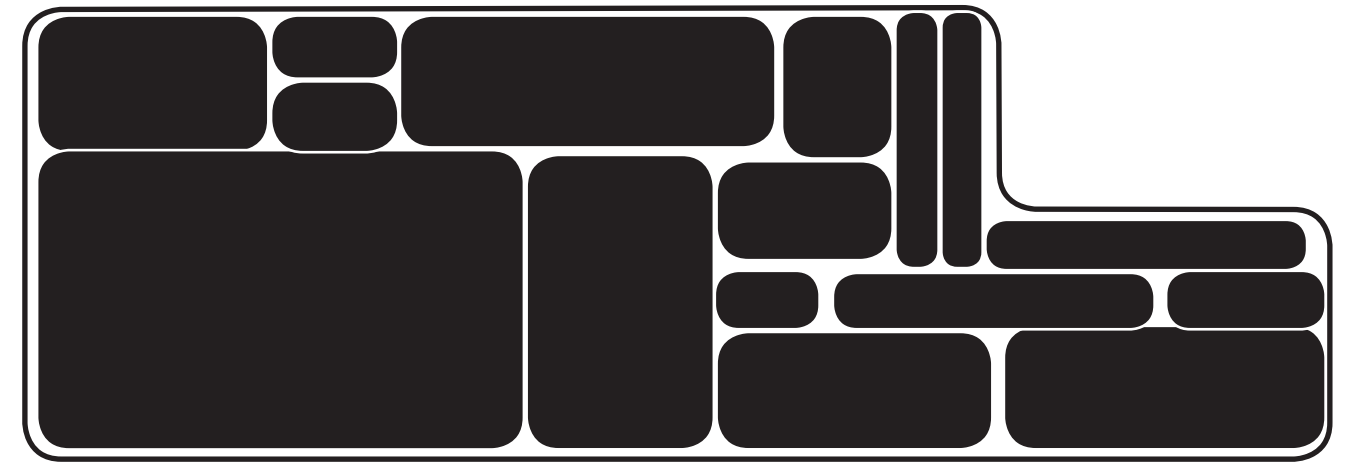


DESIGN INTENT & CONCEPT PLANS

DESIGN: DIVERSIFY THE EXPERIENCE

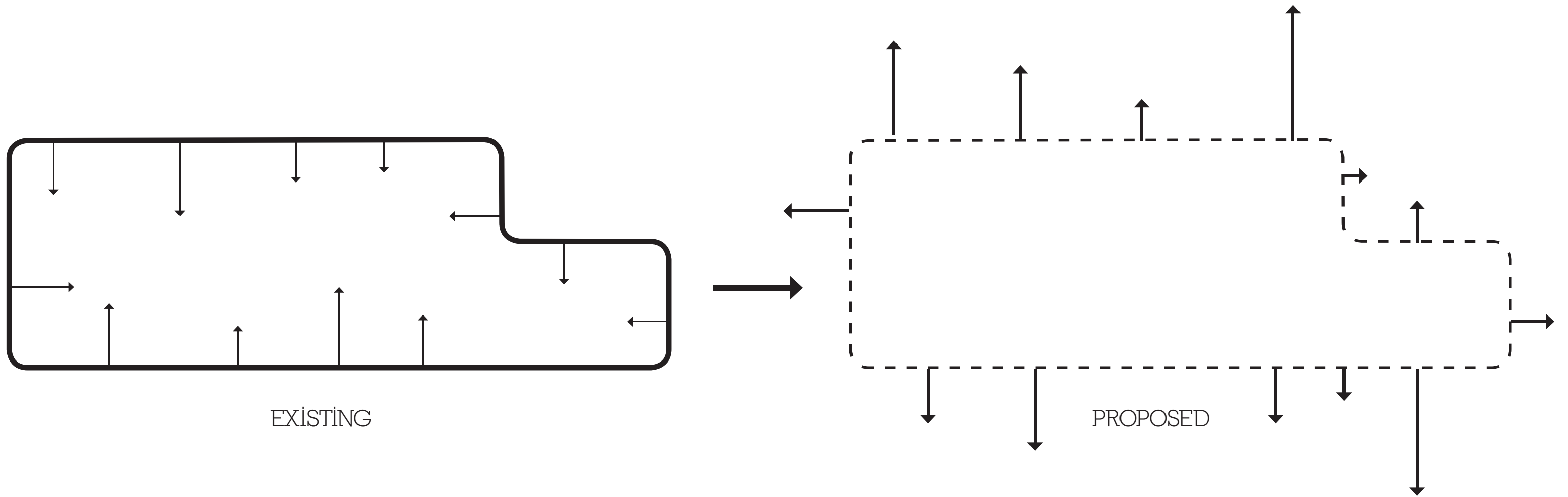


EXISTING

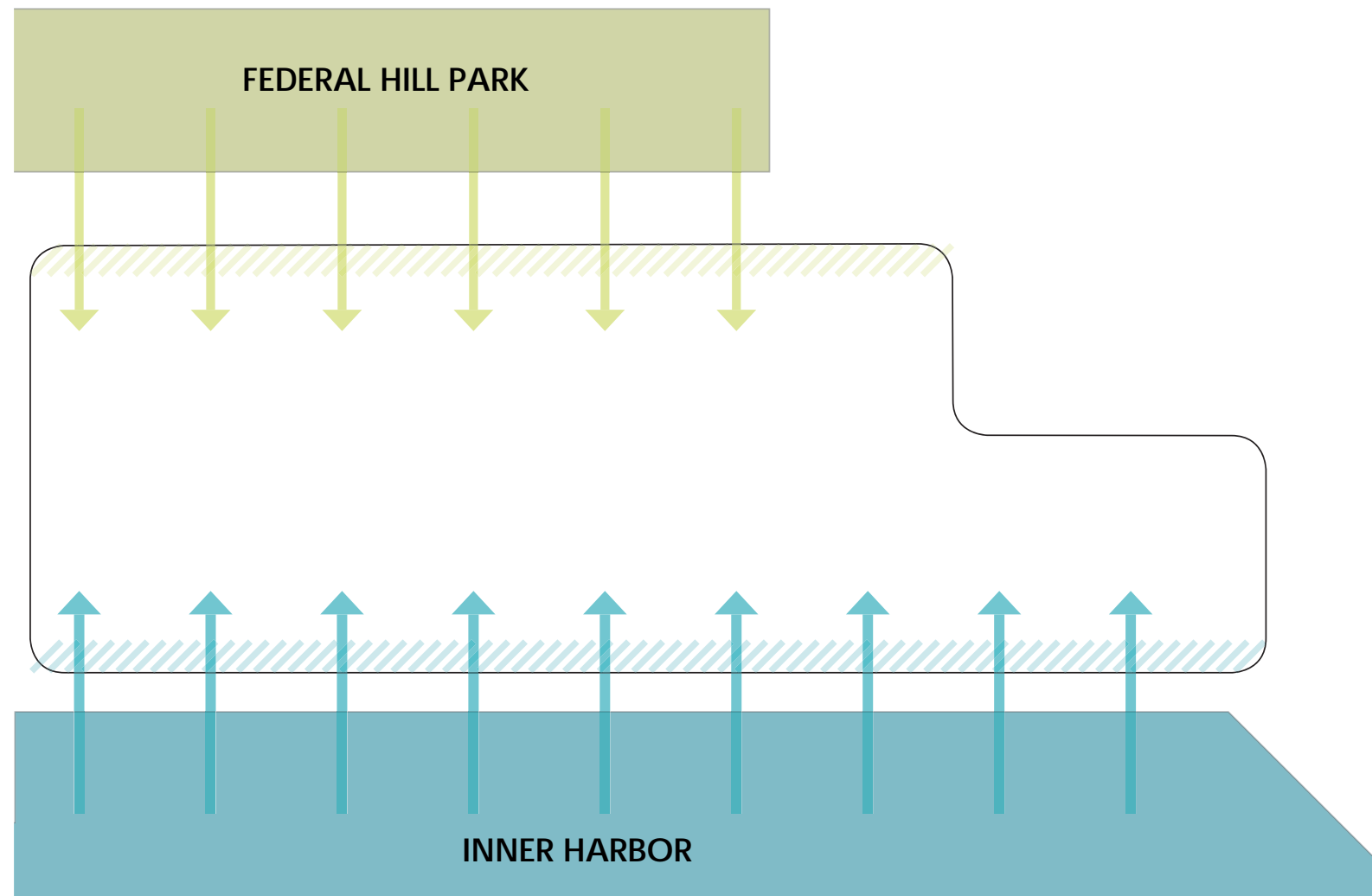


PROPOSED

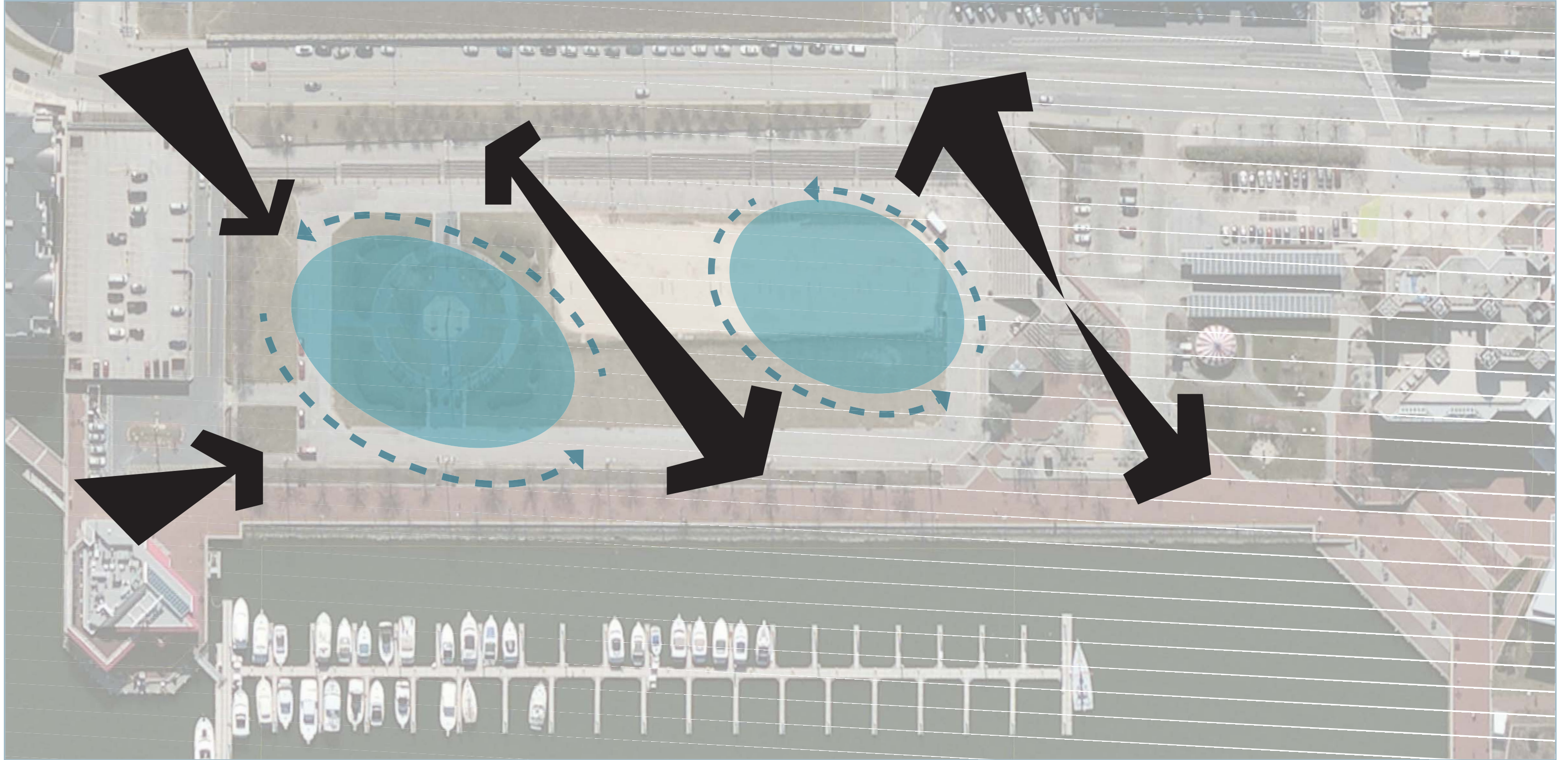
DESIGN: CONNECT THE PARK



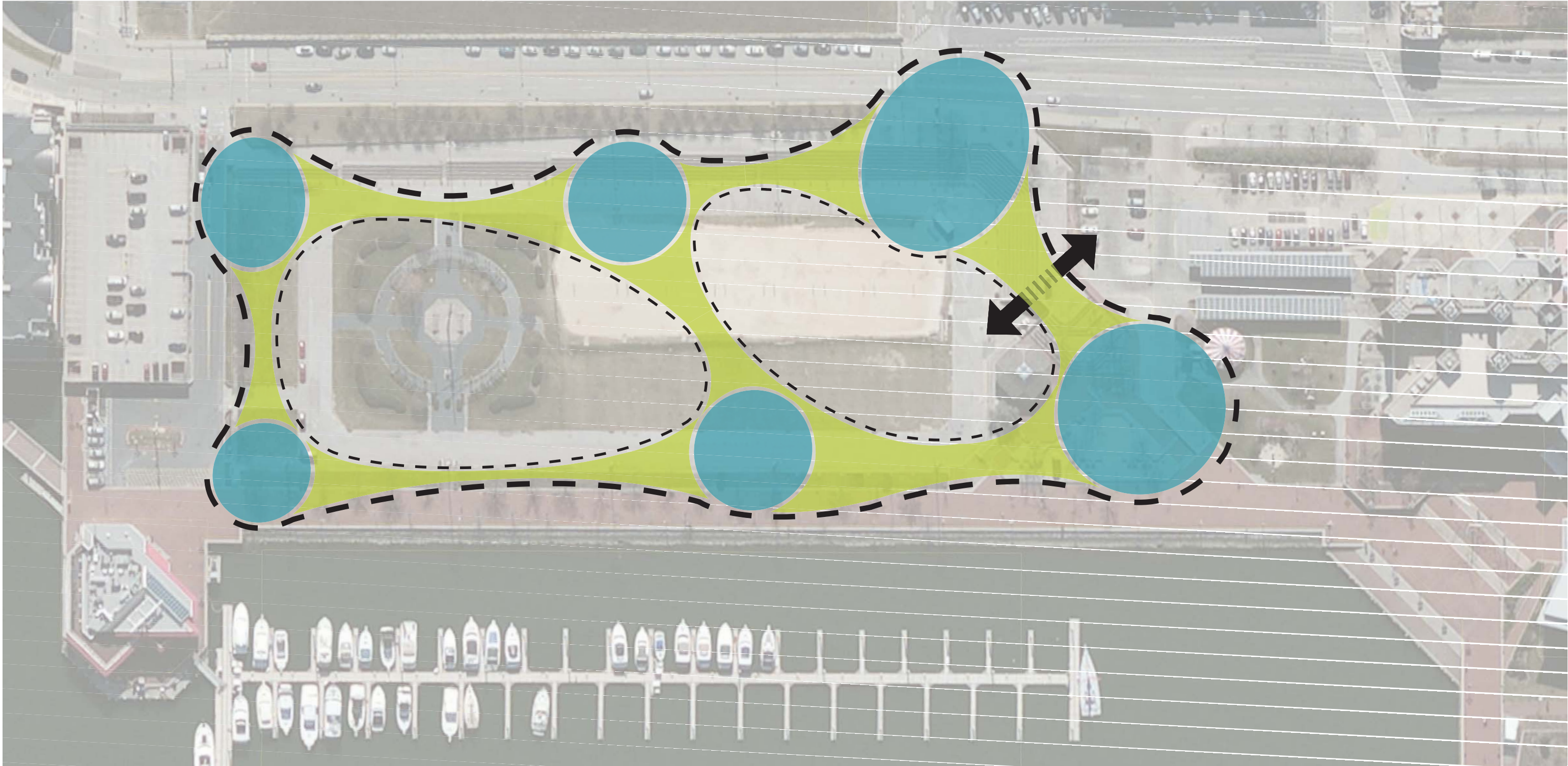
DESIGN: BRING NATURE IN



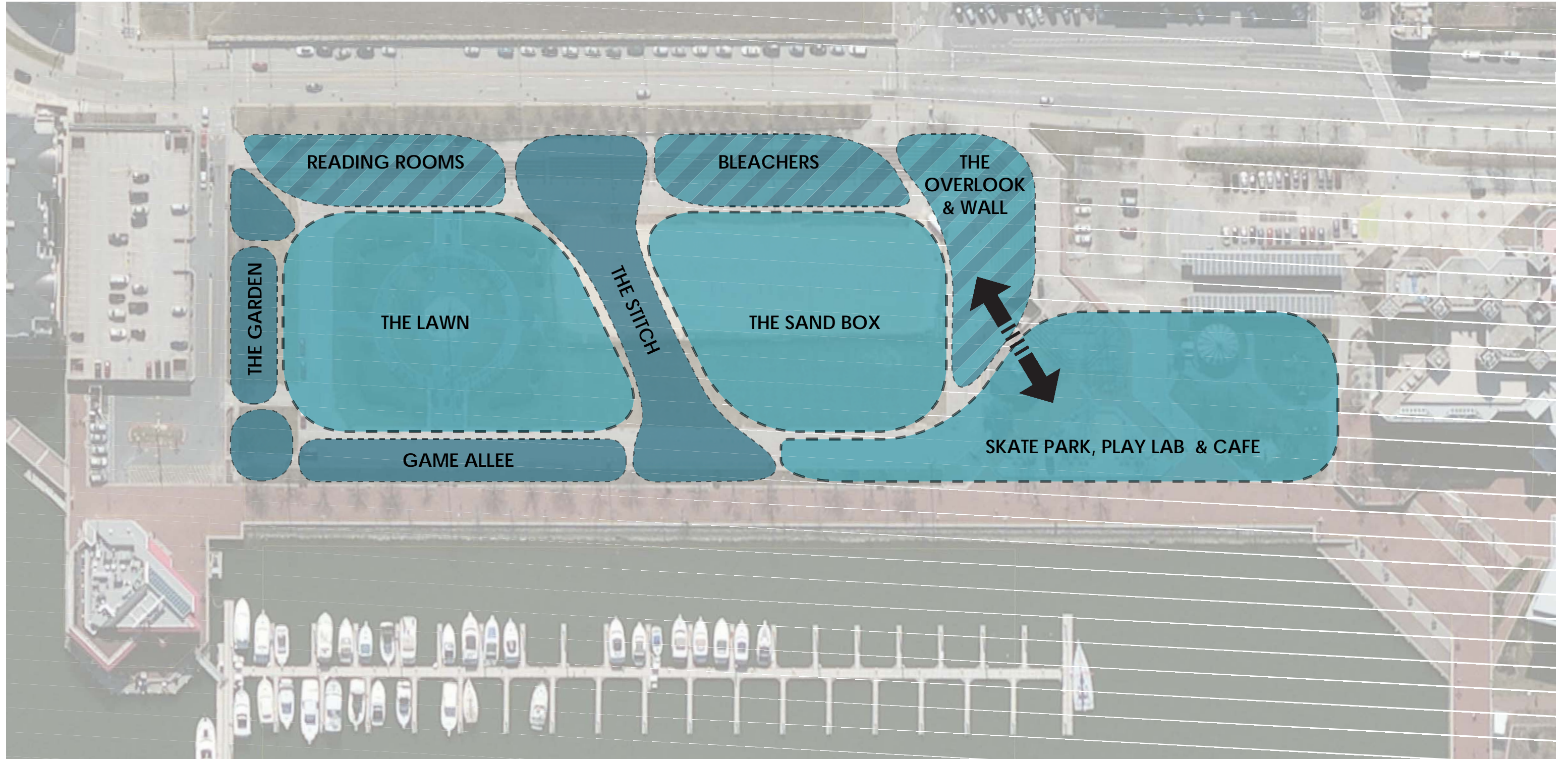
CONNECTION



ARRIVAL



ENGAGEMENT



THE LAWN



THE BEACH



PROMENADE & GAME ALLEE



SOUTHEAST ENTRY

