

# VILLAGE CENTER AT STADIUM PLACE



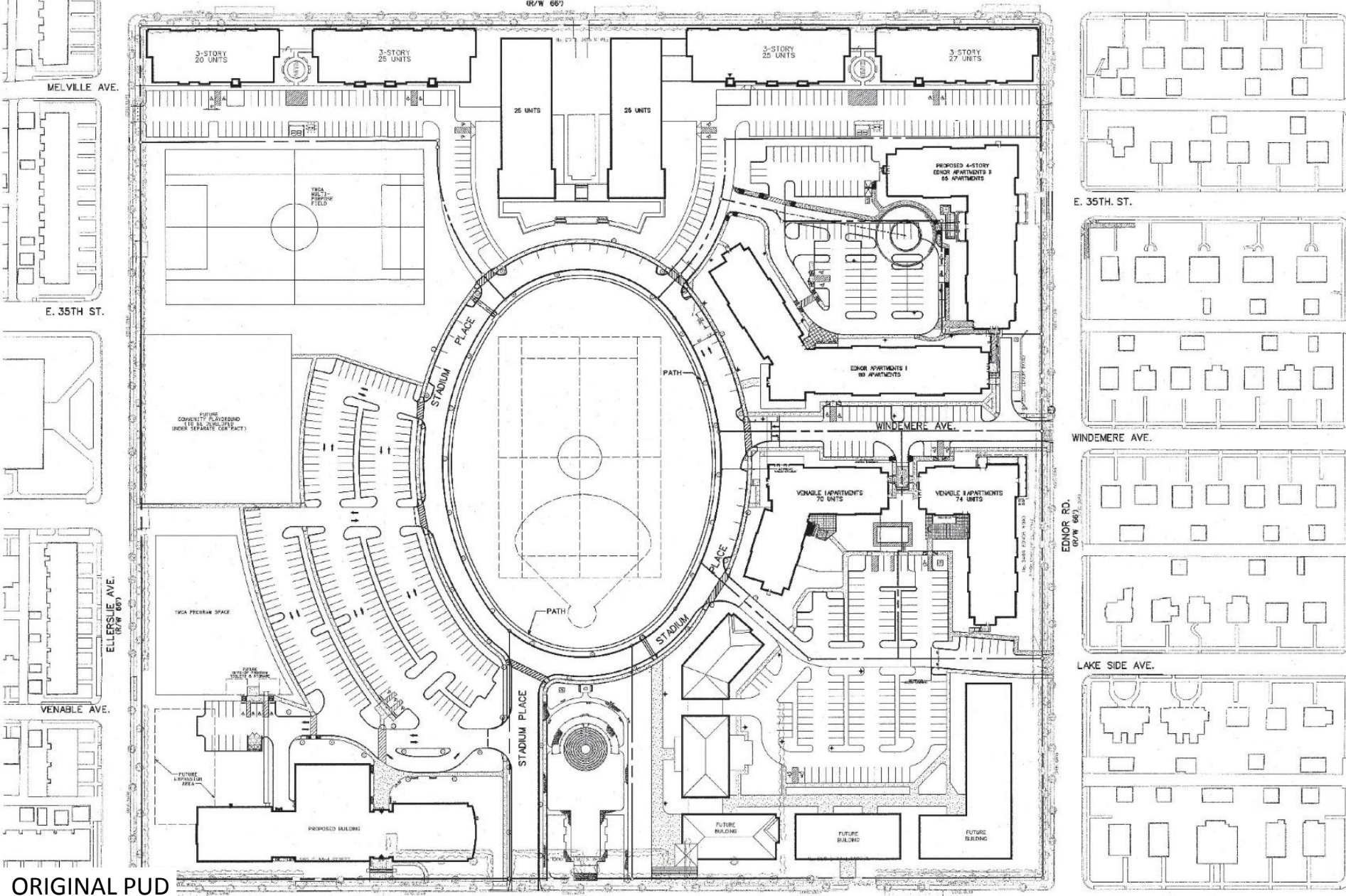
MARKS, THOMAS ARCHITECTS



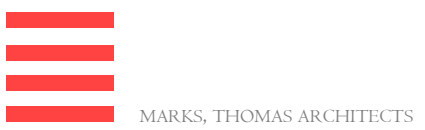


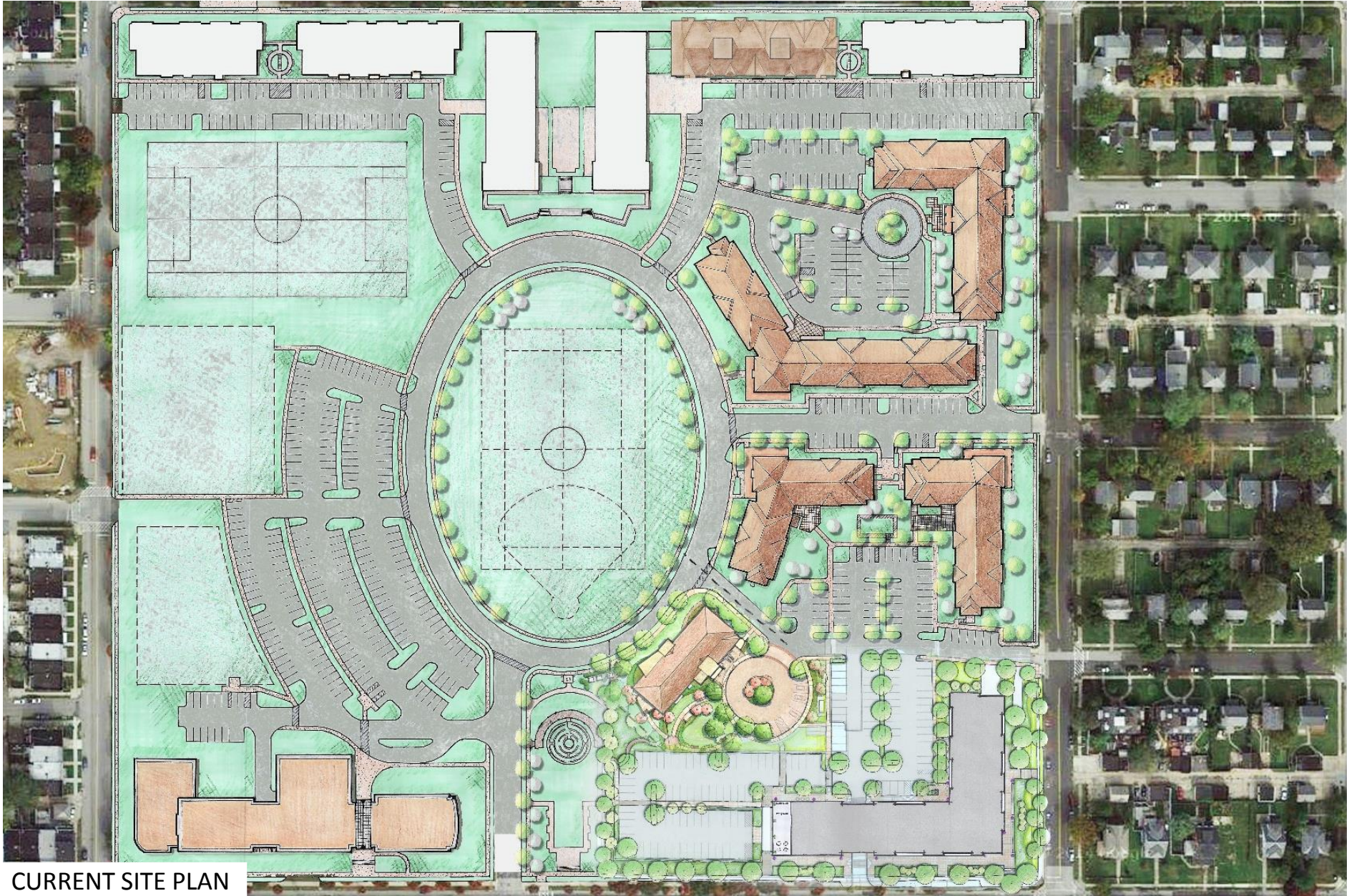
NEIGHBORHOOD CONTEXT



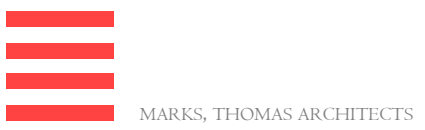


ORIGINAL PUD





CURRENT SITE PLAN





STREET MASSING 33 rd. STREET

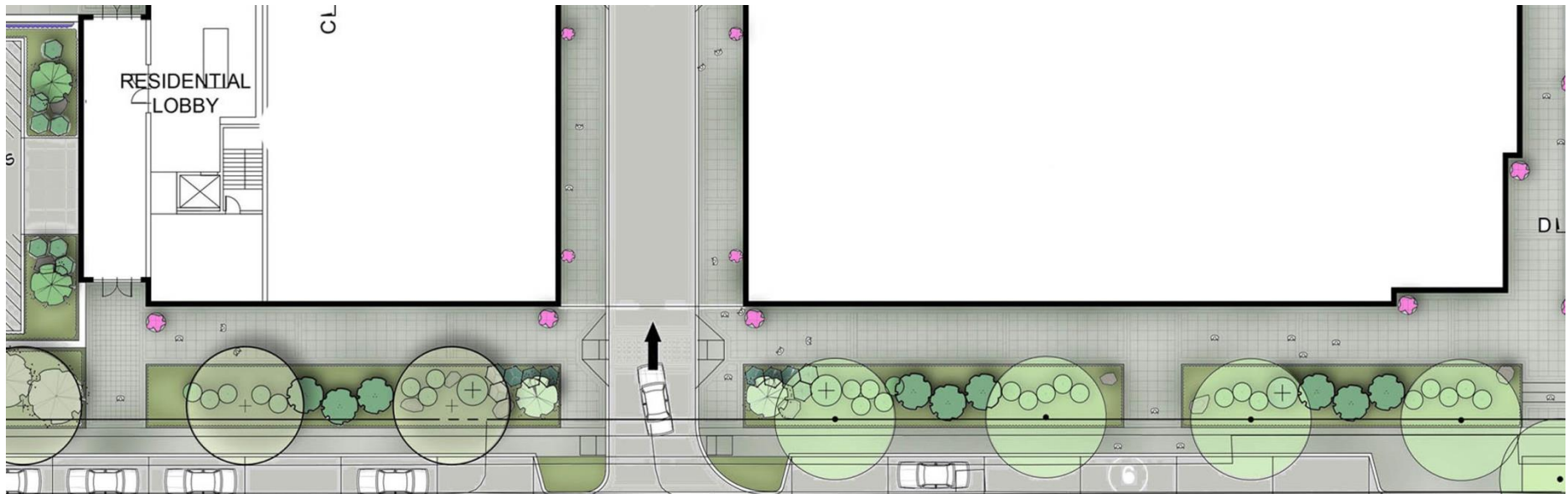


SITE MASSING AREAL



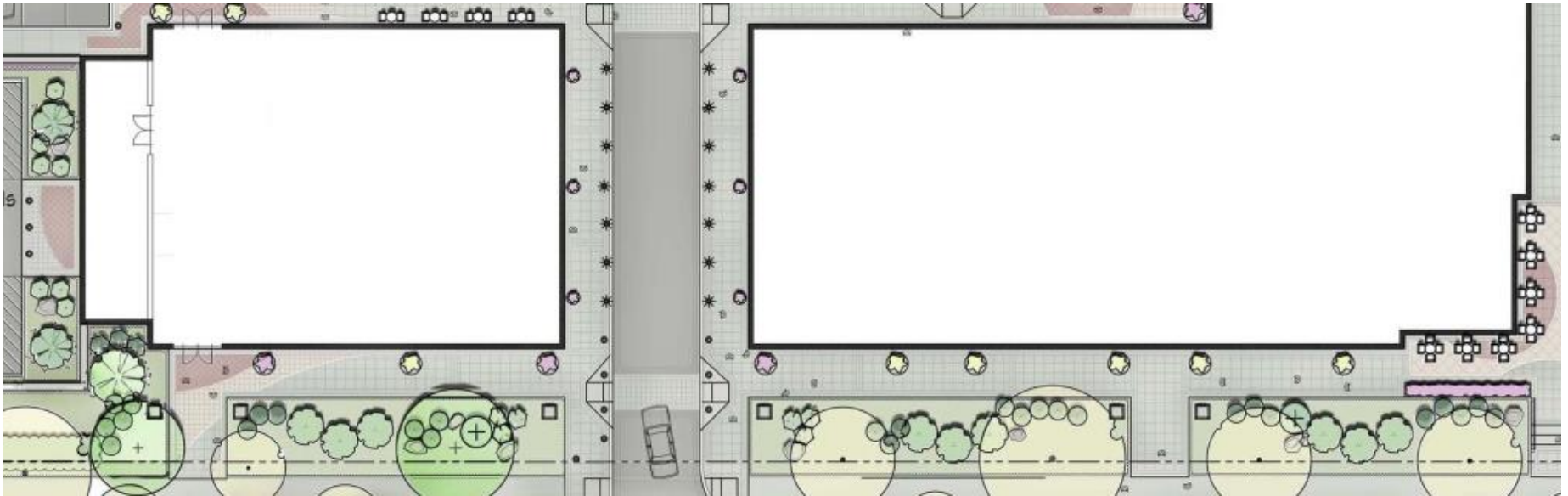


SOUTH ELEVATION - PREVIOUS





SOUTH ELEVATION - CURRENT

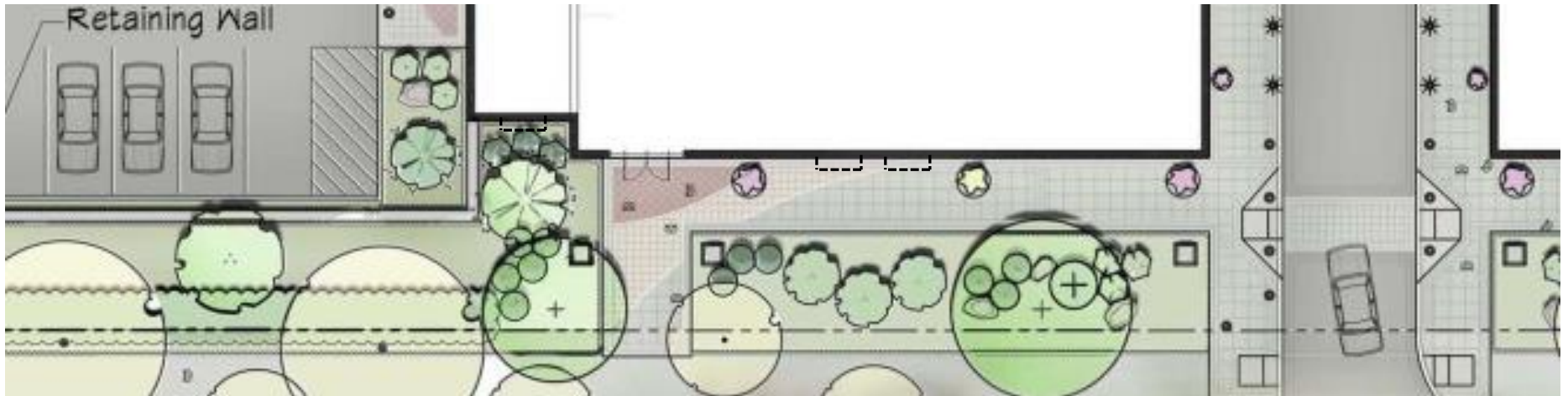


MARKS, THOMAS ARCHITECTS





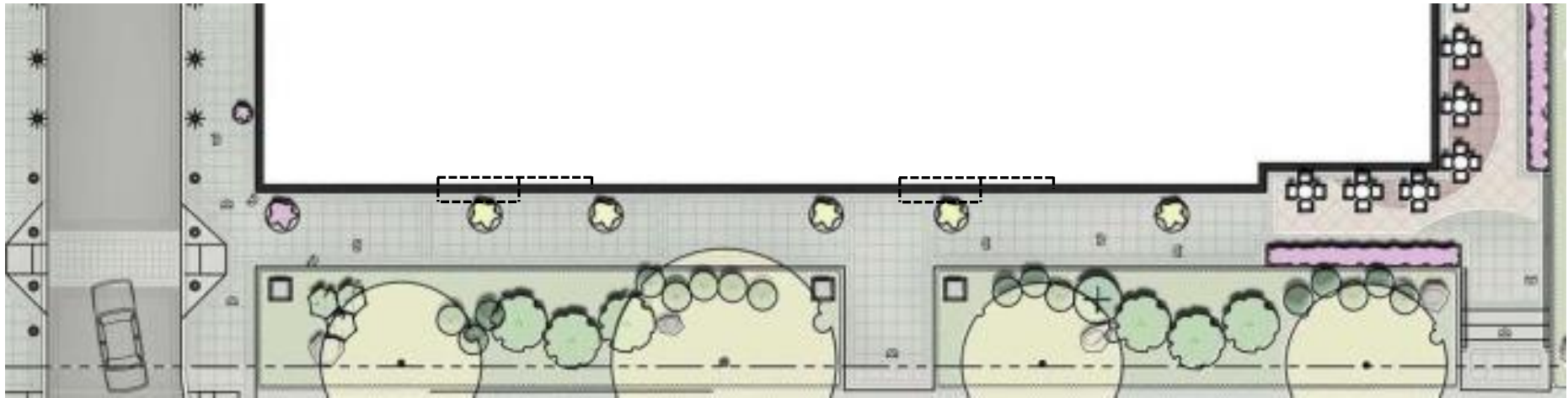
ENLARGED SOUTH ELEVATION – ENLARGED BUILDING A







ENLARGED SOUTH ELEVATION – BUILDING B

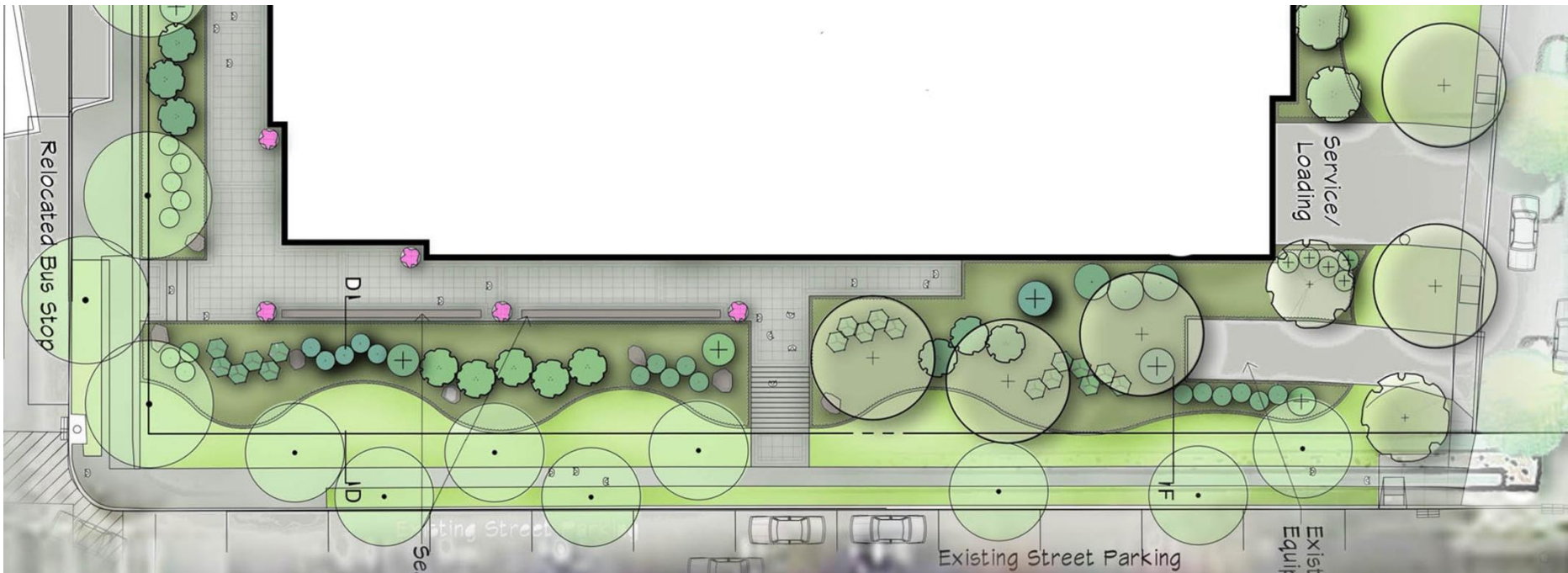


MARKS, THOMAS ARCHITECTS





EAST ELEVATION – PREVIOUS (EDNOR RD.)

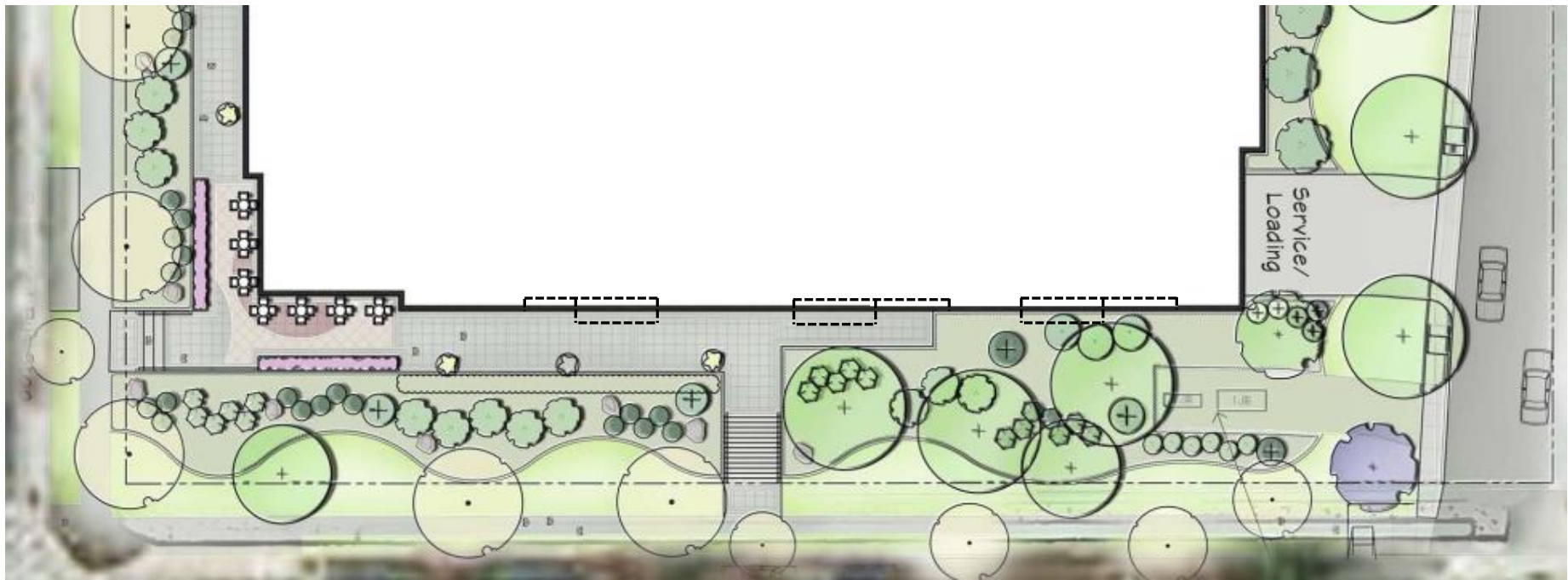


MARKS, THOMAS ARCHITECTS





EAST ELEVATION – CURRENT (EDNOR RD.)

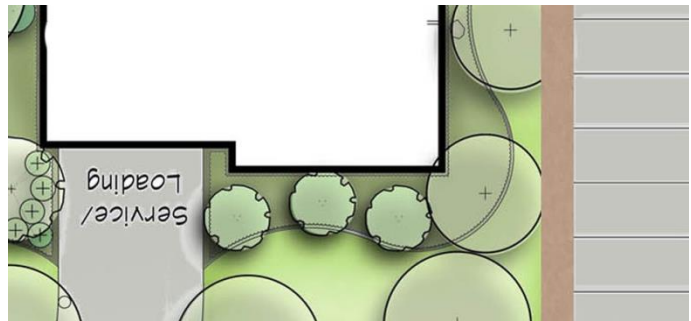
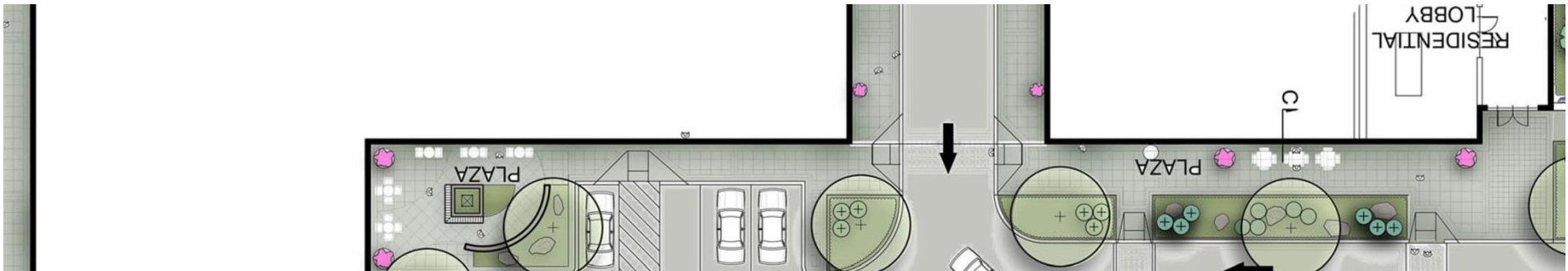


MARKS, THOMAS ARCHITECTS





NORTH ELEVATION - PREVIOUS

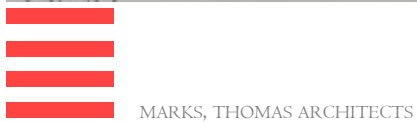
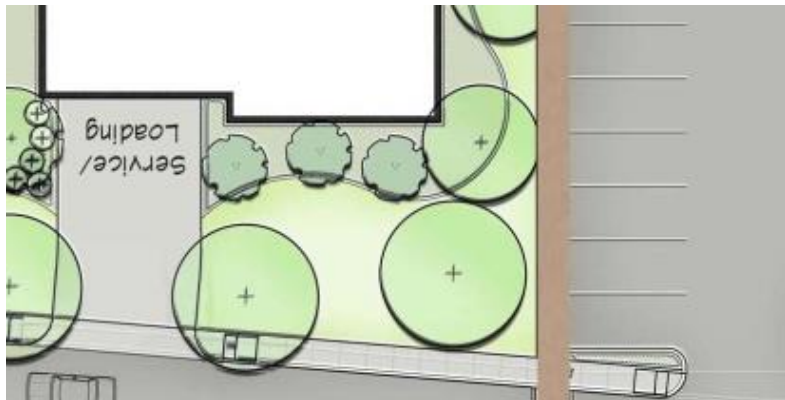
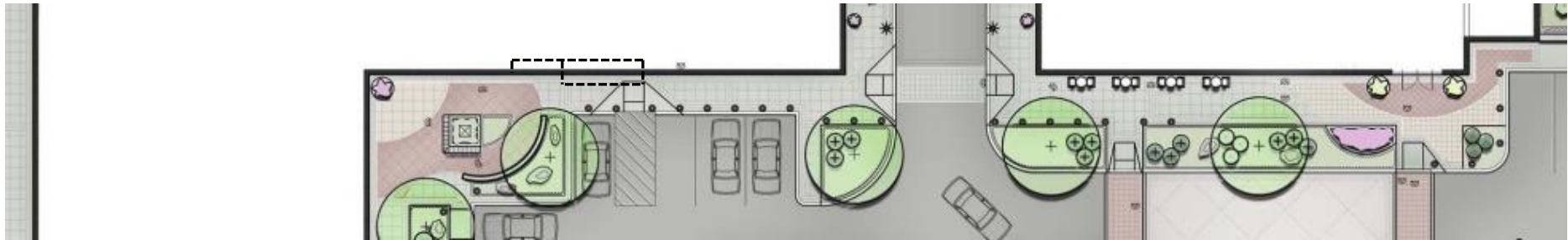


MARKS, THOMAS ARCHITECTS



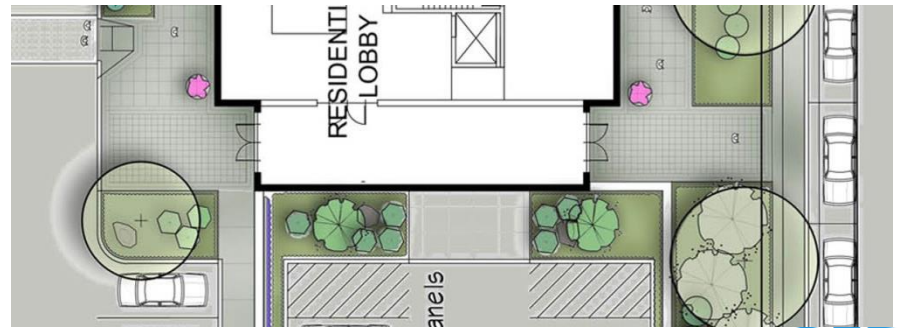
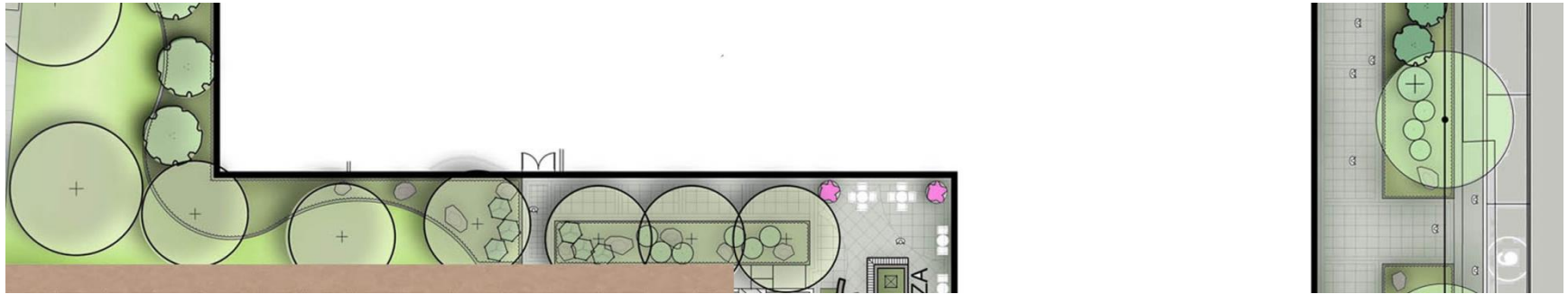


NORTH ELEVATION - CURRENT



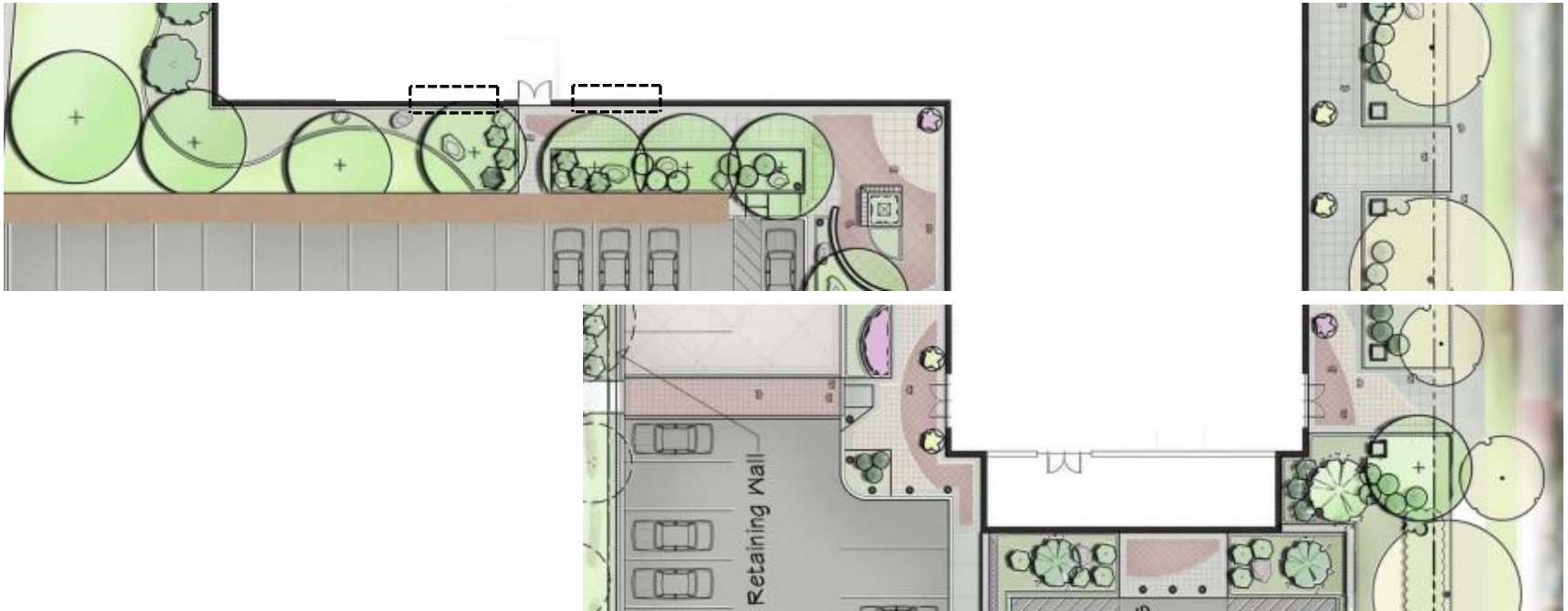


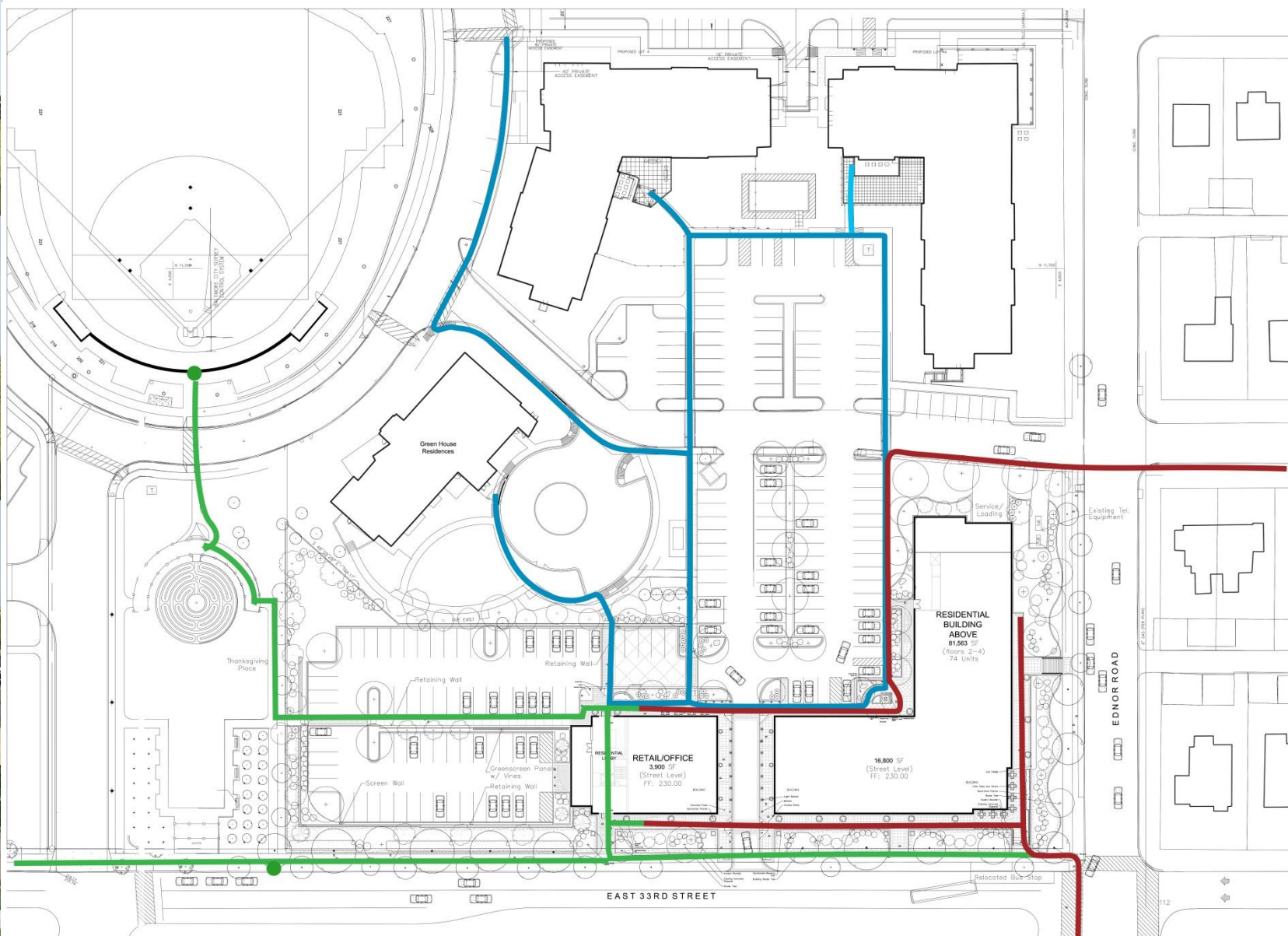
WEST ELEVATION - PREVIOUS





WEST ELEVATION - CURRENT





# PEDESTRIAN DIAGRAMS

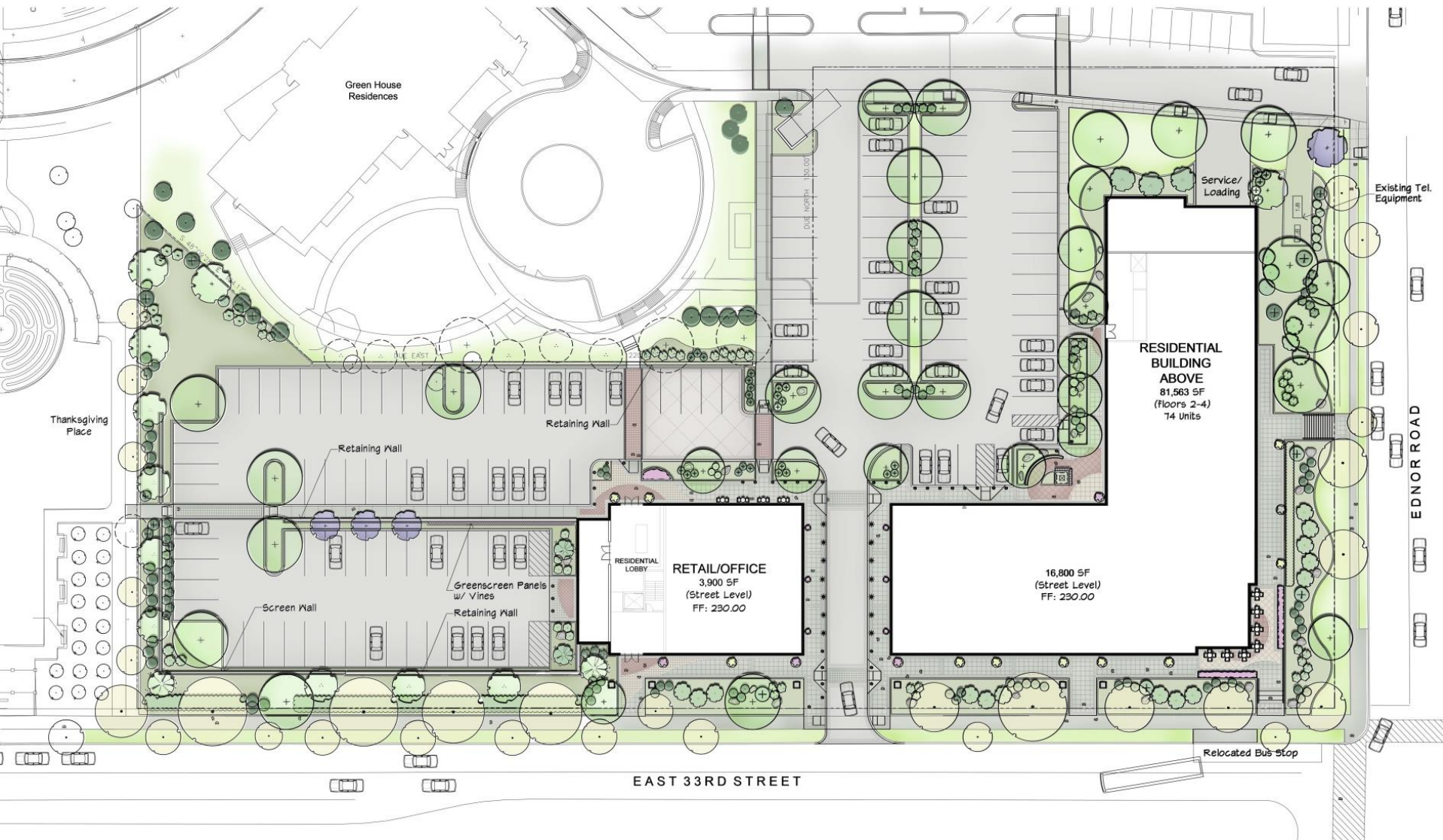






SITE PLAN - PREVIOUS



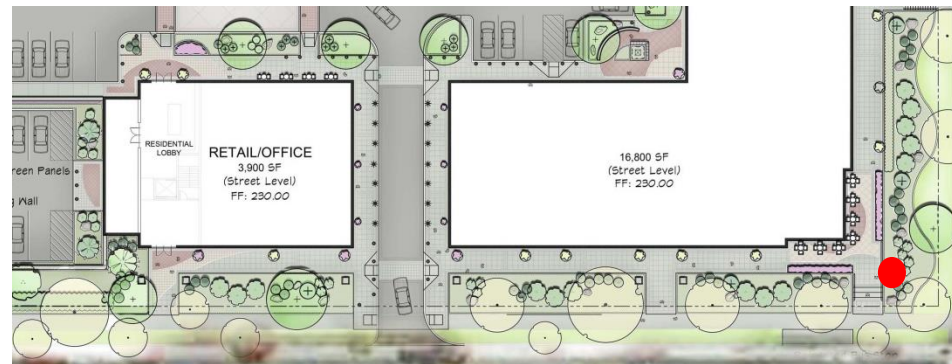
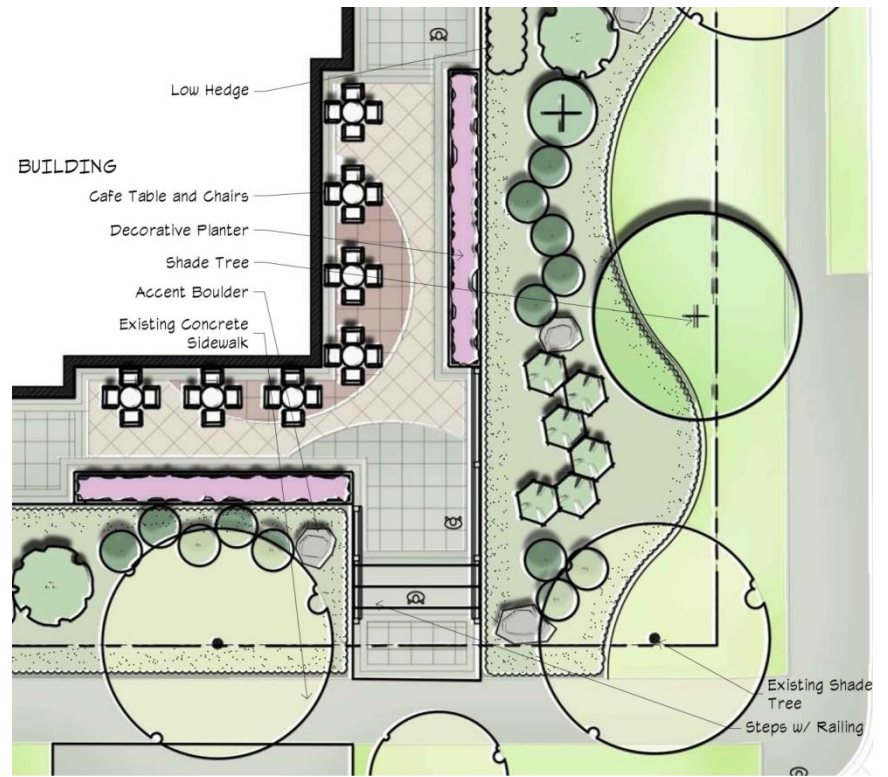


SITE PLAN - CURRENT

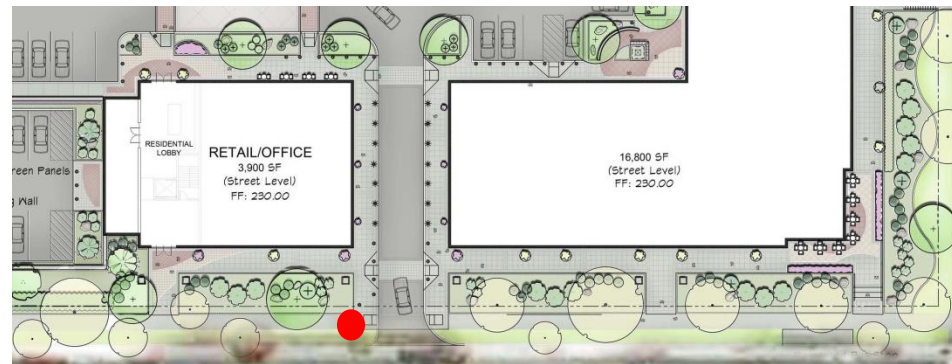
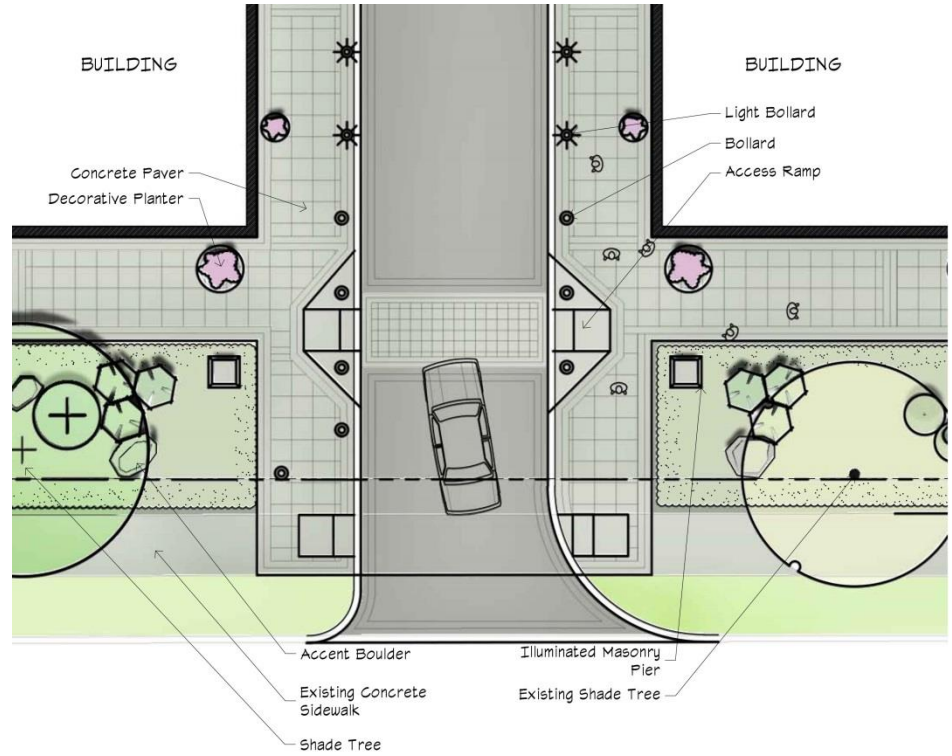


MARKS, THOMAS ARCHITECTS



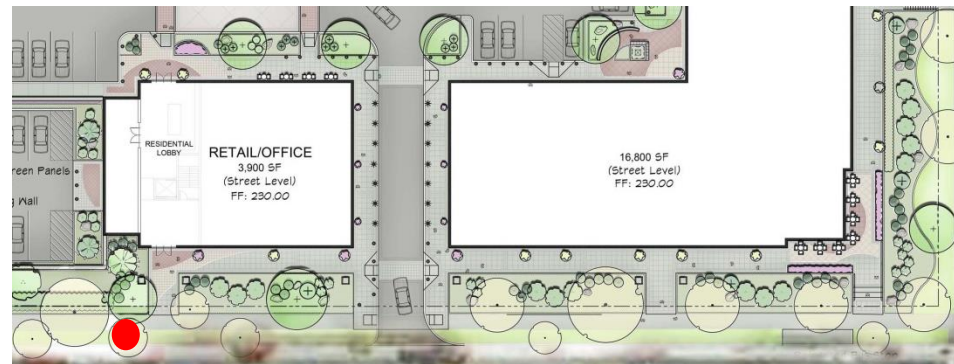
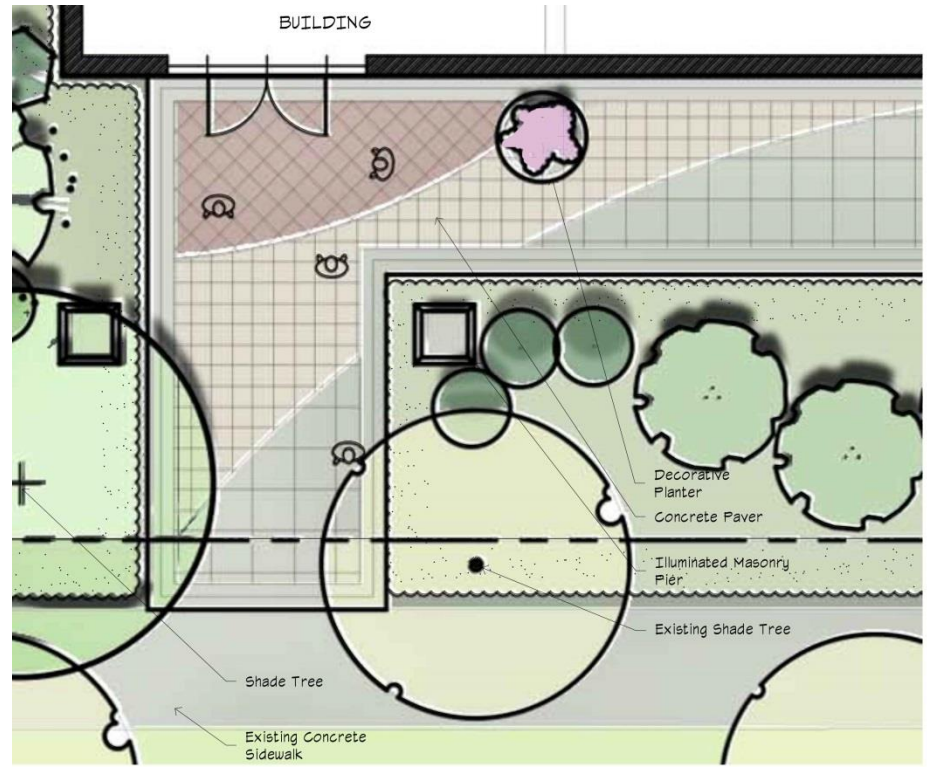


CORNER RESTAURANT

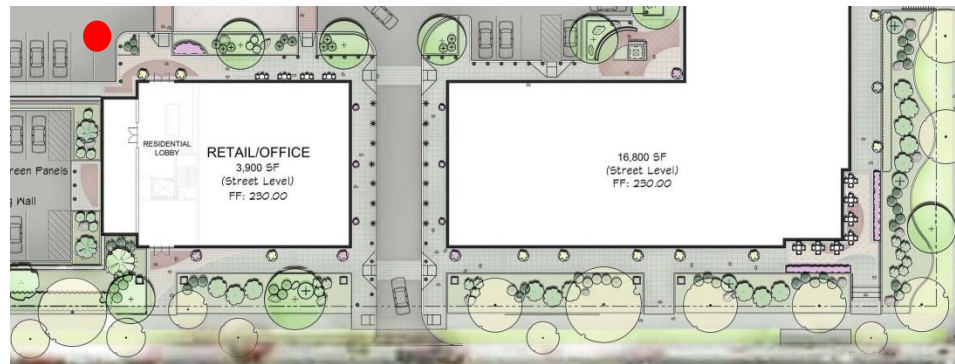


SHOPS

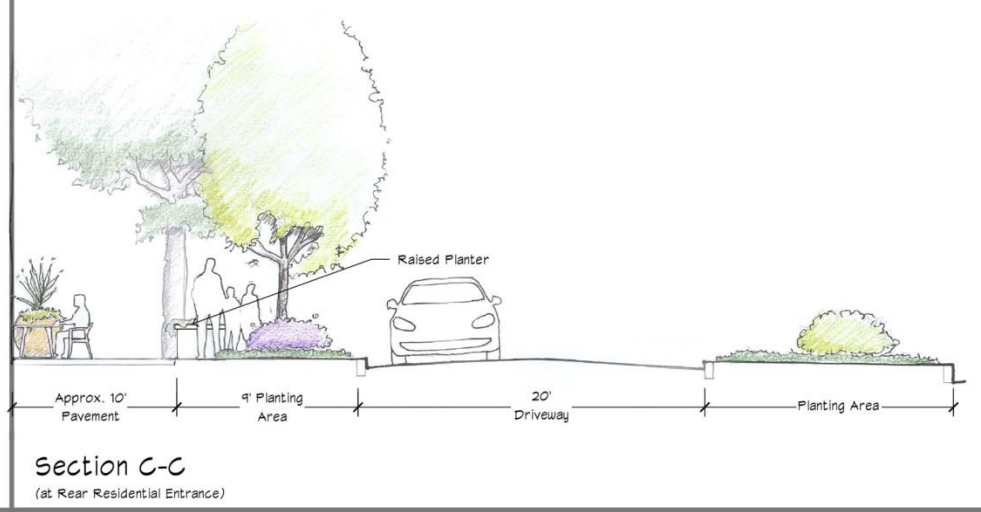
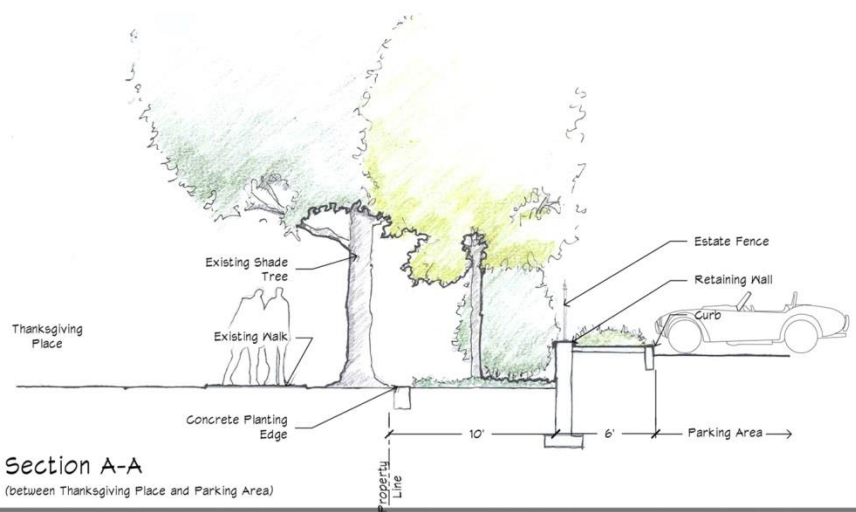
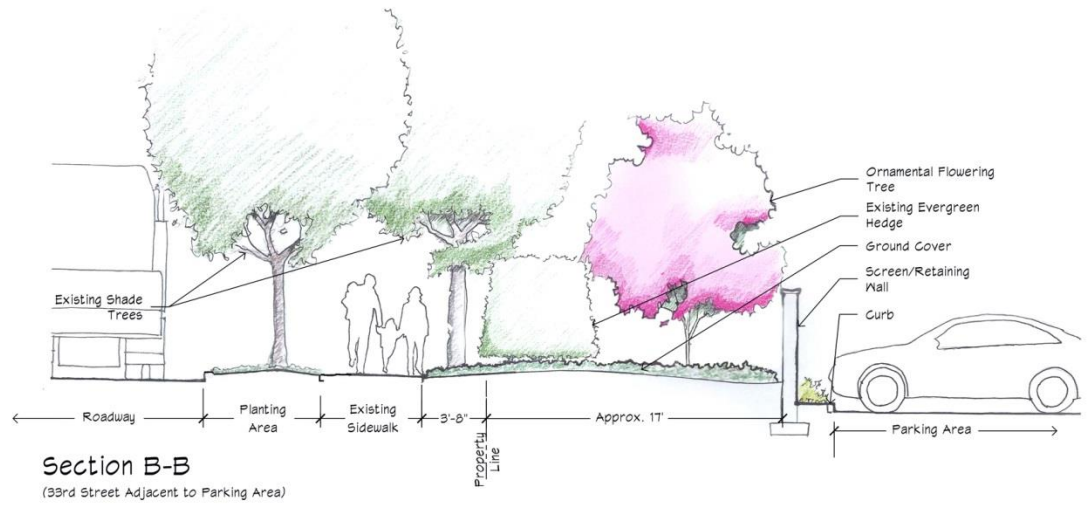


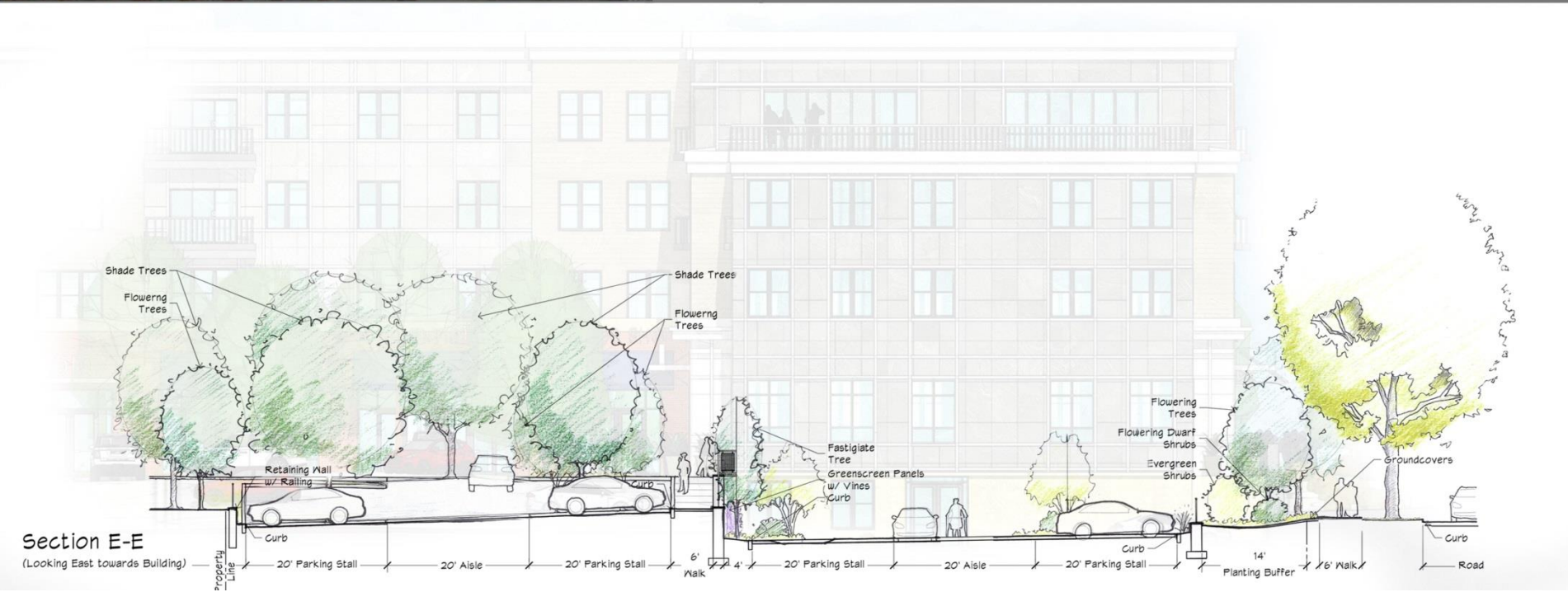
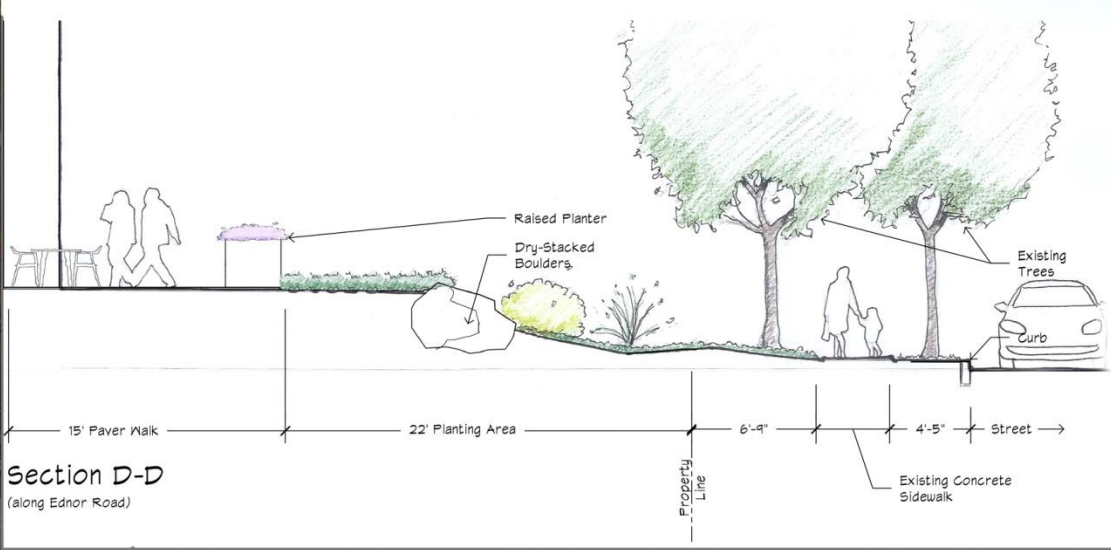


RESIDENTIAL ENTRANCE (33 RD. STREET)



RESIDENTIAL ENTRANCE (FROM NORTH)









EXISTING HEDGE TO REMAIN ON 33<sup>RD</sup> STREET



MARKS, THOMAS ARCHITECTS



# VILLAGE CENTER AT STADIUM PLACE



MARKS, THOMAS ARCHITECTS

