

BALTIMORE CITY PUBLIC SCHOOLS  
21ST CENTURY SCHOOL BUILDINGS PROGRAM  
MARYLAND STADIUM AUTHORITY



# HIGHLANDTOWN ELEMENTARY / MIDDLE SCHOOL

UDAAP PRESENTATION

CONCEPT DESIGN

23 JULY 2020



**JRS ARCHITECTS**

2010 Clipper Park Road, Suite 101, Baltimore MD 21211 410.235.7250 [astro@jrsarchitects.com](mailto:astro@jrsarchitects.com)

## PROJECT TEAM

---

**OWNERS** MARYLAND STADIUM AUTHORITY  
BALTIMORE CITY PUBLIC SCHOOLS  
21ST CENTURY SCHOOL BUILDINGS PROGRAM

**ARCHITECT** JRS ARCHITECTS, INC  
2010 CLIPPER PARK RD, SUITE 101  
BALTIMORE, MD 21211

**LANDSCAPE / CIVIL** CARROLL ENGINEERING, INC  
215 SCHILLING CIRCLE, SUITE 102  
HUNT VALLEY, MD 21031



## PROJECT SCHEDULE

---

APRIL 2020 - NOTICE TO PROCEED

MAY 2020 - DESIGN START

MARCH 2021 - DESIGN COMPLETION

TBD - CONSTRUCTION START GMP 1

MAY 2021 - CONSTRUCTION START GMP 2

JULY 2022 - CONSTRUCTION COMPLETION

AUGUST 2022 - OCCUPANCY

PROJECT DESCRIPTION

PROJECT SCOPE

ADDITION TO SCHOOL #237 HIGHLANDTOWN PK-8

EXISTING BUILDING AREA: 80,422 SF  
PROPOSED ADDITION AREA: 43,711 SF  
NEW TOTAL BUILDING AREA: 118,203 SF

LEED ASPIRATION: SILVER

COMMUNITY MEETING DATES: JULY 8, 2020



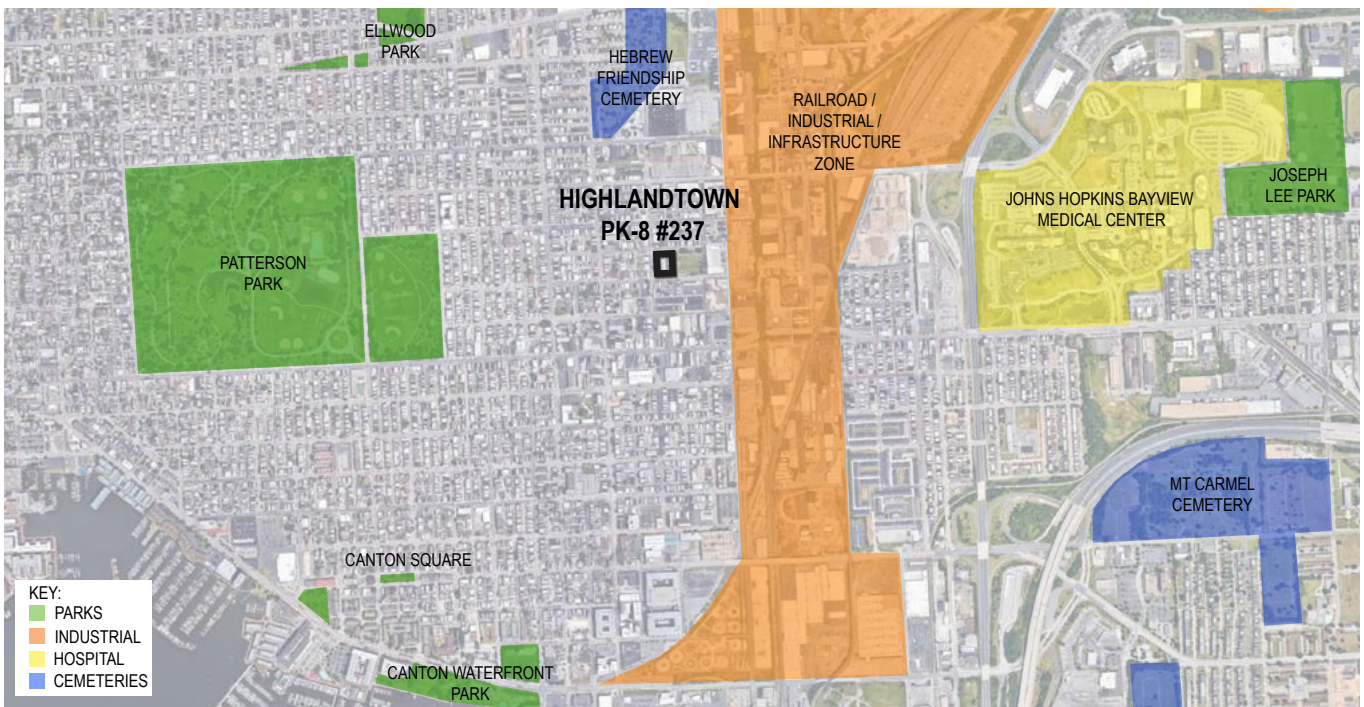
SITE CONTEXT

LOCATION



SITE CONTEXT

ADJACENT USES



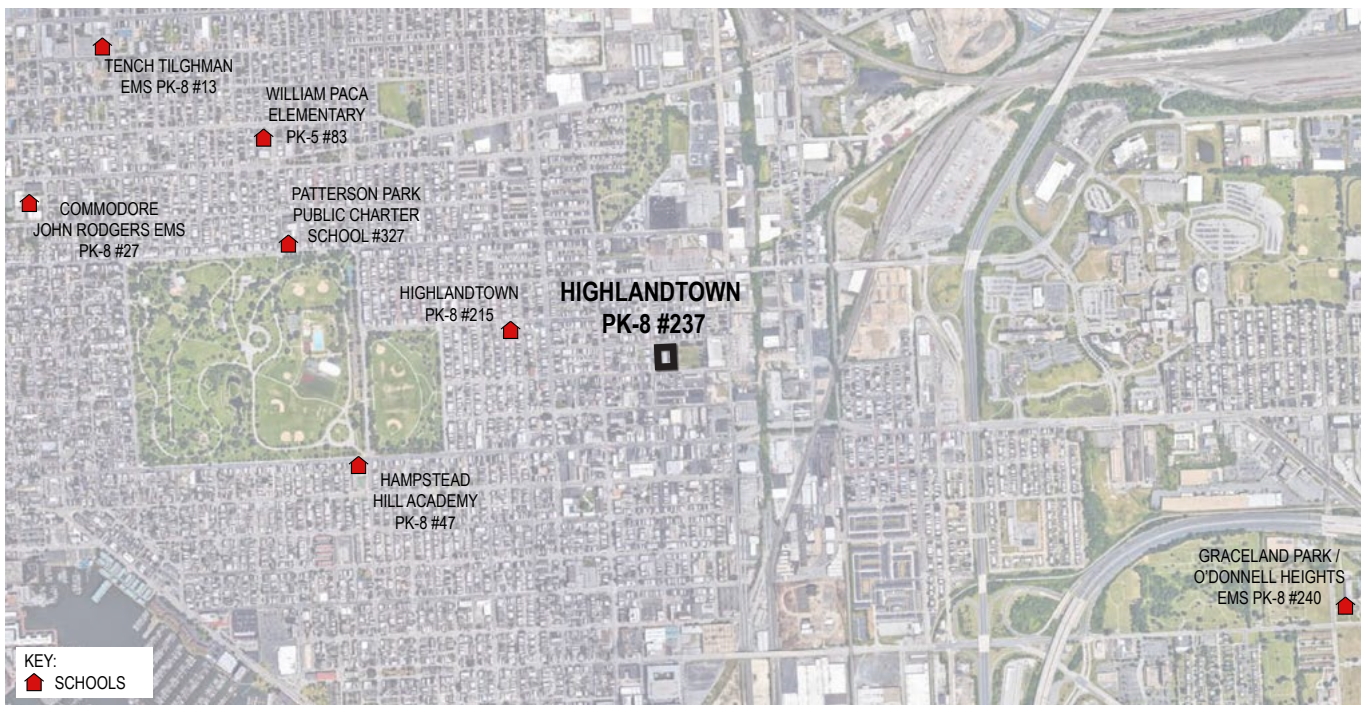
SITE CONTEXT

NEIGHBORHOODS



SITE CONTEXT

SURROUNDING SCHOOLS

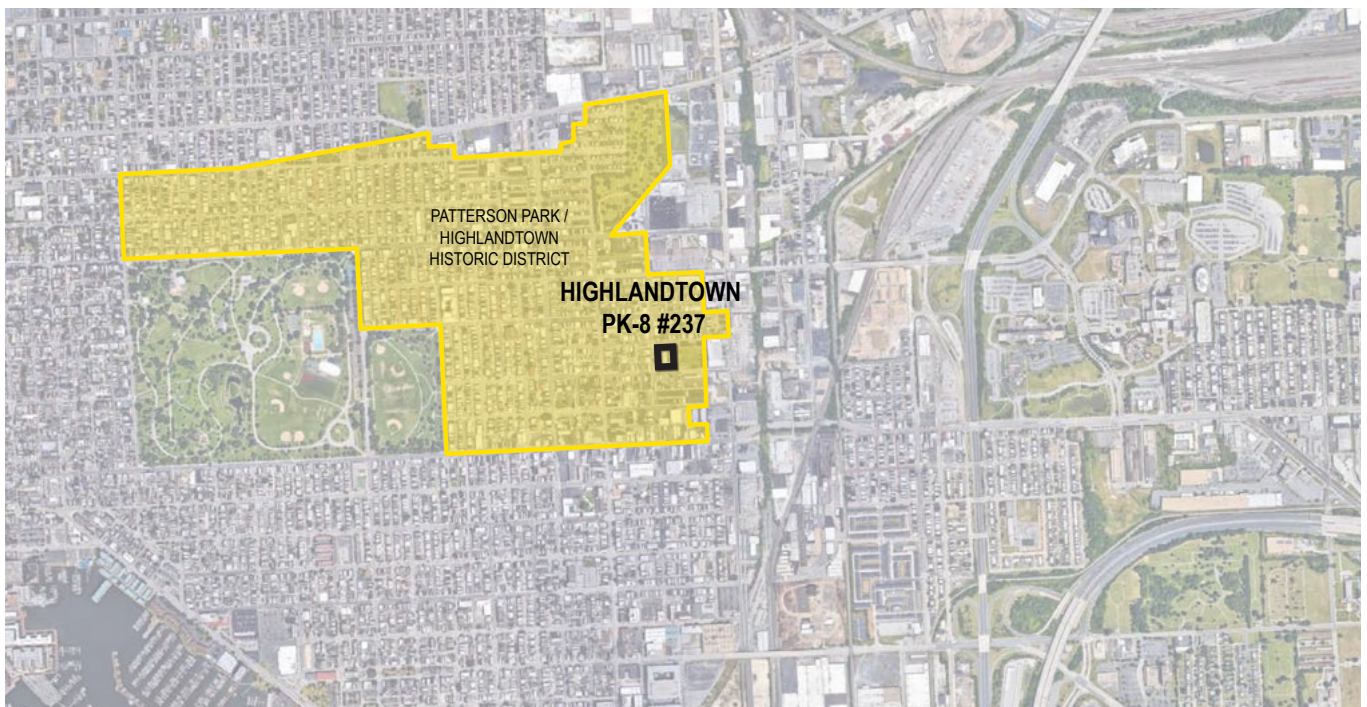


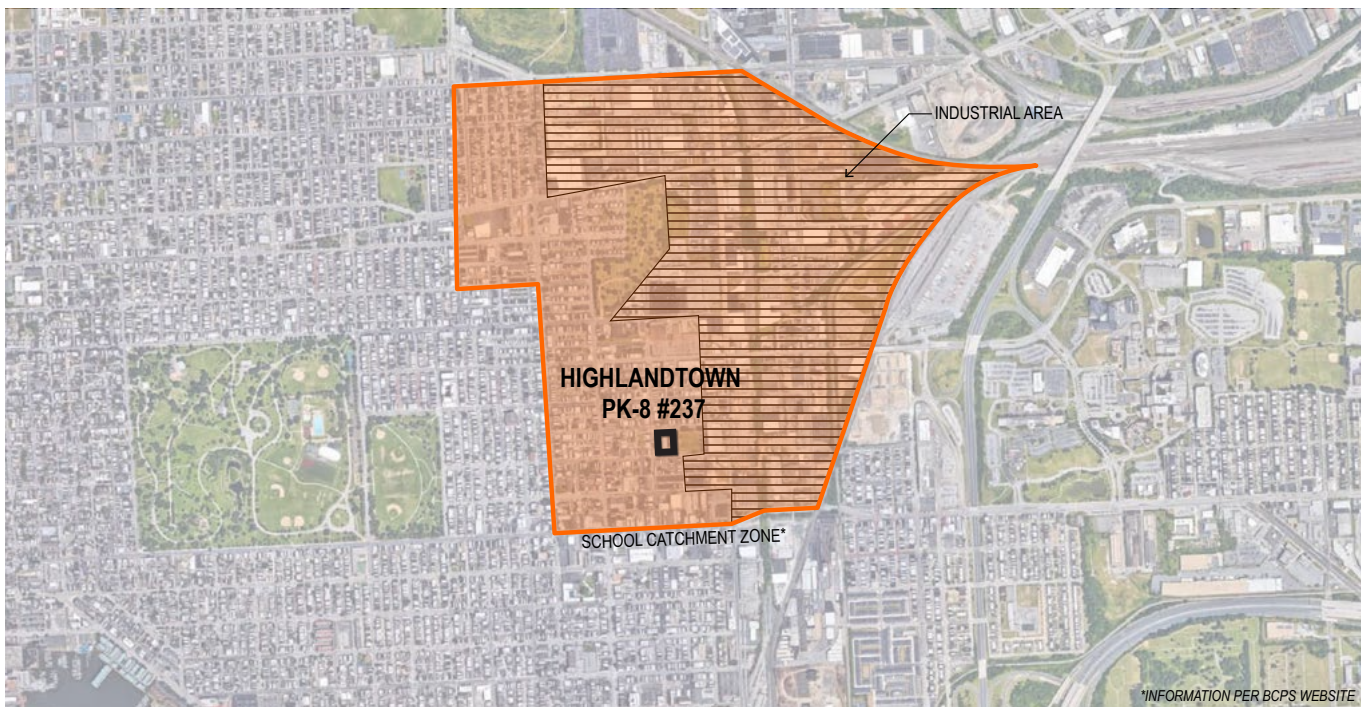
BALTIMORE CITY PUBLIC SCHOOLS  
MARYLAND STADIUM AUTHORITY  
21ST CENTURY SCHOOL BUILDINGS PROGRAM



HIGHLANDTOWN ELEMENTARY / MIDDLE SCHOOL  
UDAAP PRESENTATION | CONCEPT DESIGN  
23 JULY 2020









SITE CONTEXT

SITE ACCESS - FOOT PATHS



SITE CONTEXT

EXISTING SITE ANALYSIS



SITE CONTEXT

EXISTING - SITE & NEIGHBORHOOD



SITE CONTEXT

EXISTING - SITE & NEIGHBORHOOD



EXISTING BUILDING

1926 HISTORIC BUILDING





EXISTING BUILDING

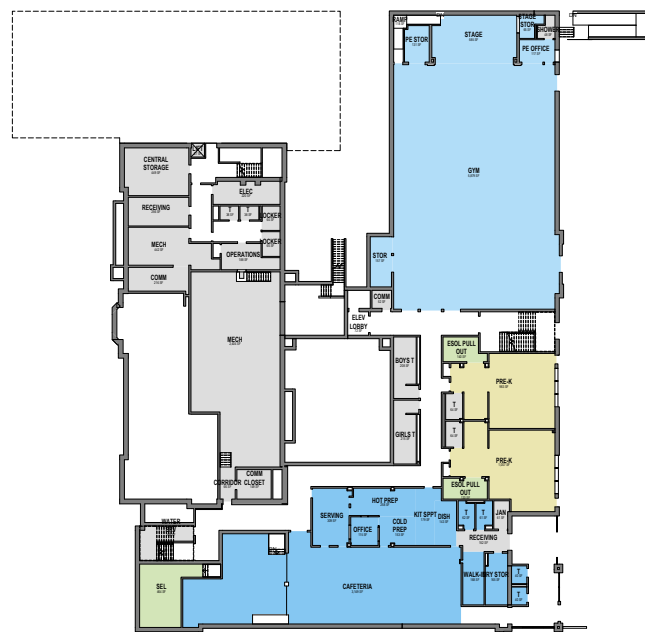
2007 BUILDING ADDITION & ANNEX





EXISTING

FLOOR PLAN - GROUND FLOOR



- PROGRAM COLOR CODE:
- Administration
  - Health Suite
  - Guidance
  - Support Services
  - Teaching & Learning
  - Support / Collaborative
  - Special Education
  - Sciences
  - Visual Arts
  - Music
  - Specials
  - Technology Education
  - Physical Education
  - Media
  - Food Services
  - Building Services
  - Flex



EXISTING

FLOOR PLAN - FIRST FLOOR



- PROGRAM COLOR CODE:
- Administration
  - Health Suite
  - Guidance
  - Support Services
  - Teaching & Learning
  - Support / Collaborative
  - Special Education
  - Sciences
  - Visual Arts
  - Music
  - Specials
  - Technology Education
  - Physical Education
  - Food Services
  - Building Services
  - Flex

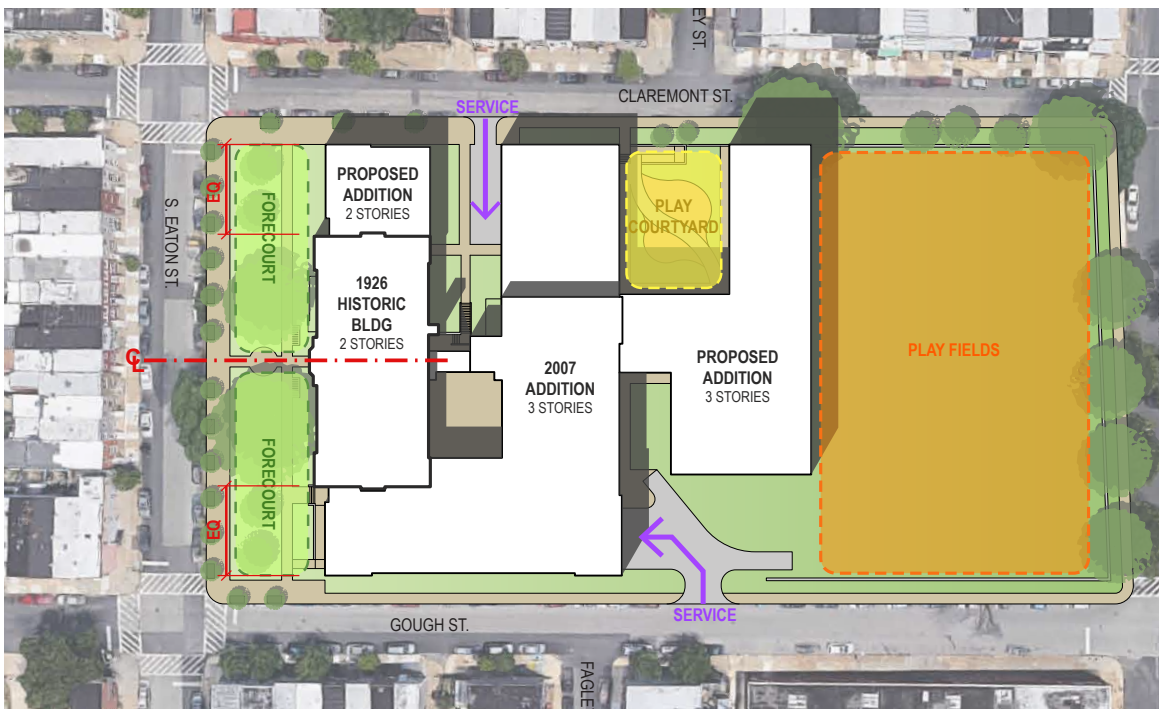






CONCEPT

CONCEPT DIAGRAM



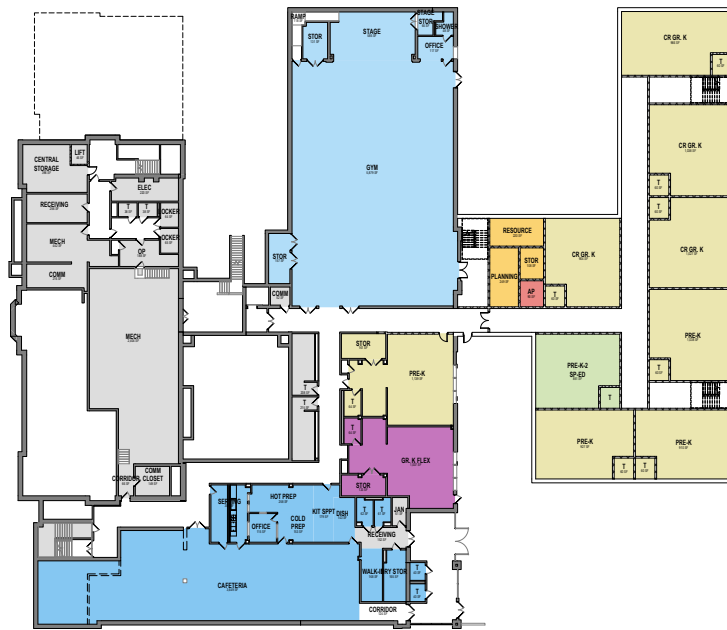
1. NORTHWEST ADDITION SETS BACK FROM THE STREET TO EXTEND THE GREEN PLAZA IN THE FRONT.
2. THE MASSING BALANCES THE FORMAL SYMMETRY OF THE HISTORIC BUILDING.
3. THE EAST ADDITION ADDS TO DEFINING THE STREET EDGE CONSISTENT WITH RESIDENTIAL NEIGHBORHOOD.
4. SMALL COURTYARDS ARE FORMED TO ALLOW FOR ACTIVITY AND DAYLIGHT TO NEW CLASSROOMS.
5. THE FOOTPRINT IS MINIMIZED TO MAXIMIZE THE OPEN PLAY FIELD.
6. CURRENT SERVICE ACCESS IS MAINTAINED.





CONCEPT

FLOOR PLAN - GROUND FLOOR



**KEY:**  
 REAR ADDITION AREA: 39,105 SQFT  
 FRONT ADDITION AREA: 5,455 SQFT  
 TOTAL AREA OF ADDITION: 44,560 SQFT

- PROGRAM COLOR CODE:**
- Administration
  - Health Suite
  - Guidance
  - Support Services
  - Teaching & Learning
  - Support / Collaborative
  - Special Education
  - Sciences
  - Visual Arts
  - Music
  - Specials
  - Technology Education
  - Physical Education
  - Media
  - Food Services
  - Building Services
  - Flex



CONCEPT

FLOOR PLAN - FIRST FLOOR



**KEY:**  
 REAR ADDITION AREA: 39,105 SQFT  
 FRONT ADDITION AREA: 5,455 SQFT  
 TOTAL AREA OF ADDITION: 44,560 SQFT

- PROGRAM COLOR CODE:**
- Administration
  - Health Suite
  - Guidance
  - Support Services
  - Teaching & Learning
  - Support / Collaborative
  - Special Education
  - Sciences
  - Visual Arts
  - Music
  - Specials
  - Technology Education
  - Physical Education
  - Media
  - Food Services
  - Building Services
  - Flex



CONCEPT

FLOOR PLAN - SECOND FLOOR



**KEY:**  
 REAR ADDITION AREA: 39,105 SQFT  
 FRONT ADDITION AREA: 5,455 SQFT  
 TOTAL AREA OF ADDITION: 44,560 SQFT

- PROGRAM COLOR CODE:**
- Administration
  - Health Suite
  - Guidance
  - Support Services
  - Teaching & Learning
  - Support / Collaborative
  - Special Education
  - Sciences
  - Visual Arts
  - Music
  - Specials
  - Technology Education
  - Physical Education
  - Media
  - Food Services
  - Building Services
  - Flex



EXISTING

DETAIL - FRONT AERIAL



EXISTING

DETAIL - FRONT AERIAL

































---

# THANK YOU

---

BALTIMORE CITY PUBLIC SCHOOLS  
MARYLAND STADIUM AUTHORITY  
21ST CENTURY SCHOOL BUILDINGS PROGRAM



HIGHLANDTOWN ELEMENTARY / MIDDLE SCHOOL  
UDAAP PRESENTATION | CONCEPT DESIGN  
23 JULY 2020

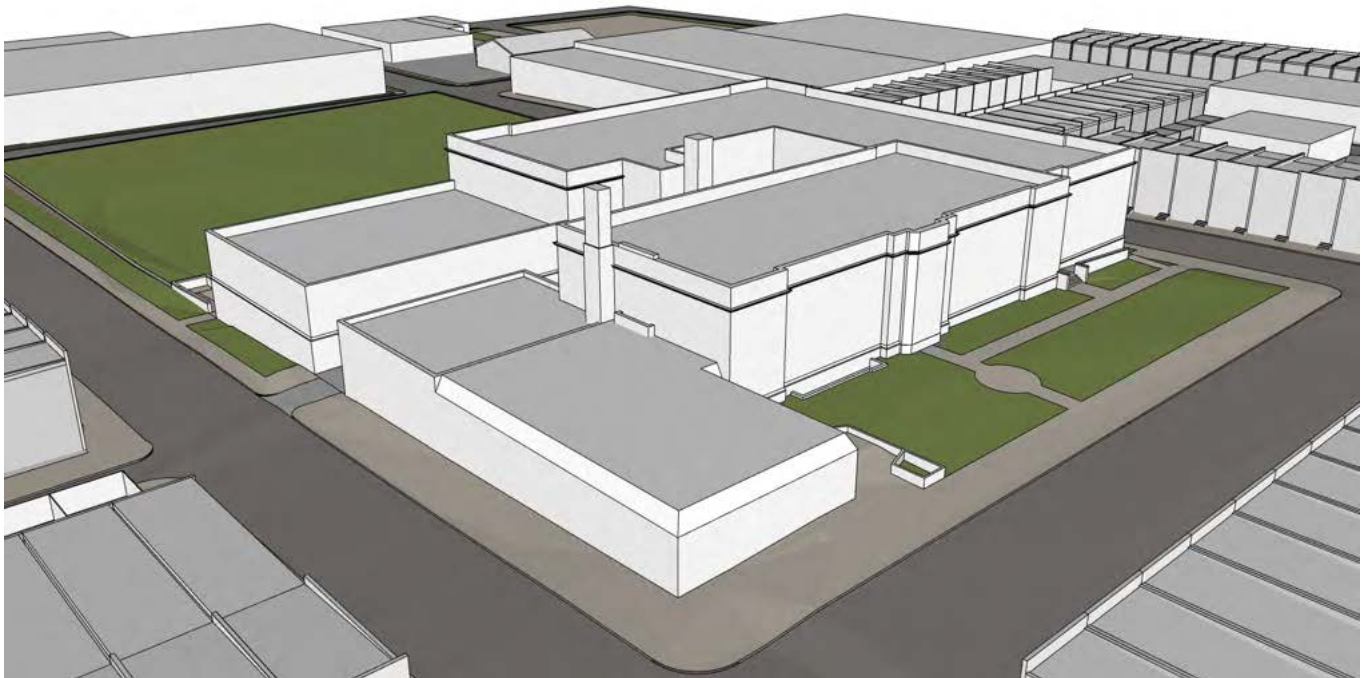
43

**JRS ARCHITECTS**

2010 Clipper Park Road, Suite 101, Baltimore MD 21211 410.235.7250 [acastro@jrsohitects.com](mailto:acastro@jrsohitects.com)

EXISTING

MASSING - FRONT AERIAL





EXISTING

MASSING - REAR AERIAL













